

TEXOMA FIVE DEPARTURE

DALLAS, TEXAS

LONE STAR DEP CON
125.2 343.65
ATIS
126.35
CLNC DEL
118.625
GND CON
119.475
EXECUTIVE TOWER ★
127.25 (CTAF)

**TOP ALTITUDE:
ASSIGNED BY ATC**

TULSA
114.4 TUL :...:
Chan 91

RADAR and DME required.

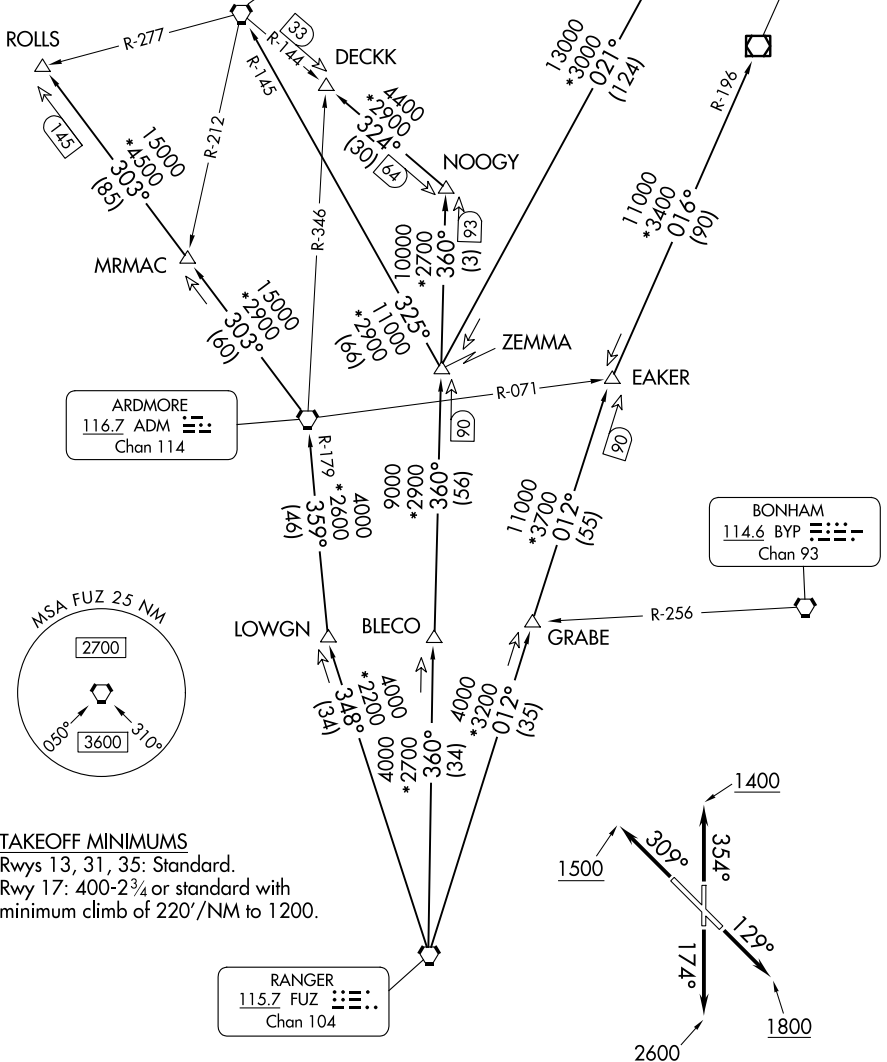
WILL ROGERS
114.1 IRW :...:
Chan 88

OKMULGEE
114.9 OKM :...:
Chan 96

ARDMORE
116.7 ADM :...:
Chan 114

BONHAM
114.6 BYP :...:
Chan 93

RANGER
115.7 FUZ :...:
Chan 104



SC-2, 11 JUN 2026 to 09 JUL 2026

SC-2, 11 JUN 2026 to 09 JUL 2026

NOTE: Chart not to scale.

(CONTINUED ON FOLLOWING PAGE)

TEXOMA FIVE DEPARTURE

TEXOMA FIVE DEPARTURE



DEPARTURE ROUTE DESCRIPTION

- TAKEOFF RUNWAY 13: Climb on heading 129° to 1800 before turning westbound.
- TAKEOFF RUNWAY 17: Climb on heading 174° to 2600 before turning westbound.
- TAKEOFF RUNWAY 31: Climb on heading 309° to 1500 before turning southbound.
- TAKEOFF RUNWAY 35: Climb on heading 354° to 1400 before turning southbound.

When entering controlled airspace, fly assigned heading for RADAR vectors to appropriate route. Maintain ATC assigned altitude.

ARDMORE TRANSITION (TEX5.ADM): From over FUZ VORTAC on FUZ R-348 to LOWGN, then on ADM R-179 to ADM VORTAC.

BLECO TRANSITION (TEX5.BLECO): From over FUZ VORTAC on FUZ R-360 to BLECO.

DECKK TRANSITION (TEX5.DECKK): From over FUZ VORTAC on FUZ R-360 to NOOGY, then on IRW R-144 to DECKK.

EAKER TRANSITION (TEX5.EAKER): From over FUZ VORTAC on FUZ R-012 to EAKER.

GRABE TRANSITION (TEX5.GRABE): From over FUZ VORTAC on FUZ R-012 to GRABE.

OKMULGEE TRANSITION (TEX5.OKM): From over FUZ VORTAC on FUZ R-012 to EAKER, then on OKM R-196 to OKM VOR/DME.

ROLLS TRANSITION (TEX5.ROLLS): From over FUZ VORTAC on FUZ R-348 to LOWGN, then on ADM R-179 to ADM VORTAC, then on ADM R-303 to ROLLS.

TULSA TRANSITION (TEX5.TUL): From over FUZ VORTAC on FUZ R-360 to ZEMMA, then on TUL R-201 to TUL VORTAC.

WILL ROGERS TRANSITION (TEX5.IRW): From over FUZ VORTAC on FUZ R-360 to ZEMMA, then on IRW R-145 to IRW VORTAC.

ZEMMA TRANSITION (TEX5.ZEMMA): From over FUZ VORTAC on FUZ R-360 to ZEMMA.

NOTE: BLECO Transition: ATC assigned.

NOTE: DECKK Transition: For all aircraft inbound to the Oklahoma City area.

NOTE: EAKER Transition: For aircraft inbound to the Tulsa terminal area.

NOTE: GRABE Transition: ATC assigned.

NOTE: OKMULGEE Transition: For all aircraft overflying OKM VOR/DME proceeding on J181 to BDF to destinations in the Chicago terminal area and north.

NOTE: TULSA Transition: For all aircraft overflying TUL VORTAC.

NOTE: WILL ROGERS Transition: For all aircraft overflying IRW VORTAC.

SC-2, 11 JUN 2026 to 09 JUL 2026

SC-2, 11 JUN 2026 to 09 JUL 2026

TEXOMA FIVE DEPARTURE