

(AGERS1.AGERS) 22139

AL-744 (FAA)

FORT LAUDERDALE/HOLLYWOOD INTL (FLL)

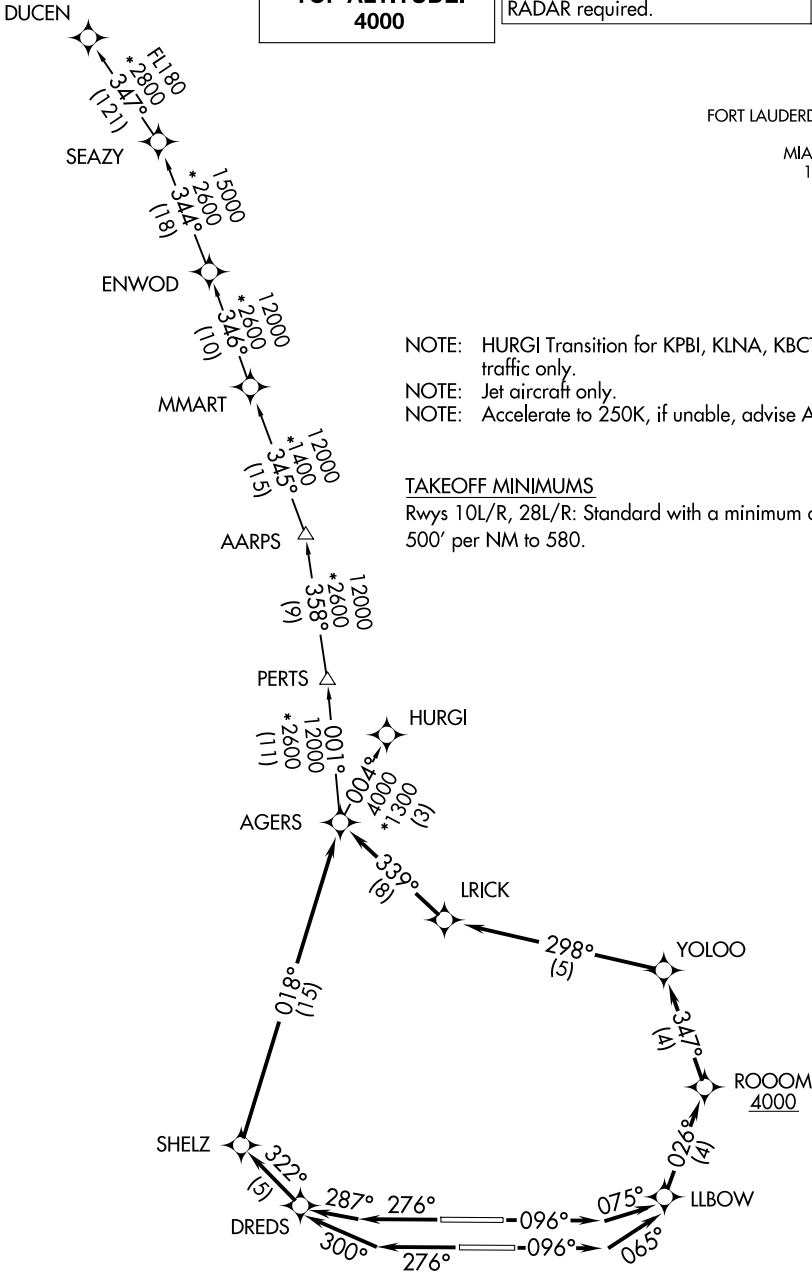
AGERS ONE DEPARTURE (RNAV)

FORT LAUDERDALE, FLORIDA

**TOP ALTITUDE:
4000**

RNAV 1- DME/DME/IRU or GPS.
RADAR required.

D-ATIS 135.0
CLNC DEL 128.4
CPDLC 121.4
GND CON 121.4
FORT LAUDERDALE TOWER 119.3 257.8
MIAMI DEP CON 126.05 251.1



NOTE: HURGI Transition for KPBI, KLNA, KBCT landing traffic only.
NOTE: Jet aircraft only.
NOTE: Accelerate to 250K, if unable, advise ATC.

(NARRATIVE ON FOLLOWING PAGE)

NOTE: Chart not to scale.

AGERS ONE DEPARTURE (RNAV) (AGERS1.AGERS) 19MAY22

FORT LAUDERDALE, FLORIDA
FORT LAUDERDALE/HOLLYWOOD INTL (FLL)

SE-3, 11 JUN 2026 to 09 JUL 2026

SE-3, 11 JUN 2026 to 09 JUL 2026



DEPARTURE ROUTE DESCRIPTION

TAKEOFF RUNWAY 10L: Climb on heading 096° to intercept course 075° to LLBOW, then on track 026° to cross ROOOM at or above 4000, then on depicted route to AGERS, thence. . .

TAKEOFF RUNWAY 10R: Climb on heading 096° to intercept course 065° to LLBOW, then on track 026° to cross ROOOM at or above 4000, then on depicted route to AGERS, thence. . .

TAKEOFF RUNWAY 28L: Climb on heading 276° to intercept course 300° to DREDS, then on depicted route to AGERS, thence. . .

TAKEOFF RUNWAY 28R: Climb on heading 276° to intercept course 287° to DREDS, then on depicted route to AGERS, thence. . .

. . .(Transition). Maintain 4000, expect clearance to filed altitude within 10 minutes after departure.

DUCEN TRANSITION (AGERS1 .DUCEN)

HURGI TRANSITION (AGERS1 .HURGI)

SE-3, 11 JUN 2026 to 09 JUL 2026

SE-3, 11 JUN 2026 to 09 JUL 2026