

D-ATIS  
135.0  
CLNC DEL  
128.4  
CPDLC  
GND CON  
121.4  
FORT LAUDERDALE TOWER  
119.3 257.8  
MIAMI DEP CON  
126.05 251.1

**TOP ALTITUDE:  
4000**

RNAV 1 - DME/DME/IRU or GPS.

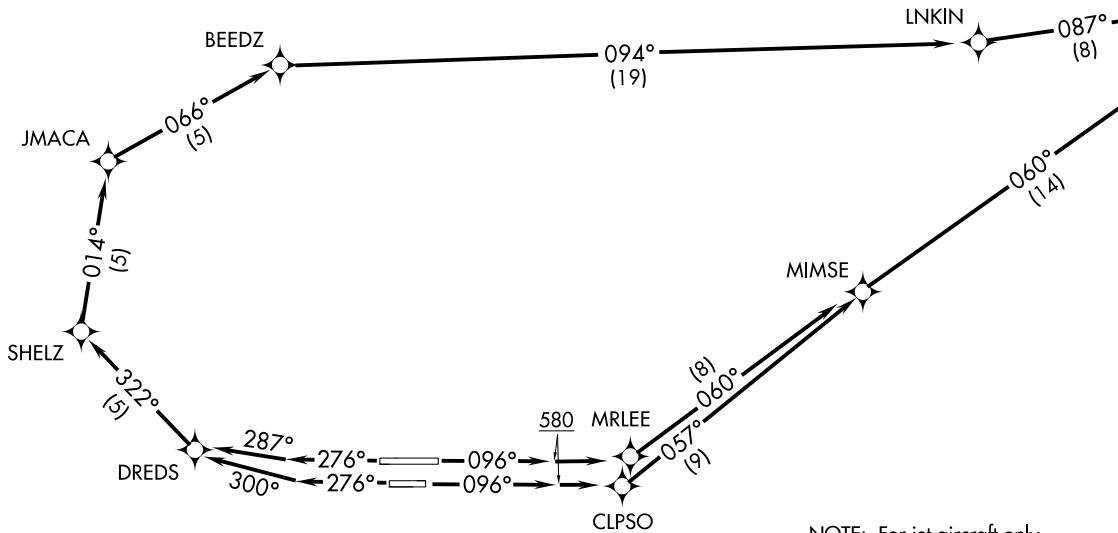
RADAR required.

**TAKEOFF MINIMUMS**

Rwys 10L/R, 28L/R: Standard with minimum  
climb of 500' per NM to 580.

See following  
page for  
transition  
routes.

FEALX  
4000



NOTE: For jet aircraft only.  
NOTE: Accelerate to 250K, if unable, advise ATC.

(CONTINUED ON FOLLOWING PAGE)

NOTE: Chart not to scale.

FEALX TWO DEPARTURE (RNAV) Departure Routes  
FEALX2: FEALX 19MAY22  
FORT LAUDERDALE, FLORIDA  
FORT LAUDERDALE/HOLLYWOOD INTL (FTL)

FEALX2: FEALX 22139  
FEALX TWO DEPARTURE (RNAV) Departure Routes  
AL-714 (FAA)  
FORT LAUDERDALE/HOLLYWOOD INTL (FTL)  
FORT LAUDERDALE, FLORIDA

FEALX TWO DEPARTURE (RNAV) Transition Routes

D-ATIS  
135.0  
CLNC DEL  
128.4  
CPDLC  
GND CON  
121.4  
FORT LAUDERDALE TOWER  
119.3 257.8  
MIAMI DEP CON  
126.05 251.1

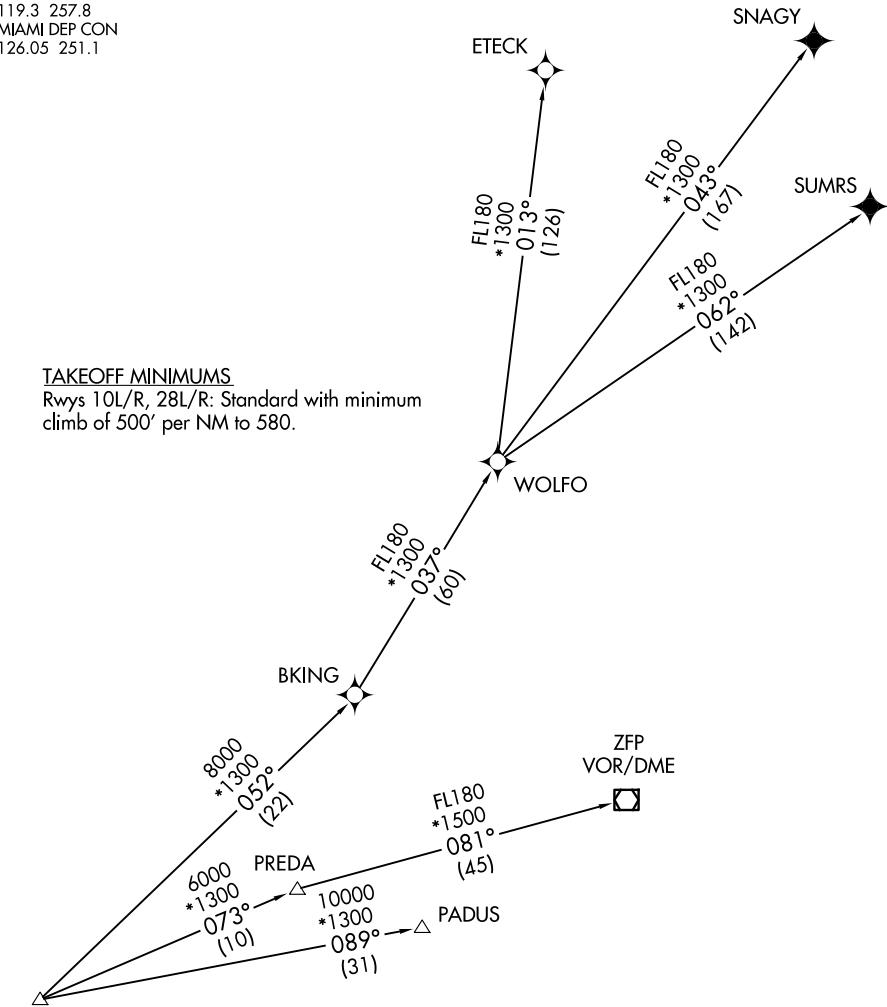
**TOP ALTITUDE:  
4000**

RNAV 1 - DME/DME/IRU or GPS.  
From WOLFO to SNAGY, SUMRS - GPS.

RADAR required.

TAKEOFF MINIMUMS

Rwys 10L/R, 28L/R: Standard with minimum  
climb of 500' per NM to 580.



WOLFO

SNAGY

ETECK

SUMRS

BKING

ZFP  
VOR/DME

PRED

PADUS

FEALX  
4000

NOTE: For jet aircraft only.

NOTE: Accelerate to 250K, if unable, advise ATC.

(NARRATIVE ON FOLLOWING PAGE)

NOTE: Chart not to scale.

SE-3, 11 JUN 2026 to 09 JUL 2026

SE-3, 11 JUN 2026 to 09 JUL 2026

# FEALX TWO DEPARTURE (RNAV)



## DEPARTURE ROUTE DESCRIPTION

SEE ADDITIONAL REQUIREMENTS ON AAUP

TAKEOFF RUNWAY 10L: Climb on heading 096° to 580, then climb direct MRLEE, then on track 060° to MIMSE, then on track 060° to cross FEALX at or above 4000, thence. . .

TAKEOFF RUNWAY 10R: Climb on heading 096° to 580, then climb direct CLPSO, then on track 057° to MIMSE, then on track 060° to cross FEALX at or above 4000, thence. . .

TAKEOFF RUNWAY 28L: Climb on heading 276° to intercept course 300° to DREDS, then on track 322° to SHELZ, then on track 014° to JMACA, then on track 066° to BEEDZ, then on track 094° to LNKIN, then on track 087° to cross FEALX at or above 4000, thence. . .

TAKEOFF RUNWAY 28R: Climb on heading 276° to intercept course 287° to DREDS, then on track 322° to SHELZ, then on track 014° to JMACA, then on track 066° to BEEDZ, then on track 094° to LNKIN, then on track 087° to cross FEALX at or above 4000, thence. . .

. . .(transition). Maintain 4000. Expect clearance to filed altitude ten minutes after departure.

- ETECK TRANSITION (FEALX2.ETECK)
- FREEMPORT TRANSITION (FEALX2.ZFP)
- PADUS TRANSITION (FEALX2.PADUS)
- SNAGY TRANSITION (FEALX2.SNAGY)
- SUMRS TRANSITION (FEALX2.SUMRS)
- WOLFO TRANSITION (FEALX2.WOLFO)

SE-3, 11 JUN 2026 to 09 JUL 2026

SE-3, 11 JUN 2026 to 09 JUL 2026