

GLADZ FOUR DEPARTURE (RNAV) Departure Routes  
FORT LAUDERDALE/HOLLYWOOD INTL (FLL)  
GLADZ4, GLADZ1 31OCT24

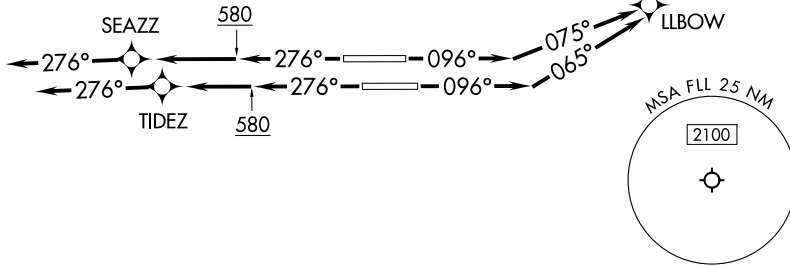
MIAMI DEP CON  
126.05 251.1 (Departing E)  
126.85 290.325 (Departing W)  
D-ATIS  
135.0  
CLNC DEL  
128.4  
CPDLC  
GND CON  
121.4  
FORT LAUDERDALE TOWER  
119.3 257.8

RNAV-1 DME/DME/IRU or GPS.  
RADAR required for NON-GPS equipped aircraft.  
RADAR required.

**TOP ALTITUDE:  
ASSIGNED BY ATC**



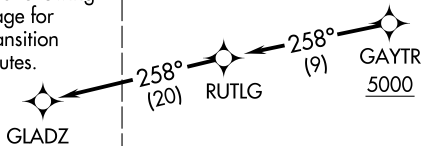
NOTE: Jet aircraft only.  
NOTE: Accelerate to 250K until leaving 10000, if unable, advise ATC.  
NOTE: SHAQQ and BAGGS transitions ATC assigned except aircraft departing MIA.



**TAKEOFF MINIMUMS**

Rwys 10L/R, 28L/R: Standard with minimum climb of 500'/NM to 580.

See following page for transition routes.



(CONTINUED ON FOLLOWING PAGE)

NOTE: Chart not to scale.

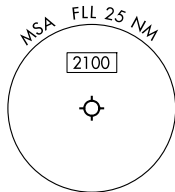
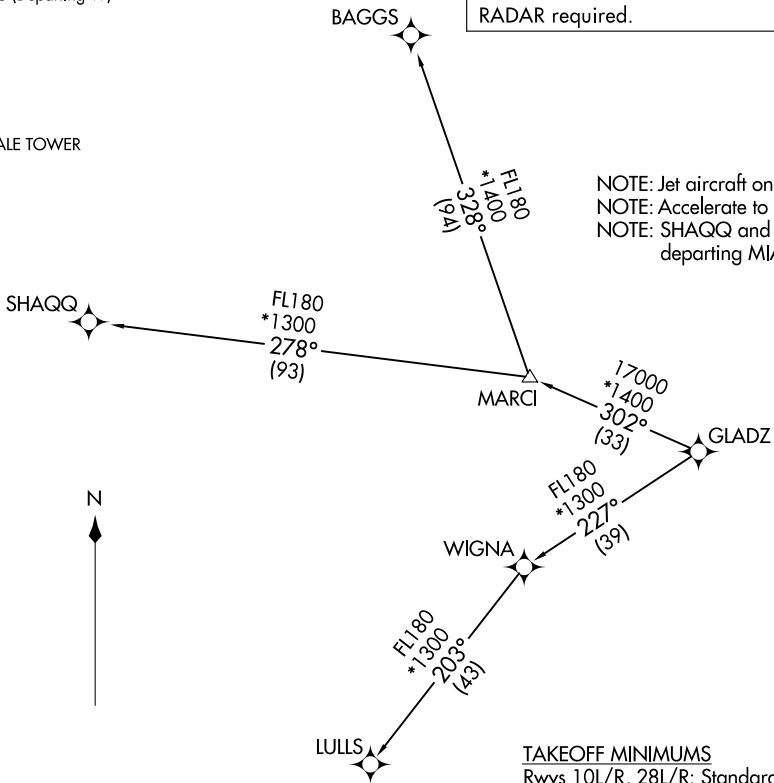
(GLADZ4, GLADZ1) 25331  
AL-744 (FAA)  
FORT LAUDERDALE/HOLLYWOOD INTL (FLL)  
GLADZ FOUR DEPARTURE (RNAV) Departure Routes  
FORT LAUDERDALE, FLORIDA

RNAV-1 DME/DME/IRU or GPS.  
RADAR required for NON-GPS equipped aircraft.  
RADAR required.

**TOP ALTITUDE:  
ASSIGNED BY ATC**

MIAMI DEP CON  
126.05 251.1 (Departing E)  
126.85 290.325 (Departing W)  
D-ATIS  
135.0  
CLNC DEL  
128.4  
CPDLC  
GND CON  
121.4  
FORT LAUDERDALE TOWER  
119.3 257.8

NOTE: Jet aircraft only.  
NOTE: Accelerate to 250K until leaving 10000, if unable, advise ATC.  
NOTE: SHAQQ and BAGGS transitions ATC assigned except aircraft departing MIA.



**TAKEOFF MINIMUMS**  
Rwys 10L/R, 28L/R: Standard with minimum climb of 500'/NM to 580.

(CONTINUED ON FOLLOWING PAGE)

NOTE: Chart not to scale.



GLADZ FOUR DEPARTURE (RNAV) Transition Routes FORT LAUDERDALE, FLORIDA  
(GLADZ4, GLADZ) 31OCT24 FORT LAUDERDALE/HOLLYWOOD INTL (FLL)

(GLADZ4, GLADZ) 25331 AL-744 (FAA) FORT LAUDERDALE/HOLLYWOOD INTL (FLL)  
GLADZ FOUR DEPARTURE (RNAV) Transition Routes FORT LAUDERDALE, FLORIDA



DEPARTURE ROUTE DESCRIPTION

SEE ADDITIONAL REQUIREMENTS ON AAUP

TAKEOFF RUNWAY 10L: Climb on heading 096° to intercept course 075° to LLBOW, then on track 026° to cross ROOOM at or above 4000, then on track 347° to YOLOO, then on track 298° to LRICK, then on heading 276°, for vectors to cross GAYTR at or above 5000, thence. . .

TAKEOFF RUNWAY 10R: Climb on heading 096° to intercept course 065° to LLBOW, then on track 026° to cross ROOOM at or above 4000, then on track 347° to YOLOO, then on track 298° to LRICK, then on heading 276°, for vectors to cross GAYTR at or above 5000, thence. . .

TAKEOFF RUNWAY 28L: Climb on heading 276° to 580, then direct to TIDEZ, then on track 276°, for vectors to cross GAYTR at or above 5000, thence. . .

TAKEOFF RUNWAY 28R: Climb on heading 276° to 580, then direct to SEAZZ, then on track 276°, for vectors to cross GAYTR at or above 5000, thence. . .

. . .on track 258° to RUTLG, then on track 258° to GLADZ, then on transition. Maintain ATC assigned altitude. Expect clearance to filed altitude 10 minutes after departure.

BAGGS TRANSITION (GLADZ4.BAGGS)

LULLS TRANSITION (GLADZ4.LULLS)

SHAQQ TRANSITION (GLADZ4.SHAQQ)

SE-3, 11 JUN 2026 to 09 JUL 2026

SE-3, 11 JUN 2026 to 09 JUL 2026