

LOC/DME I-ADI <b>111.75</b>	APP CRS <b>276°</b>	Rwy Ldg <b>8000</b>
Chan <b>54 (Y)</b>		TDZE <b>65</b>
		Apt Elev <b>65</b>

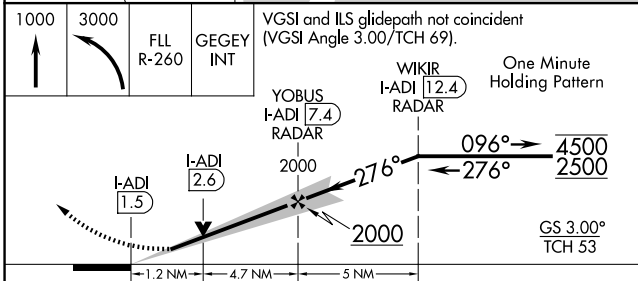
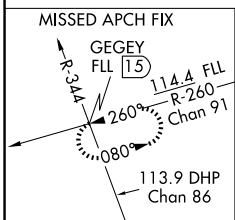
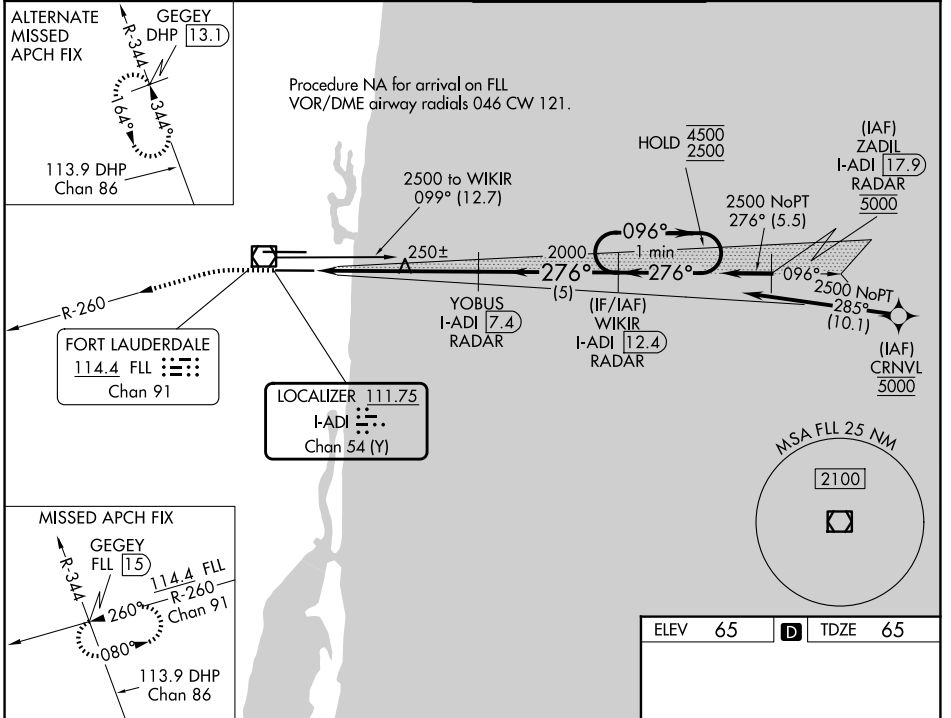
# ILS or LOC RWY 28L

FORT LAUDERDALE/HOLLYWOOD INTL (FLL)

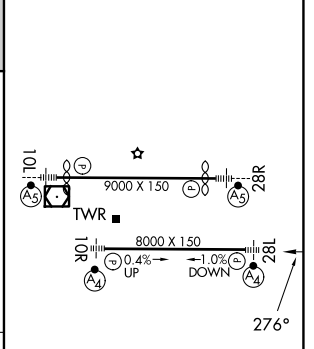
DME or RADAR required. RNP APCH-GPS. From CRNVL. RADAR required for procedure entry at ZADIL.  
 Inop table does not apply to S-ILS-28L. Simultaneous approach authorized.

MALSF  
 MISSED APPROACH: Climb to 1000 then climbing left turn to 3000 on FLL VOR/DME R-260 to GEGEY INT/FLL 15 DME and hold.

D-ATIS <b>135.0</b>	MIAMI APP CON <b>133.775 285.6</b>	FORT LAUDERDALE TOWER <b>119.3 257.8</b>	GND CON <b>121.4</b>
------------------------	---------------------------------------	---	-------------------------



ELEV 65	TDZE 65
---------	---------



CATEGORY	A	B	C	D
S-ILS 28L	265/40		200 (200-¾)	
S-LOC 28L	500/40	435 (500-¾)	500/50	435 (500-1)
CIRCLING	680-1	615 (700-1)	800-2 735 (800-2)	800-2¼ 735 (800-2¼)

HIRL Rwy 10L-28R and 10R-28L					
FAF to MAP 5.9 NM					
Knots	60	90	120	150	180
Min:Sec	5:54	3:56	2:57	2:22	1:58

# ILS or LOC RWY 28L

SE-3, 11 JUN 2026 to 09 JUL 2026

SE-3, 11 JUN 2026 to 09 JUL 2026