

WAAS CH <b>63236</b> <b>W10B</b>	APP CRS <b>096°</b>	Rwy Ldg TDZE Apt Elev	<b>8000</b> <b>14</b> <b>65</b>
--	------------------------	-----------------------------	---------------------------------------

# RNAV (GPS) RWY 10R

FORT LAUDERDALE/HOLLYWOOD INTL (FLL)

RNP APCH-GPS.

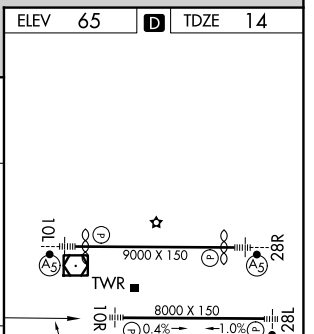
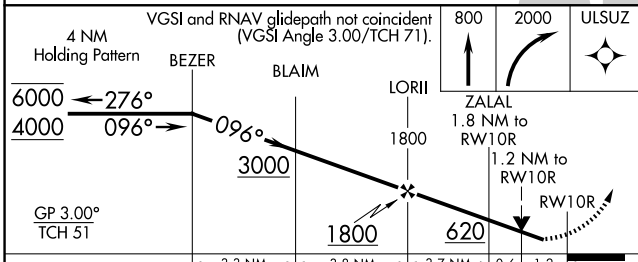
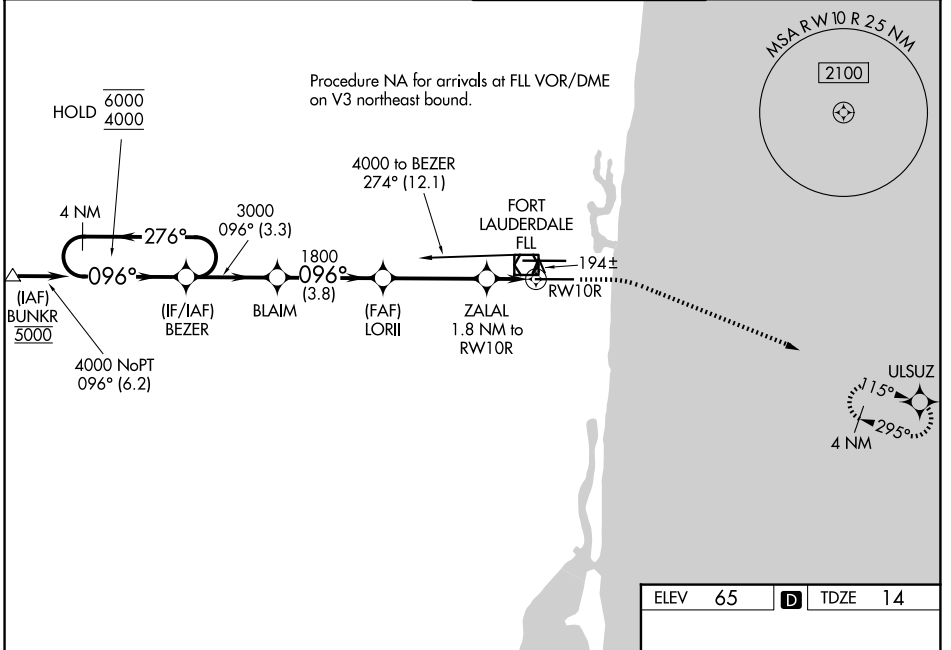
▼ LNAV procedure NA during simultaneous operations. Rwy 10R helicopter visibility reduction below RVR 4000 NA. Inop table does not apply to LPV all Cats. For uncompensated Baro-VNAV systems, LNAV/VNAV NA below 7° C or above 54° C. For inop ALS, increase LNAV Cats C and D visibility to 1½ SM. Use of FD or AP required during simultaneous operations

MALSF

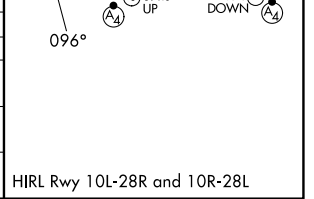
⊕

MISSED APPROACH: Climb to 800 then climbing right turn to 2000 direct ULSUZ and hold.

D-ATIS <b>135.0</b>	MIAMI APP CON <b>133.775 285.6</b>	FORT LAUDERDALE TOWER <b>119.3 257.8</b>	GND CON <b>121.4</b>
------------------------	---------------------------------------	---	-------------------------



CATEGORY	A	B	C	D
LPV DA	264/40		250 (200-¾)	
LNAV/VNAV DA	355/40		341 (300-¾)	
LNAV MDA	460/40	446 (400-¾)	460/55	446 (400-1)
CIRCLING	680-1	615 (700-1)	800-2 735 (800-2)	800-2¼ 735 (800-2¼)



SE-3, 11 JUN 2026 to 09 JUL 2026

SE-3, 11 JUN 2026 to 09 JUL 2026