

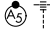
# RNAV (RNP) Z RWY 28R

FORT LAUDERDALE/HOLLYWOOD INTL (FLL)

APP CRS <b>276°</b>	Rwy Ldg <b>8394</b>
	TDZE <b>7</b>
	Apt Elev <b>65</b>

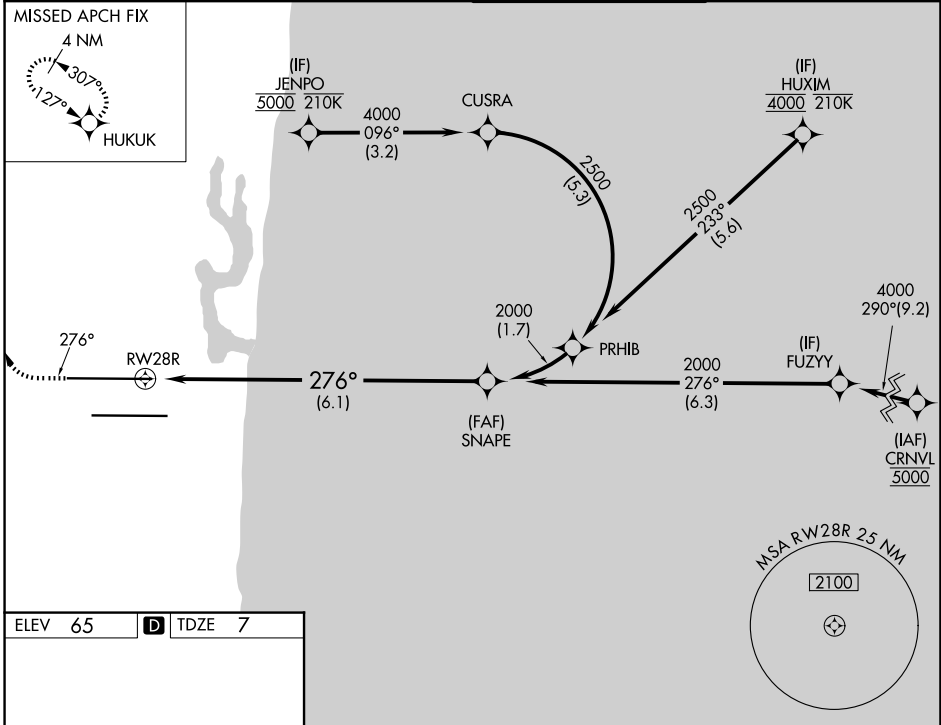
RNP AR APCH - GPS. RADAR required.

Simultaneous approach authorized. For uncompensated Baro-VNAV systems, procedure NA below 7°C or above 54°C. For inop ALS, increase RNP 0.15 visibility to RVR 5500 and increase RNP 0.30 visibility to 1¾ SM.

MALSR 

MISSED APPROACH: Climb to 800 then climbing right turn to 4000 direct HUKUK and hold, continue climb-in-hold to 4000.

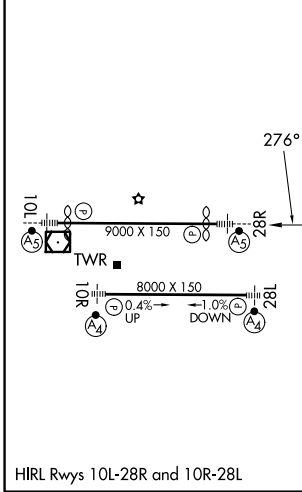
D-ATIS <b>135.0</b>	MIAMI APP CON <b>133.775 285.6</b>	FORT LAUDERDALE TOWER <b>119.3 257.8</b>	GND CON <b>121.4</b>
------------------------	---------------------------------------	---	-------------------------



SE-3, 11 JUN 2026 to 09 JUL 2026

SE-3, 11 JUN 2026 to 09 JUL 2026

ELEV 65	<b>D</b>	TDZE 7
---------	----------	--------



800 4000 HUKUK VGSI and RNAV glidepath not coincident (VGSI Angle 3.00/TCH 69).

See planview for multiple IF locations.

SNAPE 2000

RWY 28R 276° 2000

GP 3.00° TCH 49

	6.1 NM		
CATEGORY	A	B	C
RNP 0.15 DA		362/40	355 (300-¾)
RNP 0.30 DA		618-1⅓	611 (600-1⅓)

## AUTHORIZATION REQUIRED