


WAAS CH 48902 W10A	APP CRS 096°	Rwy Ldg TDZE Apt Elev	8424 7 65
--	------------------------	-----------------------------	--------------------------------------

RNAV (GPS) Z RWY 10L

FORT LAUDERDALE/HOLLYWOOD INTL (FLL)

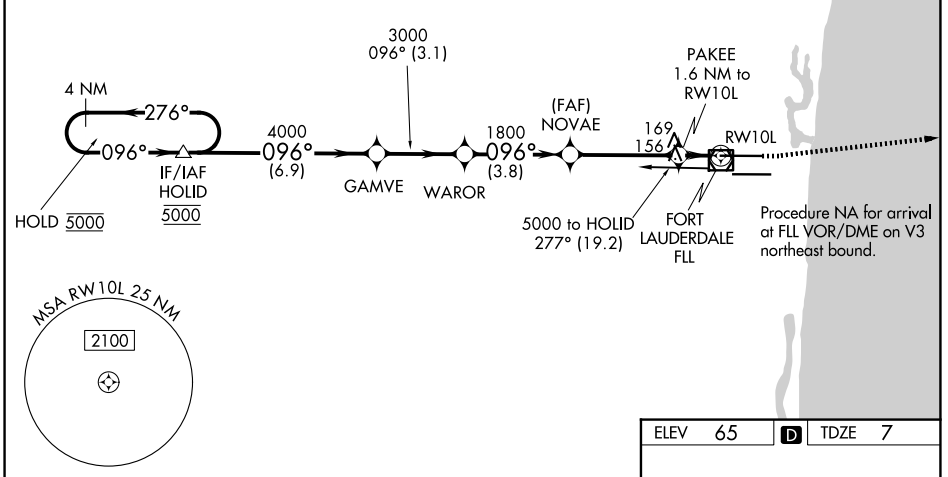
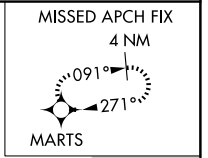
RNP APCH-GPS.

⚠ For uncompensated Baro-VNAV systems, LNAV/VNAV NA below 7°C or above 54°C. Inop table does not apply to LPV all Cats. LNAV procedure NA during simultaneous operations. For inop ALS, increase LNAV/VNAV visibility all Cats to 1½ SM, LNAV visibility Cat A and B to RVR 5500 and Cats C/D to RVR 6000. Use of FD or AP required during simultaneous operations. Simultaneous approach authorized.

MALSR 




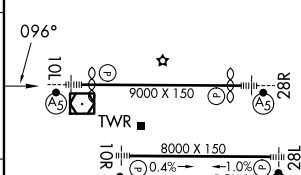
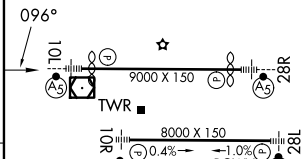
MISSED APPROACH: Climb to 800 then climbing left turn to 4000 direct MARTS and hold. Continue climb-in-hold to 4000.

D-ATIS 135.0	MIAMI APP CON 133.775 285.6	FORT LAUDERDALE TOWER 119.3 257.8	GND CON 121.4
------------------------	---------------------------------------	---	-------------------------



SE-3, 11 JUN 2026 to 09 JUL 2026

SE-3, 11 JUN 2026 to 09 JUL 2026

4 NM Holding Pattern		VGSI and RNAV glidepath not coincident (VGSI Angle 3.00/TCH 66).		800	4000	MARTS
HOLD		GAMVE		  		
5000 ← 276°		4000				
GP 3.00° TCH 49		WAROR				
← 6.9 NM		3.1 NM		3.8 NM		3.9 NM
0.5 NM		1.1 NM				
CATEGORY	A	B	C	D		
LPV DA	207/24		200 (200-½)			
LNAV/VNAV DA	495/50		488 (500-1)			
LNAV MDA	420/24	413 (400-½)		420/40	413 (400-¾)	
CIRCLING	680-1	615 (700-1)		800-2 735 (800-2)	800-2¼ 735 (800-2¼)	
HIRL Rwy 10L-28R and 10R-28L						