

(DARCY8.DARCY) 26078

AL-748 (FAA)

GARY/CHICAGO INTL (GYY)
GARY/CHICAGO, INDIANA

DARCY EIGHT DEPARTURE (RNAV)

CHICAGO DEP CON
133.1 285.6
D-ATIS
134.575
GND CON
121.9
GARY TOWER ★
125.6 (CTAF)

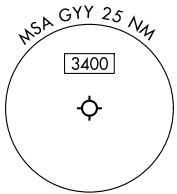
RNAV 1 - DME/DME/IRU or GPS.
RADAR required.

**TOP ALTITUDE:
ASSIGNED BY ATC**

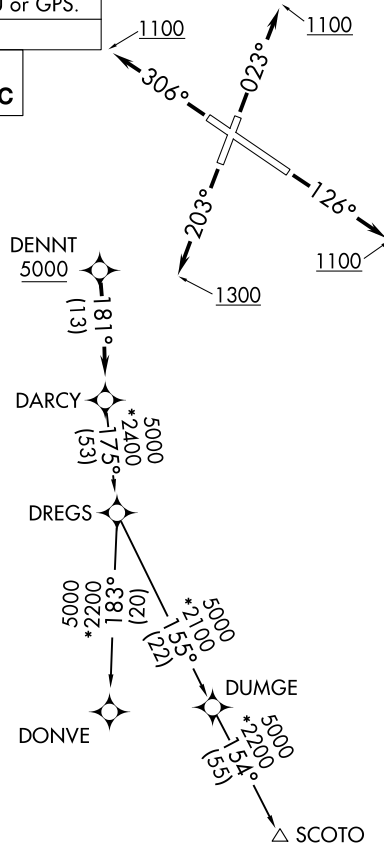
TAKEOFF MINIMUMS:

Rwys 12, 20, 30: Standard.
Rwy 2: Standard with minimum climb of
330'/NM to 900.

NOTE: Turbojet departures maintain 250K
until advised by ATC.



NOTE: Chart not to scale.



DEPARTURE ROUTE DESCRIPTION

- TAKEOFF RUNWAY 2: Climb on heading 023° to 1100, for vectors to DENNT, thence. . . .
- TAKEOFF RUNWAY 12: Climb on heading 126° to 1100, for vectors to DENNT, thence. . . .
- TAKEOFF RUNWAY 20: Climb on heading 203° to 1300, for vectors to DENNT, thence. . . .
- TAKEOFF RUNWAY 30: Climb on heading 306° to 1100, for vectors to DENNT, thence. . . .

. . . . on track 181° to DARC, then on transition, maintain ATC assigned altitude. Expect filed altitude 10 minutes after departure.

DONVE TRANSITION (DARCY8.DONVE):
SCOTO TRANSITION (DARCY8.SCOTO):

DARCY EIGHT DEPARTURE (RNAV)
(DARCY8.DARCY) 19MAR26

GARY/CHICAGO, INDIANA
GARY/CHICAGO INTL (GYY)

EC-2, 11 JUN 2026 to 09 JUL 2026

EC-2, 11 JUN 2026 to 09 JUL 2026