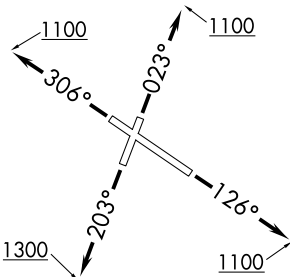


ELANR NINE DEPARTURE (RNAV)

CHICAGO DEP CON
133.1 285.6
D-ATIS
134.575
GND CON
121.9
GARY TOWER ★
125.6 (CTAF)

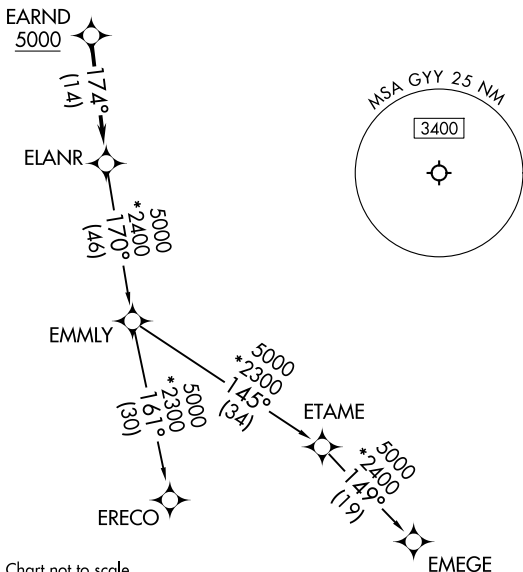
**TOP ALTITUDE:
ASSIGNED BY ATC**



TAKEOFF MINIMUMS:

- Rwys 2,12: Standard with minimum climb of 330'/NM to 2700.
- Rwy 20: Standard with minimum climb of 350'/NM to 2700.
- Rwy 30: Standard with minimum climb of 320'/NM to 2700.

- NOTE: Turbojet departures maintain 250K until advised by ATC.
- NOTE: EMMLY Transition: For aircraft inbound to Indianapolis Terminal Area, or as assigned by ATC.



RNAV 1 - DME/DME/IRU or GPS.

RADAR required.

NOTE: Chart not to scale.

DEPARTURE ROUTE DESCRIPTION

- TAKEOFF RUNWAY 2:** Climb on heading 023° to 1100, for vectors to EARND, thence. . . .
- TAKEOFF RUNWAY 12:** Climb on heading 126° to 1100, for vectors to EARND, thence. . . .
- TAKEOFF RUNWAY 20:** Climb on heading 203° to 1300, for vectors to EARND, thence. . . .
- TAKEOFF RUNWAY 30:** Climb on heading 306° to 1100, for vectors to EARND, thence. . . .

. . . on track 174° to ELANR, then on transition, maintain ATC assigned altitude. Expect filed altitude 10 minutes after departure.

- EMEGE TRANSITION (ELANR9.EMEGE):
- EMMLY TRANSITION (ELANR9.EMMLY):
- ERECO TRANSITION (ELANR9.ERECO):

ELANR NINE DEPARTURE (RNAV)