

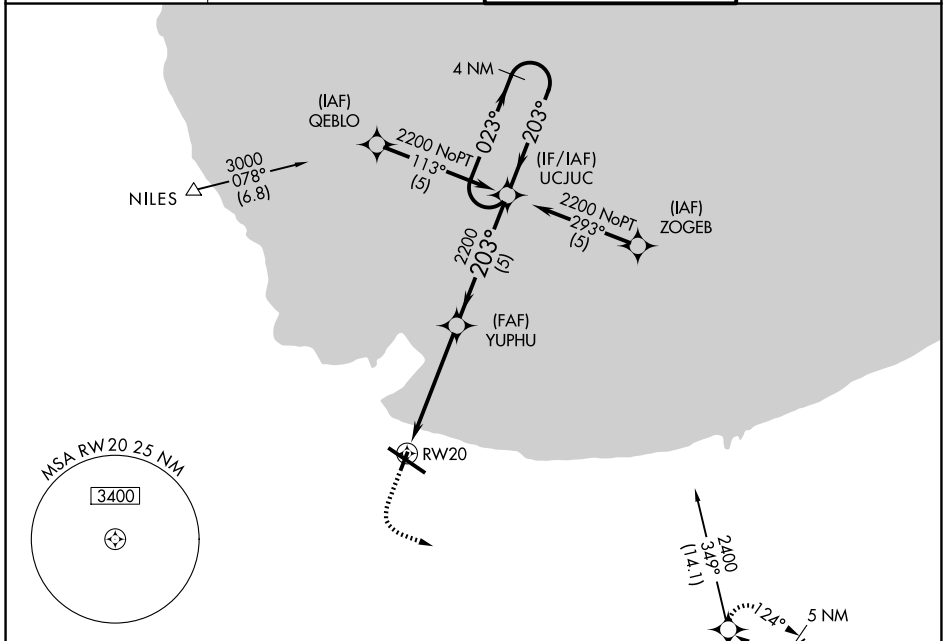
APP CRS 203°	Rwy Ldg TDZE Apt Elev	3604 591 597
------------------------	-----------------------------	---

RNAV (GPS) RWY 20

GARY/CHICAGO INTL (GYY)

	GPS or RNP-0.3 required. DME/DME RNP-0.3 NA.	MISSED APPROACH: Climb to 1500 then climbing left turn to 2400 direct HALIE WP and hold.
--	---	--

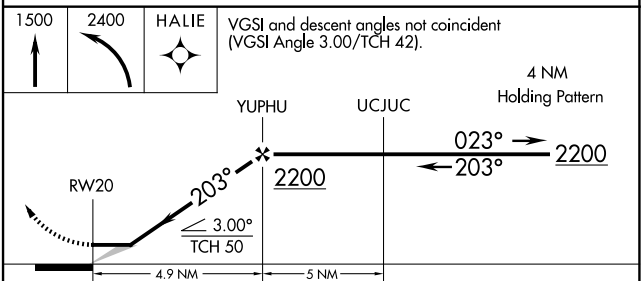
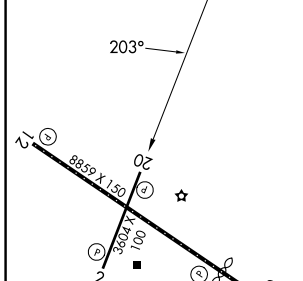
D-ATIS 134.575	CHICAGO APP CON 133.1 285.6	GARY TOWER ★ 125.6 (CTAF) 1	GND CON 121.9
--------------------------	---------------------------------------	---------------------------------------	-------------------------



EC-2, 11 JUN 2026 to 09 JUL 2026

EC-2, 11 JUN 2026 to 09 JUL 2026

ELEV 597	D	TDZE 591
----------	----------	----------



1500	2400	HALIE	VGSI and descent angles not coincident (VGSI Angle 3.00/TCH 42).	
RWY 20		YUPHU	UCJUC	4 NM Holding Pattern
4.9 NM		5 NM		
CATEGORY	A	B	C	D
GLS PA DA	NA			
LNAV/VNAV DA	NA			
LNAV MDA	1080-1 489 (500-1)	1080-1¼ 489 (500-1¼)	1080-1½ 489 (500-1½)	1080-1½ 489 (500-1½)
CIRCLING	1140-1 543 (600-1)	1180-1 583 (600-1)	1400-2¼ 803 (900-2¼)	1420-2¾ 823 (900-2¾)

REIL Rwy 2, 12 and 20 **1**
HIRL Rwy 12-30 **1**
MIRL Rwy 2-20 **1**

GARY/CHICAGO, INDIANA
Orig-B 05SEP24

41°37'N - 87°25'W

GARY/CHICAGO INTL (GYY)

RNAV (GPS) RWY 20