

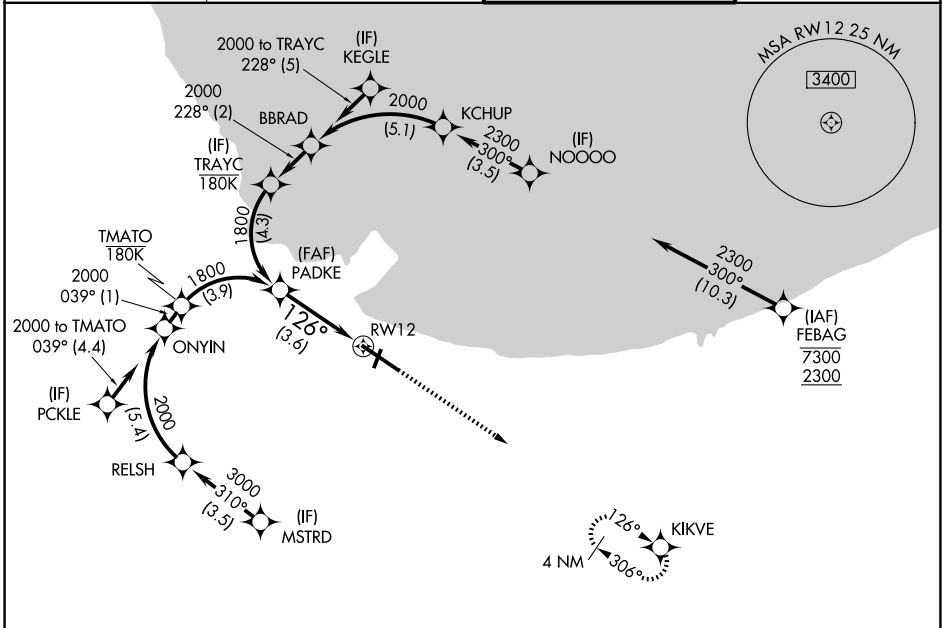
APP CRS	Rwy Ldg	<b>7959</b>
<b>126°</b>	TDZE	<b>597</b>
	Apt Elev	<b>597</b>

# RNAV (RNP) Z RWY 12

GARY/CHICAGO INTL (GYY)

RNP AR APCH - GPS.	For uncompensated Baro-VNAV systems, procedure NA below -16°C or above 54°C.	MISSED APPROACH: Climb to 2400 direct KIKVE and hold.
--------------------	--	---

D-ATIS <b>134.575</b>	CHICAGO APP CON <b>133.1 285.6</b>	GARY TOWER ★ <b>125.6 (CTAF) 0</b>	GND CON <b>121.9</b>
--------------------------	---------------------------------------	---------------------------------------	-------------------------



EC-2, 11 JUN 2026 to 09 JUL 2026

EC-2, 11 JUN 2026 to 09 JUL 2026

