

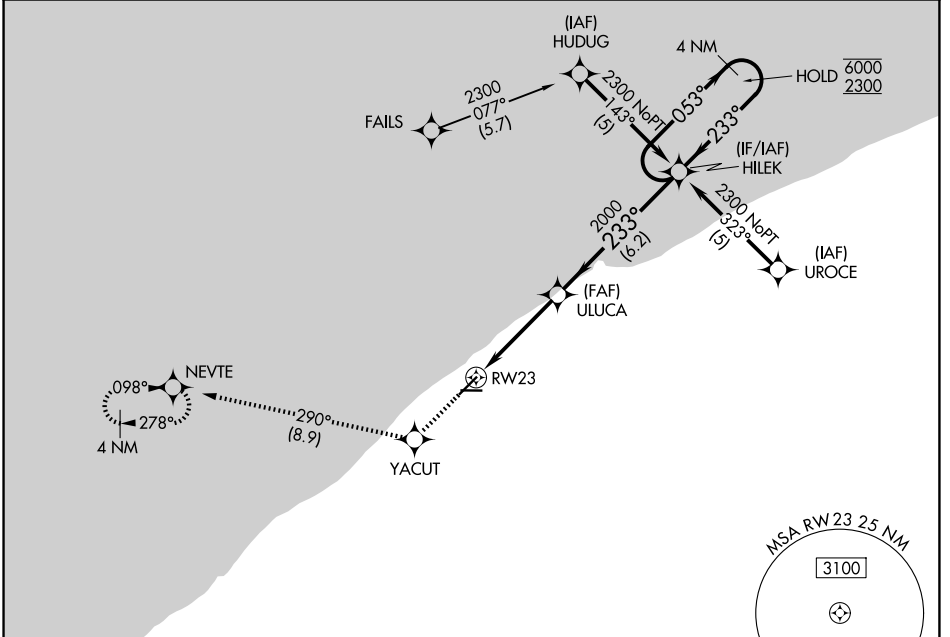
WAAS CH <b>82410</b> <b>W23A</b>	APP CRS <b>233°</b>	Rwy Ldg 5028
	TDZE 623	
	Apt Elev 626	

# RNAV (GPS) RWY 23

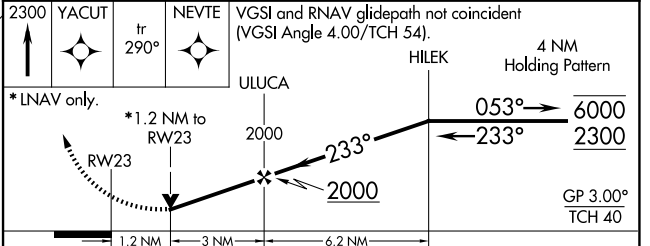
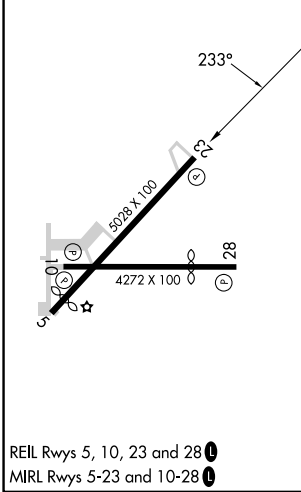
LAKE COUNTY EXEC (LNN)

RNP APCH - GPS.	MISSED APPROACH: Climb to 2300 direct YACUT and on track 290° to NEVTE and hold.
<p>▼ Rwy 23 helicopter visibility reduction below 3/4 SM NA. For uncompensated Baro-VNAV systems, LNAV/VNAV NA below -16°C or above 54°C.</p>	

AWOS-3PT <b>119.225</b>	CLEVELAND APP CON <b>125.35 346.325</b>	UNICOM <b>122.725 (CTAF) 0</b>
----------------------------	--------------------------------------------	-----------------------------------



ELEV 626	TDZE 623
----------	----------



CATEGORY	A	B	C	D
LPV DA		1031-1½ 408 (500-1½)		NA
LNAV/VNAV DA		1142-1¾ 519 (600-1¾)		NA
LNAV MDA	1200-1	577 (600-1)	1200-1½ 577 (600-1½)	NA
CIRCLING	1200-1	574 (600-1)	1520-2¾ 894 (900-2¾)	NA

EC-2, 11 JUN 2026 to 09 JUL 2026

EC-2, 11 JUN 2026 to 09 JUL 2026