

APP CRS	Rwy Ldg	<b>4600</b>
<b>053°</b>	TDZE	<b>624</b>
	Apt Elev	<b>626</b>

# RNAV (GPS) RWY 5

LAKE COUNTY EXEC (LNN)

RNP APCH - GPS.

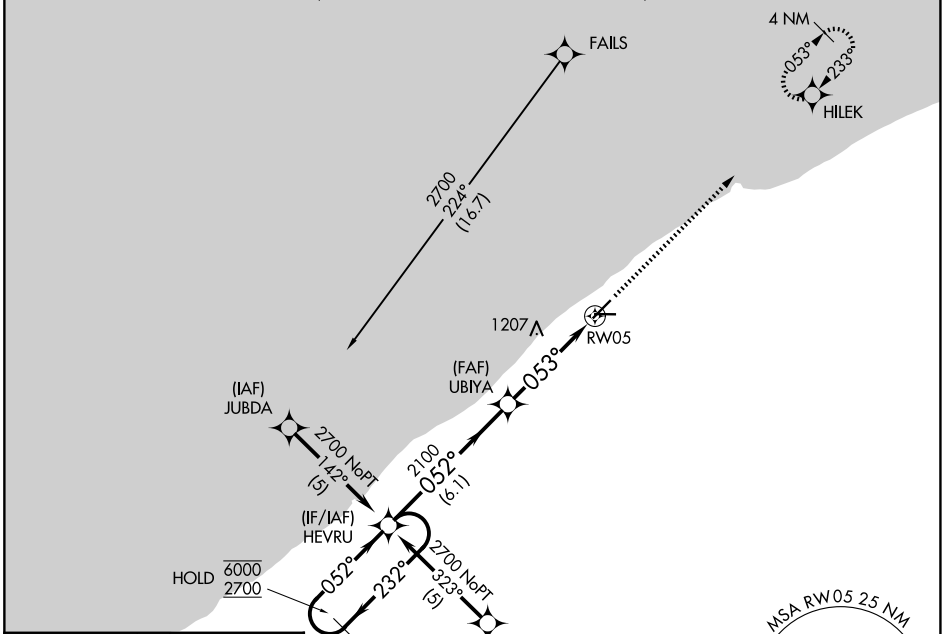
**▽**  
**▲** Rwy 5 helicopter visibility reduction below ¼ SM NA.

MISSED APPROACH: Climb to 2300 direct HILEK and hold.

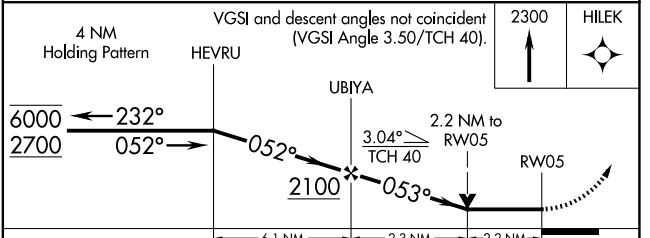
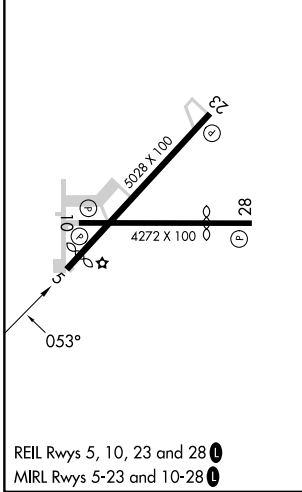
AWOS-3PT  
**119.225**

CLEVELAND APP CON  
**125.35 346.325**

UNICOM  
**122.725 (CTAF) 0**



ELEV	626	TDZE	624
------	-----	------	-----



CATEGORY	A	B	C	D
LNAV MDA	1460-1 836 (900-1)	1460-1¼ 836 (900-1¼)	1460-2½ 836 (900-2½)	NA
CIRCLING	1460-1¼	834 (900-1¼)	1520-2¾ 894 (900-2¾)	NA

EC-2, 11 JUN 2026 to 09 JUL 2026

EC-2, 11 JUN 2026 to 09 JUL 2026