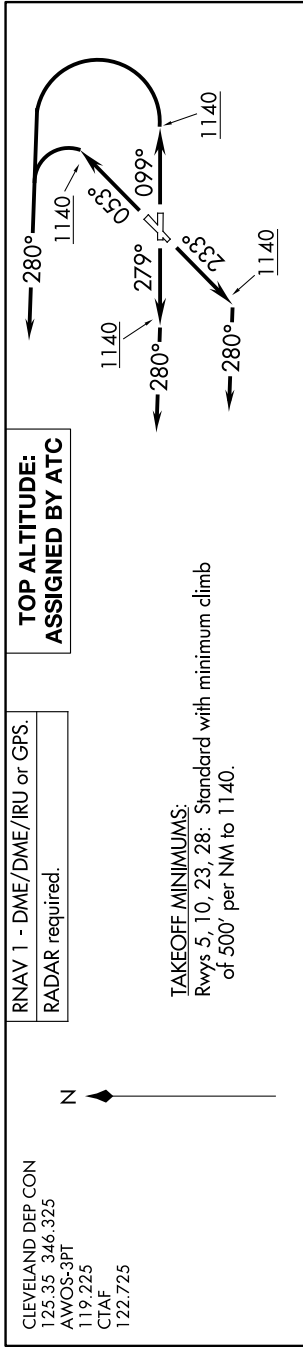


# ZAAPA SIX DEPARTURE (RNAV)

EC-2, 11 JUN 2026 to 09 JUL 2026



RNAV 1 - DME/DME/IRU or GPS.  
RADAR required.

CLEVELAND DEP CON  
125.35 346.325  
AWOS-3PT  
119.225  
CTAF  
122.725

**TAKEOFF MINIMUMS:**  
Rwys 5, 10, 23, 28: Standard with minimum climb of 500' per NM to 1140.

## DEPARTURE ROUTE DESCRIPTION

**TAKEOFF RUNWAY 5:** Climb on heading 053° to 1140, then left turn heading 280° or as assigned by ATC for RADAR vectors to cross MOHUM at or above 9000, thence....

**TAKEOFF RUNWAY 10:** Climb on heading 099° to 1140, then left turn heading 280° or as assigned by ATC for RADAR vectors to cross MOHUM at or above 9000, thence....

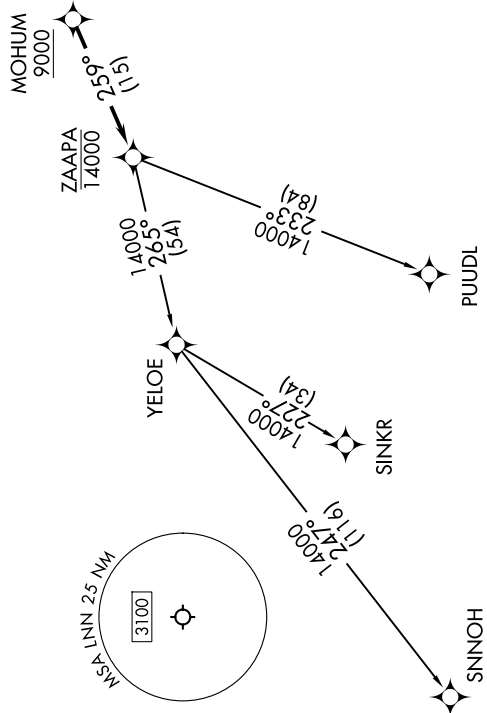
**TAKEOFF RUNWAY 23:** Climb on heading 233° to 1140, then on heading 280° or as assigned by ATC for RADAR vectors to cross MOHUM at or above 9000, thence....

**TAKEOFF RUNWAY 28:** Climb on heading 279° to 1140, then on heading 280° or as assigned by ATC for RADAR vectors to cross MOHUM at or above 9000, thence....

....on track 259° to cross ZAAPA at or below 14000, then on (transition). Maintain ATC assigned altitude, expect filed altitude ten minutes after departure.

PUIJDL TRANSITION (ZAAPA6.PUIJDL)  
SINKR TRANSITION (ZAAPA6.SINKR)  
SNNOH TRANSITION (ZAAPA6.SNNOH)

**NOTE:** PUIJDL TRANSITION: For aircraft at or below FL220 only or as assigned by ATC.



**NOTE:** Chart not to scale.

# ZAAPA SIX DEPARTURE (RNAV)

EC-2, 11 JUN 2026 to 09 JUL 2026