

LOC/DME I-TBQ 110.1 Chan 38	APP CRS 337°	Rwy Ldg TDZE Apt Elev	6431 645 645
---	------------------------	-----------------------------	---

ILS or LOC RWY 34

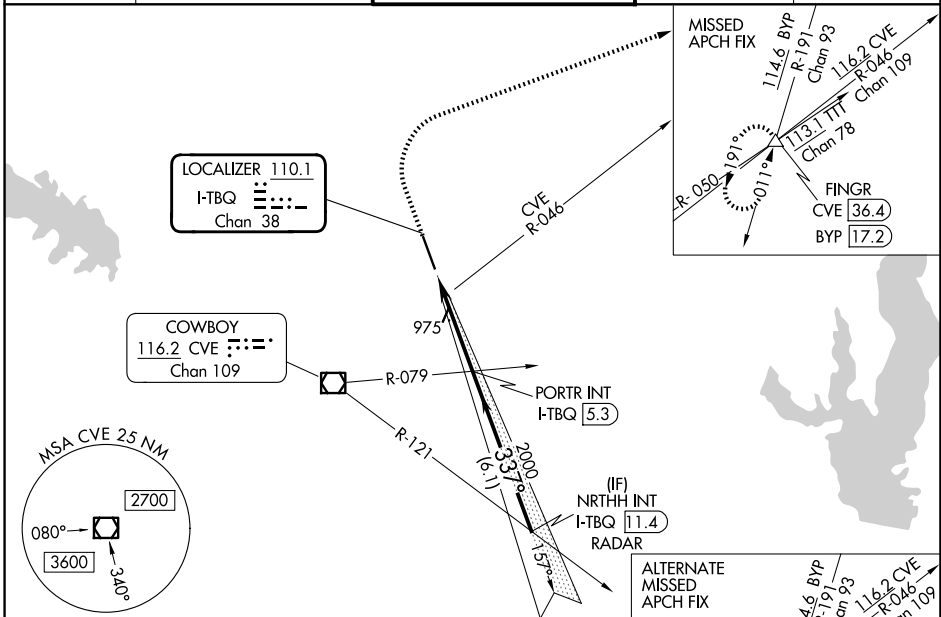
ADDISON (ADS)

RADAR required for procedure entry. DME required.

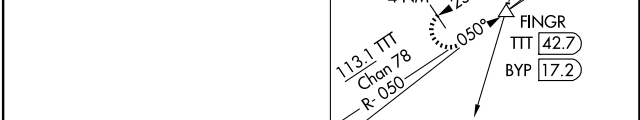
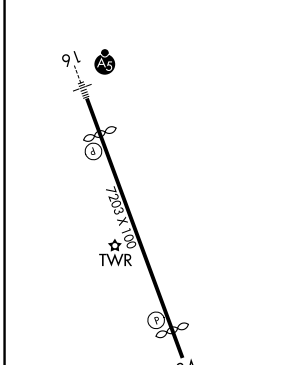
▼
▲ Rwy 34 helicopter visibility reduction below ¼ SM NA.

MISSED APPROACH: Climb to 1500 then climbing right turn to 5000 on heading 067° and CVE VOR/DME R-046 to FINGR/CVE 36.4 DME and hold.

ATIS 133.4	LONE STAR APP CON 124.3 282.275	ADDISON TOWER ★ 126.0 (CTAF) 239.0	GND CON 121.6	UNICOM 122.95
----------------------	---	--	-------------------------	-------------------------



ELEV 645	D	TDZE 645
-----------------	----------	-----------------



1500	5000	CVE R-046	FINGR	VGSI and ILS glidepath not coincident (VGSI Angle 3.00/TCH 60).	NRTHH INT I-TBQ (11.4) RADAR
↑	hdg 067°		PORTR INT I-TBQ (5.3)		
			I-TBQ (2.9)		
					2500
					2000
					2000
					GS 3.00° TCH 54
					1.7 NM
					2.4 NM
					6.1 NM

FAF to MAP 4.1 NM					
Knots	60	90	120	150	180
Min:Sec	4:06	2:44	2:03	1:38	1:22

CATEGORY	A	B	C	D
S-ILS 34	895-¾		250 (300-¾)	
S-LOC 34	1240-1 595 (600-1)		1240-1¾ 595 (600-1¾)	

SC-2, 11 JUN 2026 to 09 JUL 2026

SC-2, 11 JUN 2026 to 09 JUL 2026