

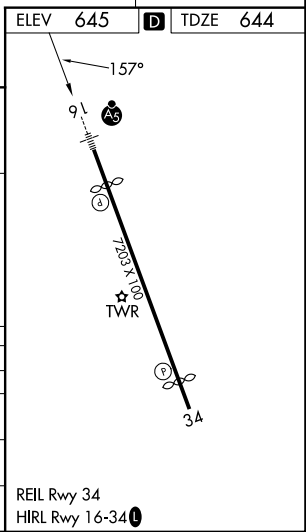
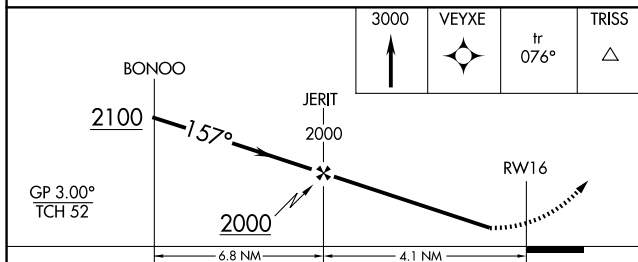
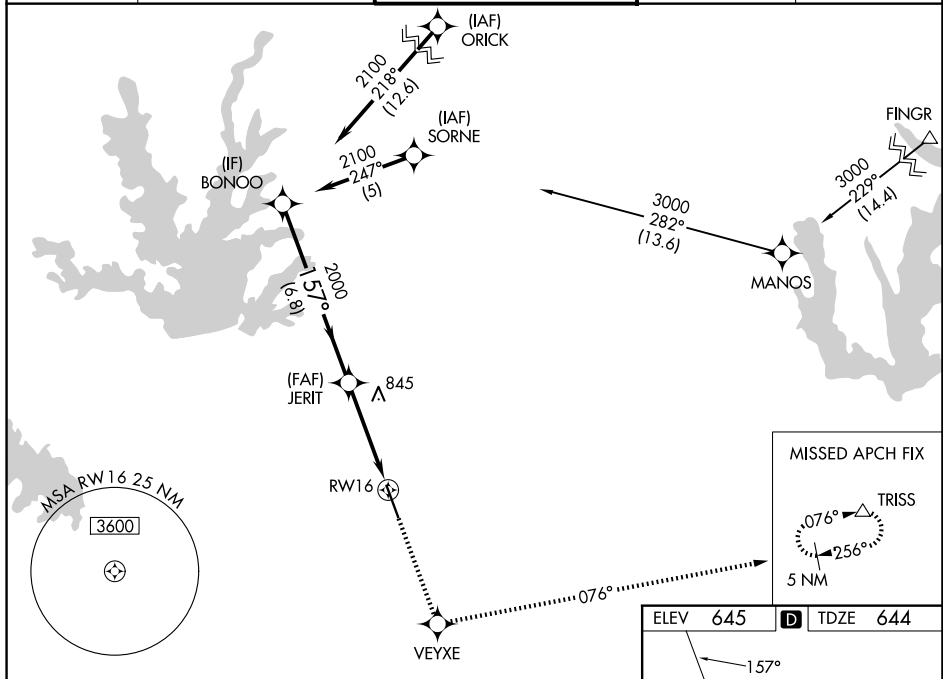
WAAS CH 82202 W16A	APP CRS 157°	Rwy Ldg 6224 TDZE 644 Apt Elev 645
---------------------------------	------------------------	---

RNAV (GPS) RWY 16

ADDISON (ADS)

RNP APCH-GPS. ⚠ For uncompensated Baro-VNAV systems, LNAV/VNAV NA below -16°C or above 54°C. Rwy 16 helicopter visibility reduction below 1 SM NA. Inop table does not apply to LPV all Cats, and LNAV Cats A/B. For inop ALS, increase LNAV/VNAV all Cats visibility to 1½ SM, and LNAV Cats C/D to 1¾ SM.	MALSR 	MISSED APPROACH: Climb to 3000 direct VEYXE and on track 076° to TRISS and hold.
--	-----------	--

ATIS 133.4	LONE STAR APP CON 124.3 282.275	ADDISON TOWER ★ 126.0 (CTAF) 239.0	GND CON 121.6	UNICOM 122.95
----------------------	---	--	-------------------------	-------------------------



GP 3.00° TCH 52	BONOO	JERIT	RWY 16
	2100	2000	
	157°		
	6.8 NM	4.1 NM	
CATEGORY	A	B	C
LPV DA		944-1	300 (300-1)
LNAV/VNAV DA		1077-1	433 (500-1)
LNAV MDA		1100-1	456 (500-1)
CIRCLING	1200-1	555 (600-1)	1280-1¾ 635 (700-1¾)
			1400-2½ 755 (800-2½)

SC-2, 11 JUN 2026 to 09 JUL 2026

SC-2, 11 JUN 2026 to 09 JUL 2026