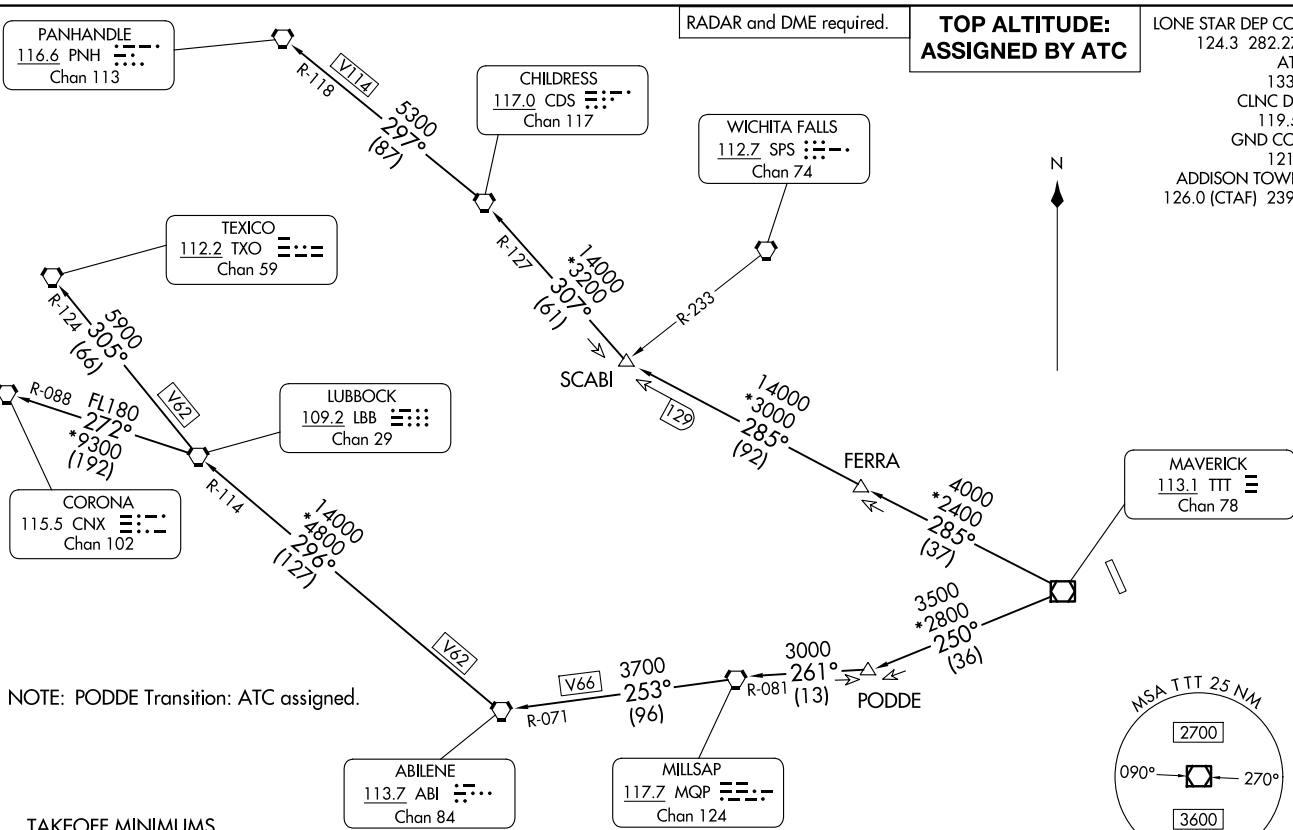


WORTH ONE DEPARTURE
(WORTH1.TTT) 251AN24

DALLAS, TEXAS
ADDISON (ADS)



(CONTINUED ON FOLLOWING PAGE)

WORTH ONE DEPARTURE



DEPARTURE ROUTE DESCRIPTION

When entering controlled airspace, fly assigned heading for RADAR vectors to appropriate route. Maintain ATC assigned altitude.

ABILENE TRANSITION (WORTH1.ABI): From over TTT VOR/DME on TTT R-250 to PODDE, then on MQP R-081 to MQP VORTAC, then on MQP R-253 and ABI R-071 to ABI VORTAC.

CHILDRESS TRANSITION (WORTH1.CDS): From over TTT VOR/DME on TTT R-285 to SCABI, then on CDS R-127 to CDS VORTAC.

CORONA TRANSITION (WORTH1.CNX): From over TTT VOR/DME on TTT R-250 to PODDE, then on MQP R-081 to MQP VORTAC, then on MQP R-253 and ABI R-071 to ABI VORTAC, then on ABI R-296 and LBB R-114 to LBB VORTAC, then on LBB R-272 and CNX R-088 to CNX VORTAC.

LUBBOCK TRANSITION (WORTH1.LBB): From over TTT VOR/DME on TTT R-250 to PODDE, then on MQP R-081 to MQP VORTAC, then on MQP R-253 and ABI R-071 to ABI VORTAC, then on ABI R-296 and LBB R-114 to LBB VORTAC.

PANHANDLE TRANSITION (WORTH1.PNH): From over TTT VOR/DME on TTT R-285 to SCABI, then on CDS R-127 to CDS VORTAC, then on CDS R-297 and PNH R-118 to PNH VORTAC.

PODDE TRANSITION (WORTH1.PODDE): From over TTT VOR/DME on TTT R-250 to PODDE.

TEXICO TRANSITION (WORTH1.TXO): From over TTT VOR/DME on TTT R-250 to PODDE, then on MQP R-081 to MQP VORTAC, then on MQP R-253 and ABI R-071 to ABI VORTAC, then on ABI R-296 and LBB R-114 to LBB VORTAC, then on LBB R-305 and TXO R-124 to TXO VORTAC.

SC-2, 11 JUN 2026 to 09 JUL 2026

SC-2, 11 JUN 2026 to 09 JUL 2026