

BURNS FLAT, OKLAHOMA

AL-778 (FAA)

25219

WAAS CH <b>40217</b> <b>W35A</b>	APP CRS <b>355°</b>	Rwy Ldg TDZE Apt Elev	<b>13503</b> <b>1913</b> <b>1922</b>
--	------------------------	-----------------------------	--

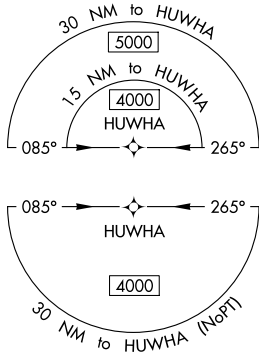
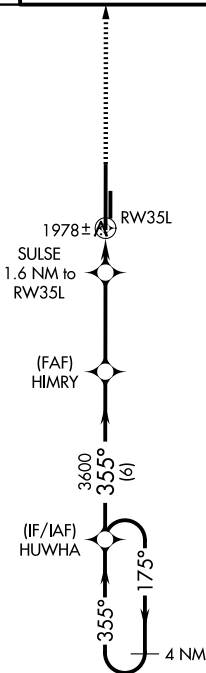
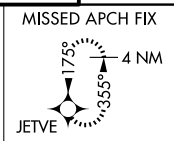
# RNAV (GPS) RWY 35L

CLINTON/SHERMAN (CS/M)

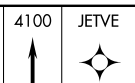
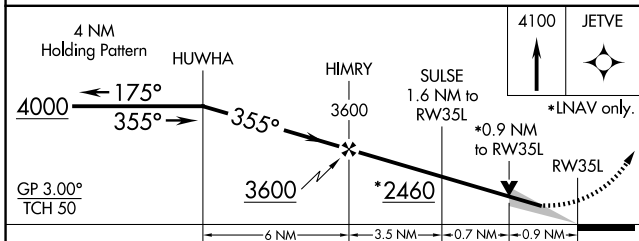
**▼** For uncompensated Baro-VNAV systems, LNAV/VNAV NA below -12°C (11°F) or above 54°C (130°F). Circling NA east of Rwy 17R-35L. DME/DME RNP-0.3 NA.

**MISSED APPROACH:** Climb to 4100 direct JETVE and hold.

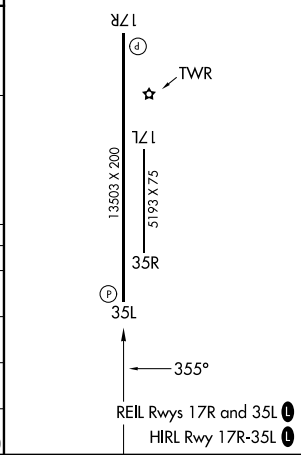
ASOS <b>118.45</b>	FORT WORTH CENTER <b>128.4 269.37</b>	CLINTON/SHERMAN TOWER* <b>119.6 (CTAF) 256.9</b>	GND CON <b>121.7 239.0</b>	UNICOM <b>122.95</b>
-----------------------	--	---	-------------------------------	-------------------------



ELEV	1922	TDZE	1913
------	------	------	------



CATEGORY	A	B	C	D	E
LPV DA		2113-¾	200 (200-¾)		
LNAV/VNAV DA		2163-¾	250 (300-¾)		
LNAV MDA		2240-1	327 (400-1)		
CIRCLING	2340-1 418 (500-1)	2380-1 458 (500-1)	2380-1½ 458 (500-1½)	2620-2¼ 698 (700-2¼)	2620-2½ 698 (700-2½)



BURNS FLAT, OKLAHOMA  
Amdt 1A 17AUG17

35°20'N-99°12'W

# CLINTON/SHERMAN (CS/M)

## RNAV (GPS) RWY 35L

SC-1, 11 JUN 2026 to 09 JUL 2026

SC-1, 11 JUN 2026 to 09 JUL 2026