

BURNS FLAT, OKLAHOMA

AL-778 (FAA)

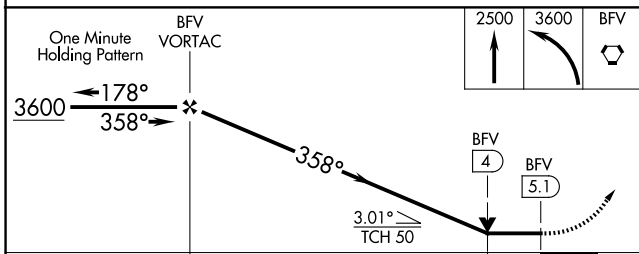
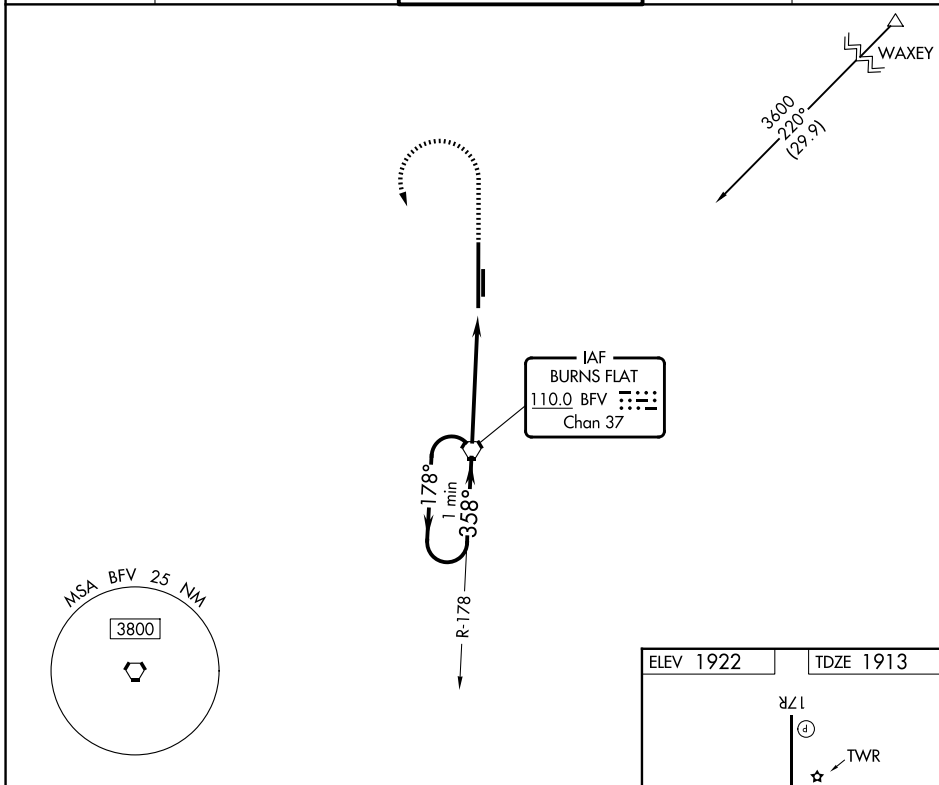
25219

VORTAC BFV <b>110.0</b> Chan 37	APP CRS <b>358°</b>	Rwy Ldg TDZE Apt Elev	<b>13503</b> <b>1913</b> <b>1922</b>
---------------------------------------	------------------------	-----------------------------	--

# VOR RWY 35L

CLINTON/SHERMAN (CSM)

<p><b>▽</b> Circling NA east of runway 17R-35L.</p> <p><b>▲</b> MISSED APPROACH: Climb to 2500 then climbing left turn to 3600 direct BFV VORTAC and hold.</p>		CLINTON/SHERMAN TOWER★ <b>119.6</b> (CTAF) <b>0 256.9</b>	GND CON <b>121.7 239.0</b>	UNICOM <b>122.95</b>
ASOS <b>118.45</b>	FORT WORTH CENTER <b>128.4 269.37</b>			



ELEV 1922	TDZE 1913
REIL Rwy 17R and 35L HIRL Rwy 17R-35L	
FAF to MAP 5.1 NM	
Knots	60 90 120 150 180
Min:Sec	5:06 3:24 2:33 2:02 1:42

CATEGORY	A	B	C	D	E
S-35L	2340-1	427 (500-1)	2340-1¼	427 (500-1¼)	
CIRCLING	2340-1 418 (500-1)	2380-1 458 (500-1)	2380-1½ 458 (500-1½)	2620-2¼ 698 (700-2¼)	2620-2½ 698 (700-2½)

BURNS FLAT, OKLAHOMA  
Amdt 12A 17AUG17

35°20'N-99°12'W

# CLINTON/SHERMAN (CSM) VOR RWY 35L

SC-1, 11 JUN 2026 to 09 JUL 2026

SC-1, 11 JUN 2026 to 09 JUL 2026