

(GANBO1.GANBO) 26078

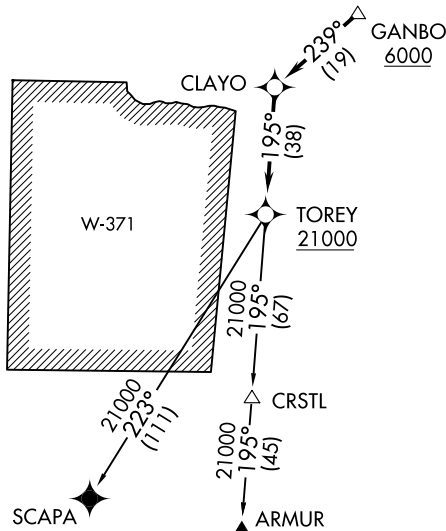
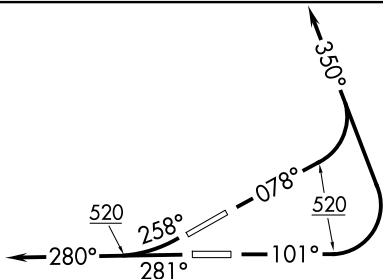
LUIS MUNOZ MARIN INTL (SJU)(TJSJ)

# GANBO ONE DEPARTURE (RNAV)

AL-784 (FAA)

SAN JUAN, PUERTO RICO

D-ATIS 125.8  
 CLNC DEL  
 126.4 284.6  
 CPDLC  
 SAN JUAN TOWER  
 132.05 257.8  
 GND CON  
 121.9 348.6  
 SAN JUAN DEP CON  
 119.4 269.2 (W & SW)  
 120.9 290.2 (N & E)



### TAKEOFF MINIMUMS

Rwys 8, 10, 26, 28: Standard.  
 Minimum obstacle climb of 390' per NM to 4900. ATC climb of 420' per NM to 6000.

NOTE: GPS required.

NOTE: For Turbojet aircraft only.

NOTE: RNAV 1.

NOTE: RADAR required.

NOTE: ATC climb of 264' per NM to 21000.

NOTE: If unable to accept climb rates, advise ATC on initial contact.

NOTE: Chart not to scale.

### DEPARTURE ROUTE DESCRIPTION

**TAKEOFF RUNWAY 8:** Climb heading 078° to 520, then climbing left turn heading 350° or as assigned by ATC, expect vectors to GANBO, then via depicted route to TOREY. Thence. . . .

**TAKEOFF RUNWAY 10:** Climb heading 101° to 520, then climbing left turn heading 350° or as assigned by ATC, expect vectors to GANBO, then via depicted route to TOREY. Thence. . . .

**TAKEOFF RUNWAY 26:** Climb heading 258° to 520, continue climb heading 280° or as assigned by ATC, expect vectors to GANBO, then via depicted route to TOREY. Thence. . . .

**TAKEOFF RUNWAY 28:** Climb heading 281° to 520, continue climb heading 280° or as assigned by ATC, expect vectors to GANBO, then via depicted route to TOREY. Thence. . . .

. . . .via assigned transition. Maintain 5000 unless assigned lower altitude. Expect clearance to FL280, or requested altitude if lower, ten minutes after departure.

ARMUR TRANSITION (GANBO1.ARMUR)

SCAPA TRANSITION (GANBO1.SCAPA)

# GANBO ONE DEPARTURE (RNAV)

SAN JUAN, PUERTO RICO

(GANBO1.GANBO) 27AUG09

LUIS MUNOZ MARIN INTL (SJU)(TJSJ)

SE-3, 11 JUN 2026 to 09 JUL 2026

SE-3, 11 JUN 2026 to 09 JUL 2026