

APP CRS	Rwy Ldg	<b>8016</b>
<b>281°</b>	TDZE	<b>10</b>
	Apt Elev	<b>10</b>

# RNAV (GPS) RWY 28

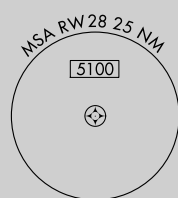
LUIS MUNOZ MARIN INTL (SJU)(TJSJ)

RNP APCH.

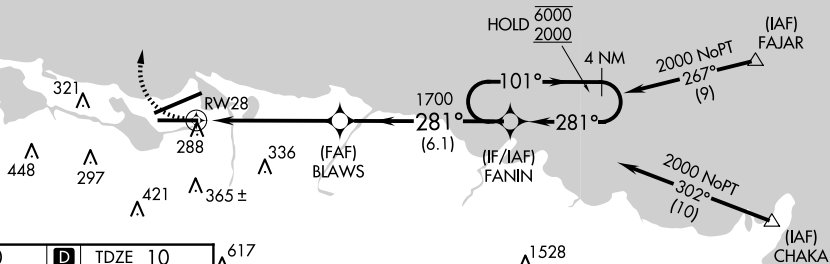
**▼** Rwy 28 helicopter visibility reduction below 3/4 SM NA.

MISSED APPROACH: Climbing right turn to 3000 direct DEEDY and hold.

D-ATIS	SAN JUAN APP CON	SAN JUAN TOWER	GND CON	CLNC DEL	CPDLC
<b>125.8</b>	<b>119.4 269.2</b> (WEST & SW) <b>120.9 290.2</b> (NORTH & EAST)	<b>132.05 257.8</b>	<b>121.9 348.6</b>	<b>126.4 284.6</b>	

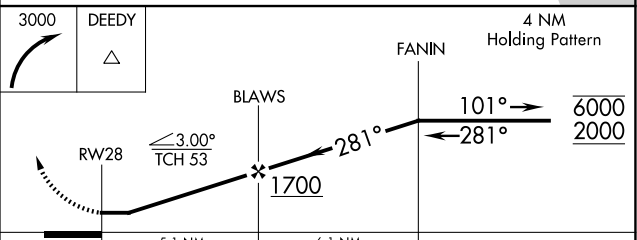
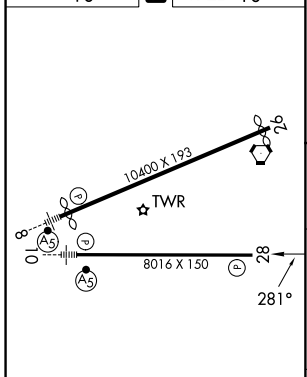


Procedure NA for arrivals at FAJAR on RTE2 eastbound.



Procedure NA for arrivals at CHAKA on RTE6 southeast bound.

ELEV 10	<b>D</b>	TDZE 10
---------	----------	---------



CATEGORY	A	B	C	D
LNAV MDA	540-1	530 (600-1)	540-1½	530 (600-1½)
<b>C</b> CIRCLING	600-1	590 (600-1)	740-2 730 (800-2)	920-3 910 (1000-3)

REIL Rwy 26  
HIRL Rwy 8-26 and 10-28