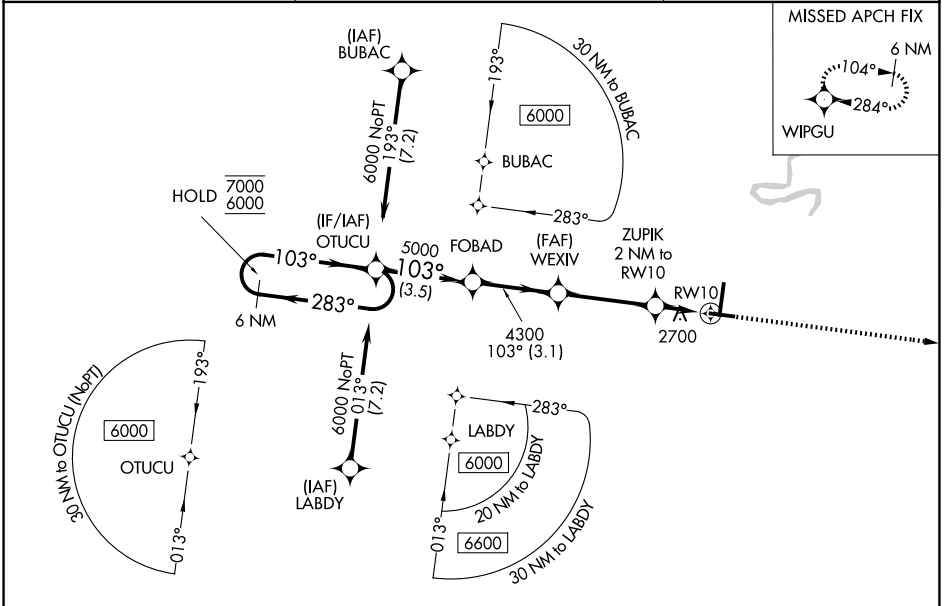


WAAS CH <b>82023</b> <b>W10A</b>	APP CRS <b>103°</b>	Rwy Ldg TDZE Apt Elev	<b>5001</b> <b>2502</b> <b>2504</b>
--	------------------------	-----------------------------	---

# RNAV (GPS) RWY 10

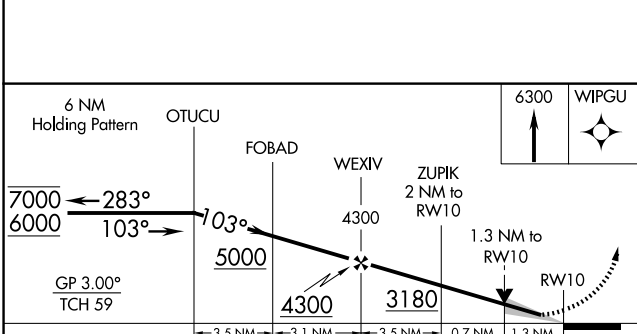
RALEIGH COUNTY MEML (BKW)

RNP APCH - GPS.		MISSED APPROACH: Climb to 6300 direct WIPGU and hold, continue climb-in-hold to 6300.
<p>For uncompensated Baro-VNAV systems, LNAV/VNAV NA below -14°C or above 54°C.</p>	ASOS <b>121.55</b>	CHARLESTON APP CON <b>125.4 269.125</b>
		UNICOM <b>123.0 (CTAF) 0</b>



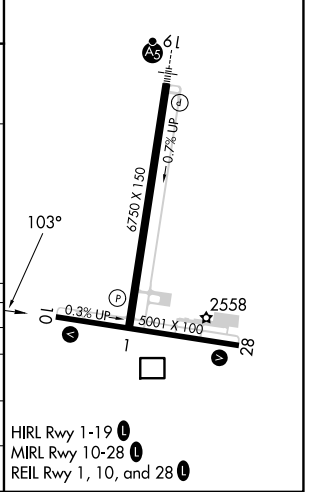
NE-4, 11 JUN 2026 to 09 JUL 2026

NE-4, 11 JUN 2026 to 09 JUL 2026



ELEV 2504	<b>D</b> TDZE 2502
-----------	--------------------

CATEGORY	A	B	C	D
LPV DA		2702-3/4	200 (200-3/4)	
LNAV/VNAV DA		3016-13/8	514 (600-13/8)	
LNAV MDA	2960-1	458 (500-1)	2960-13/8	458 (500-13/8)
CIRCLING	3120-1 616 (700-1)	3180-1 676 (700-1)	3320-2 1/2 816 (900-2 1/2)	3500-3 996 (1000-3)



HIRL Rwy 1-19   
 MIRL Rwy 10-28   
 REIL Rwy 1, 10, and 28