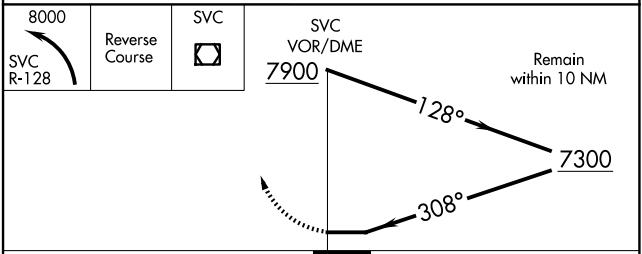
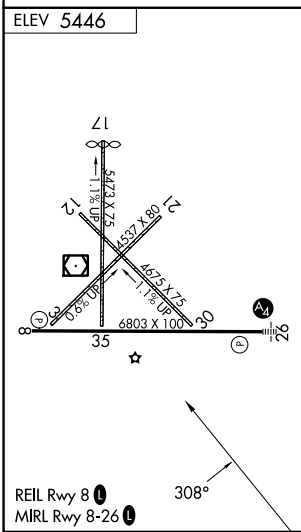
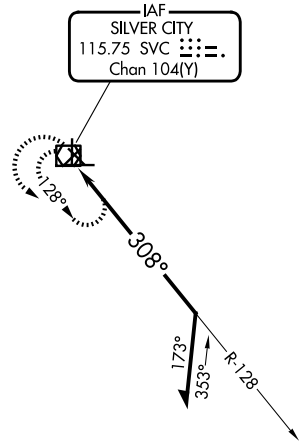
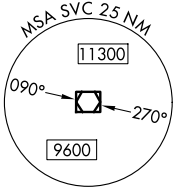


VOR/DME SVC <b>115.75</b> Chan <b>104(Y)</b>	APP CRS <b>308°</b>	Rwy Ldg TDZE Apt Elev <b>5446</b>	<b>N/A</b> <b>N/A</b> <b>5446</b>
--	------------------------	--	---

**VOR-A**  
GRANT COUNTY (SVC)

**⚠** When local altimeter setting not received, procedure NA. Circling NA to Rwys 3, 12, 17, 21, 30, 35. **MISSED APPROACH:** Climbing left turn to 8000 on SVC R-128, then reverse course to SVC VOR/DME and hold.

AWOS-3 <b>126.725</b>	ALBUQUERQUE CENTER <b>134.45 327.15</b>	UNICOM <b>122.8 (CTAF)</b>
--------------------------	--	-------------------------------



CATEGORY	A	B	C	D
CIRCLING	5940-1 494 (500-1)	5960-1 514 (600-1)	6100-1¾ 654 (700-1¾)	6740-3 1294 (1300-3)

SW-1, 11 JUN 2026 to 09 JUL 2026

SW-1, 11 JUN 2026 to 09 JUL 2026