

WAAS	APP CRS	Rwy Idg	5343
CH 97421	053°	TDZE	124
W05A		Apt Elev	125

RNAV (GPS) RWY 5

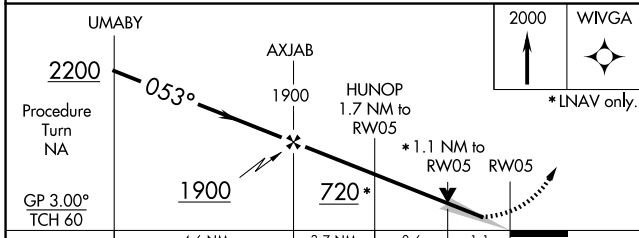
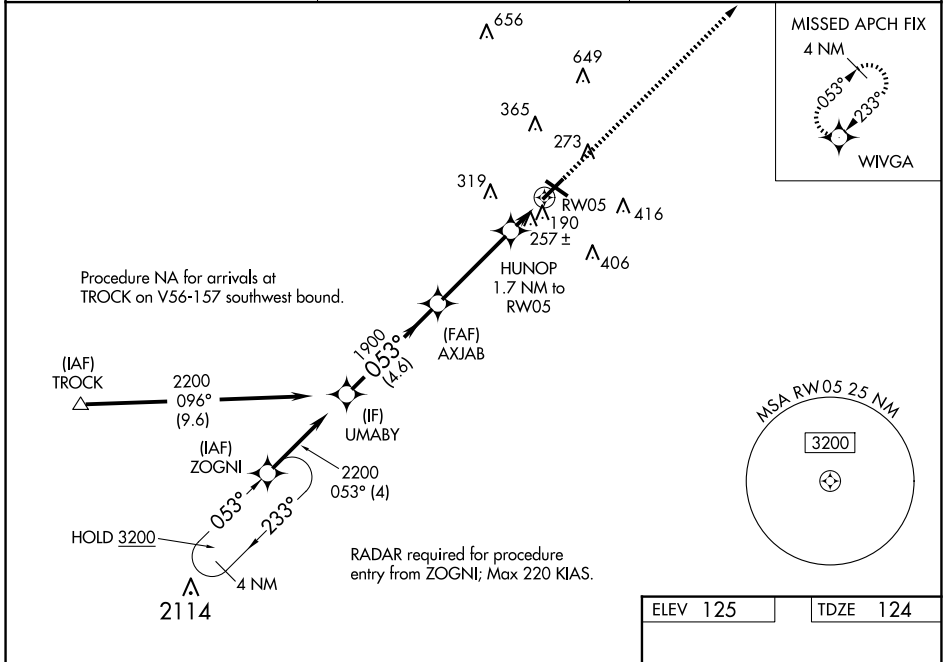
LUMBERTON RGNL (LBT)

RNP APCH - GPS.

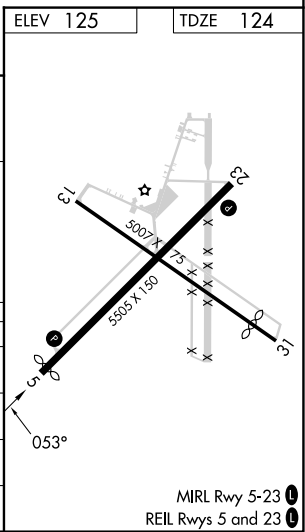
⚠ When local altimeter setting not received, use Maxton altimeter setting: increase LPV DA to 383 feet; LNAV/VNAV DA to 594 feet and all visibility $\frac{1}{4}$ SM; increase all MDAs 60 feet and LNAV visibility Cat C and Circling Cat C $\frac{1}{4}$ SM. Baro-VNAV and VDP NA when using Maxton altimeter setting. Circling Rwy 13, 31 NA at night. For uncompensated Baro-VNAV systems, LNAV/VNAV NA below -15°C or above 54°C.

MISSED APPROACH:
Climb to 2000 direct WIVGA and hold.

ASOS 134.775	FAYETTEVILLE APP CON 133.0 290.25	UNICOM 122.8 (CTAF) 📶
-------------------------------	--	---



CATEGORY	A	B	C	D
LPV DA	327- $\frac{3}{4}$	203 (300- $\frac{3}{4}$)		NA
LNAV/VNAV DA	538-1 $\frac{1}{8}$	414 (500-1 $\frac{1}{8}$)		NA
LNAV MDA	520-1	396 (400-1)	520-1 $\frac{1}{8}$ 396 (400-1 $\frac{1}{8}$)	NA
CIRCLING	660-1	535 (600-1)	720-1 $\frac{1}{2}$ 595 (600-1 $\frac{1}{2}$)	NA



SE-2, 11 JUN 2026 to 09 JUL 2026

SE-2, 11 JUN 2026 to 09 JUL 2026