

WAAS CH 63001 W35A	APP CRS 355°	Rwy Ldg 6002 TDZE 532 Apt Elev 548
--	------------------------	---

RNAV (GPS) RWY 35

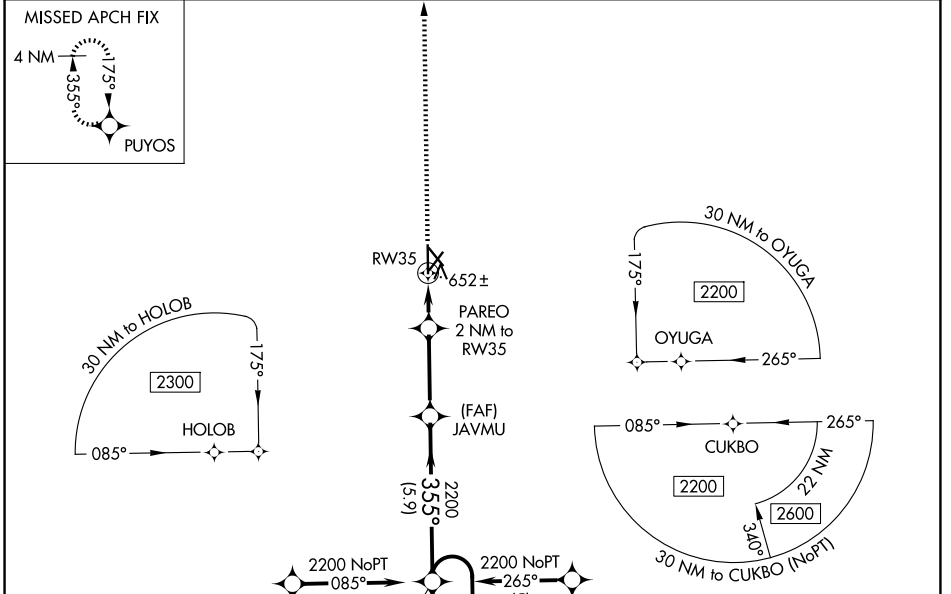
COX FLD (P.R.X)

RNP APCH - GPS.

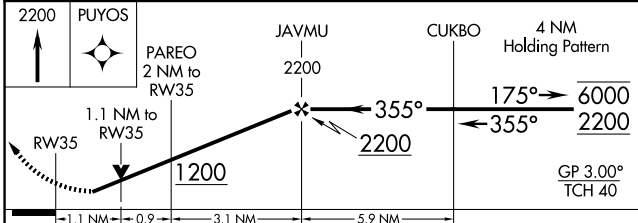
▼ For uncompensated Baro-VNAV systems, LNAV/VNAV NA below -8°C or above 54°C. Baro-VNAV and VDP NA when using SLR altimeter setting. Rwy 35 helicopter visibility reduction below 3/4 SM NA. When local altimeter setting not received, use SLR altimeter setting and increase LPV DA to 859 feet and all visibilities 1/4 SM. Increase LNAV/VNAV DA to 1002 feet and all visibilities 1/4 SM. Increase all MDAs 80 feet and LNAV visibility Cat C/D 1/4 SM, and Circling visibility Cat C/D 1/4 SM.

⚠ MISSED APPROACH: Climb to 2200 direct PUYOS and hold.

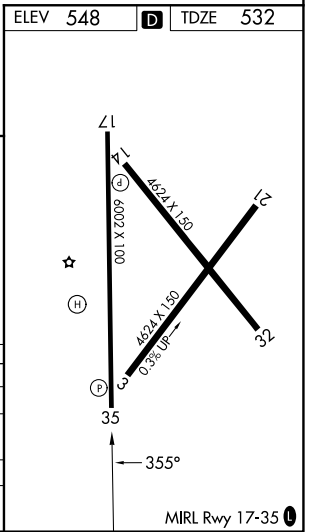
AWOS-3PT 119.675	FORT WORTH CENTER 124.875 370.95	UNICOM 122.975 (CTAF) 1
----------------------------	--	--



ELEV 548	D	TDZE 532
----------	----------	----------



CATEGORY	A	B	C	D
LPV DA		782-3/4	250 (300-3/4)	
LNAV/VNAV DA		925-1 1/8	393 (400-1 1/8)	
LNAV MDA	920-1	388 (400-1)	920-1 1/8	388 (400-1 1/8)
CIRCLING	1060-1	512 (600-1)	1100-1 1/2 552 (600-1 1/2)	1220-2 1/4 672 (700-2 1/4)



SC-2, 11 JUN 2026 to 09 JUL 2026

SC-2, 11 JUN 2026 to 09 JUL 2026