

LOC I-BAL 109.7	APP CRS 105°	Rwy Ldg 9953 TDZE 143 Apt Elev 143
---------------------------	------------------------	---

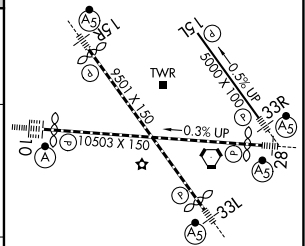
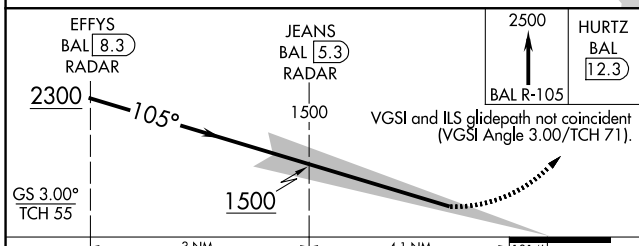
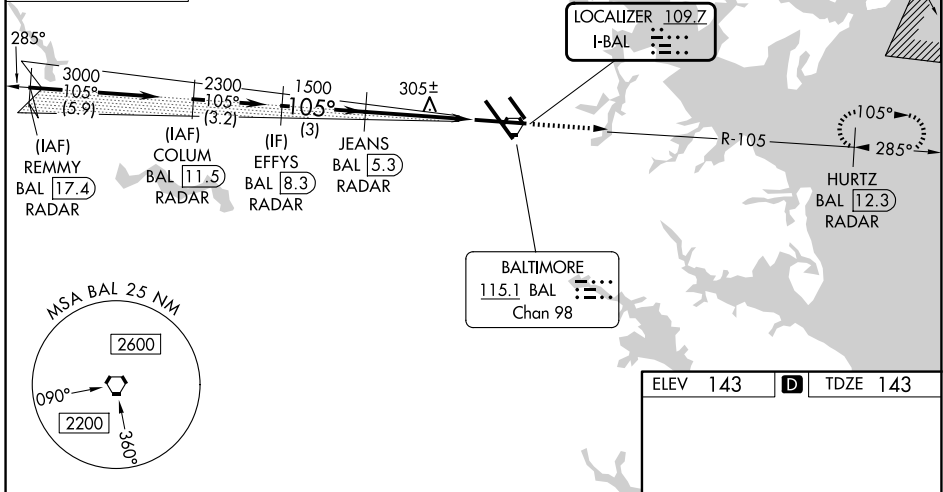
BALTIMORE/ WASHINGTON INTL THURGOOD MARSHALL (BWI)
ILS RWY 10 (CAT II & III)

RADAR required for procedure entry. DME or RADAR required.	ALSF-2 	MISSED APPROACH: Climb to 2500 on BAL VORTAC R-105 to HURTZ/BAL 12.3 DME/RADAR and hold.
---	------------	---

D-ATIS 115.1 127.8	POTOMAC APP CON 119.0 282.275 (020°-100°) 119.7 290.475 (131°-180°) 124.55 317.425 (101°-130°) 128.7 307.9 (181°-019°)	BALTIMORE TOWER	GND CON 121.9	CLNC DEL 118.05
------------------------------	--	------------------------	-------------------------	---------------------------

ALTERNATE MISSED APCH FIX

WESTMINSTER
EMI
117.9
Chan 126



CATEGORY	A	B	C	D
S-ILS 10	CAT II RA 105/12 100 DA 243			
S-ILS 10	CAT III RVR 06			

CATEGORY II & III ILS - SPECIAL AIRCREW & AIRCRAFT CERTIFICATION REQUIRED

ELEV 143	D	TDZE 143
TDZ/CL Rws 10 and 33L REIL Rws 15L and 33R HIRL all Rws		

NE-3, 11 JUN 2026 to 09 JUL 2026

NE-3, 11 JUN 2026 to 09 JUL 2026