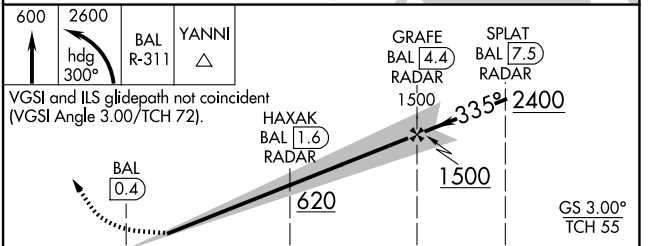
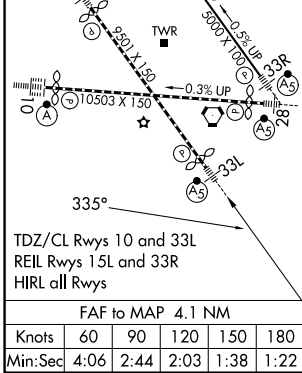
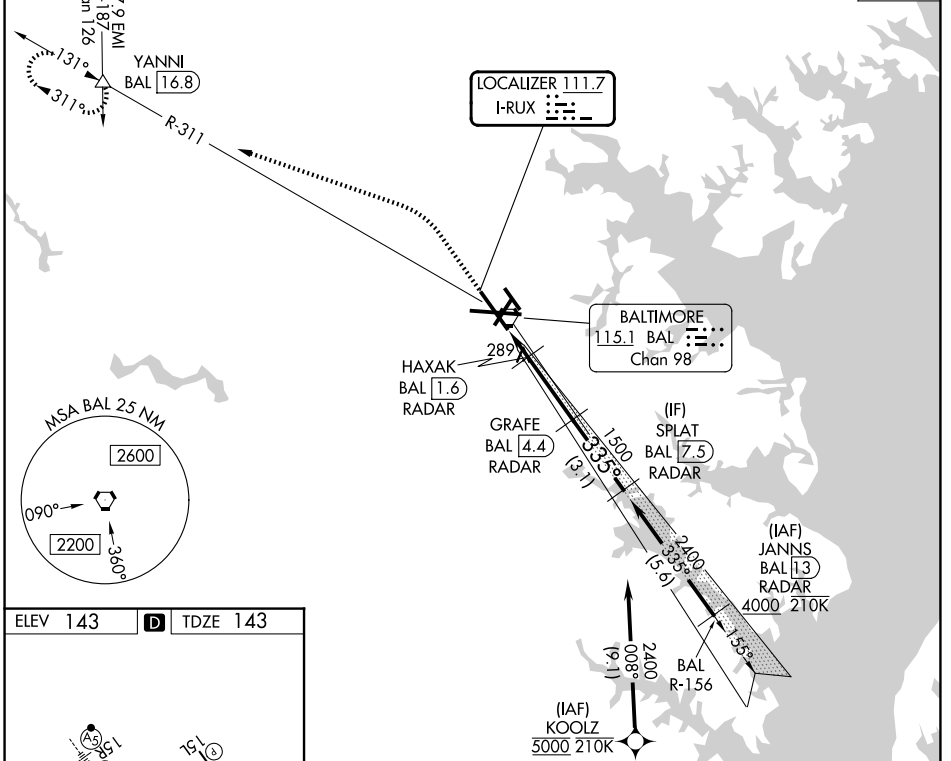


LOC I-RUX 111.7	APP CRS 335°	Rwy Ldg TDZE Apt Elev	8301 143 143
---------------------------	------------------------	-----------------------------	---

BALTIMORE/
WASHINGTON INTL THURGOOD MARSHALL (BWI)

ILS or LOC RWY 33L

RNP APCH - GPS. From KOOLZ.		MALSR	MISSED APPROACH: Climb to 600 then climbing left turn to 2600 on heading 300° and BAL VORTAC R-311 to YANNI INT/BAL 16.8 DME and hold.		
RADAR required for procedure entry. DME or RADAR required.		AS			
Simultaneous approach authorized with ILS or LOC Rwy 33R. DME from BAL VORTAC. DME use requires simultaneous reception of I-RUX and BAL DME.					
D-ATIS 115.1 127.8	POTOMAC APP CON (020°-100°) 119.7 290.475 (131°-180°) (101°-130°) 128.7 307.9 (181°-019°)		BALTIMORE TOWER 119.4 257.8	GND CON 121.9	CLNC DEL 118.05
					CPDLC



CATEGORY	A	B	C	D
S-ILS 33L	343/18		200 (200-1/2)	
S-LOC 33L	540/24	397 (400-1/2)	540/35	397 (400-3/8)
CIRCLING	640-1 497 (500-1)	660-1 517 (600-1)	700-1 1/2 557 (600-1 1/2)	880-2 1/4 737 (800-2 1/4)

ILS or LOC RWY 33L

NE-3, 11 JUN 2026 to 09 JUL 2026

NE-3, 11 JUN 2026 to 09 JUL 2026