

WAAS CH 69208 W33B	APP CRS 335°	Rwy Ldg TDZE 124 Apt Elev 143
--	------------------------	---

BALTIMORE/ WASHINGTON INTL THURGOOD MARSHALL (BWI) RNAV (GPS) RWY 33R

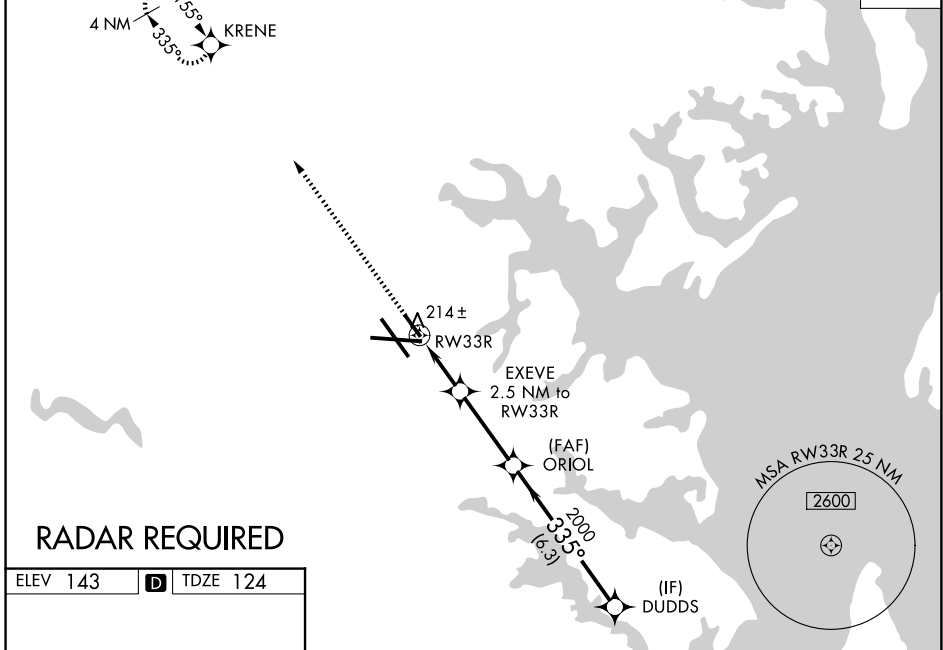
RNP APCH - GPS.

▼ For uncompensated Baro-VNAV systems, LNAV/VNAV NA below -13°C or above 54°C. For inop MALS, increase LNAV/VNAV all Cats visibility to RVR 5000 and LNAV all Cats visibility to RVR 5500. Simultaneous approach authorized. Use of FD or AP providing RNAV track guidance required during simultaneous operations. LNAV procedure NA during simultaneous operations. Helicopter visibility reduction below RVR 4000 NA. Inop table does not apply to LPV, all Cats.

MALS R MISSED APPROACH:
Climb to 3000 direct
KRENE and hold.

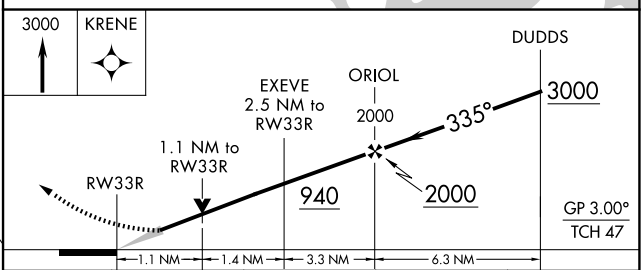
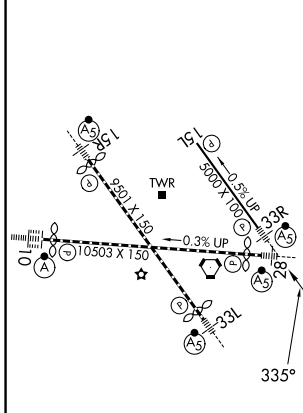
D-ATIS 115.1 127.8	POTOMAC APP CON (020°-100°) 119.0 282.275 (101°-130°) 124.55 317.425	(131°-180°) 119.7 290.475 (181°-019°) 128.7 307.9	BALTIMORE TOWER 119.4 257.8	GND CON 121.9	CLNC DEL 118.05
------------------------------	--	--	---------------------------------------	-------------------------	---------------------------

CPDLC



RADAR REQUIRED

ELEV 143	D	TDZE 124
----------	----------	----------



CATEGORY	A	B	C	D
LPV DA	333/40	209 (200-¾)		NA
LNAV/VNAV DA	406/40	282 (300-¾)		NA
LNAV MDA	520/40	396 (400-¾)		NA
CIRCLING	640-1 497 (500-1)	660-1 517 (600-1)		NA

TDZ/CL Rws 10 and 33L
REIL Rws 15L and 33R
HIRL all Rws

NE-3, 11 JUN 2026 to 09 JUL 2026

NE-3, 11 JUN 2026 to 09 JUL 2026