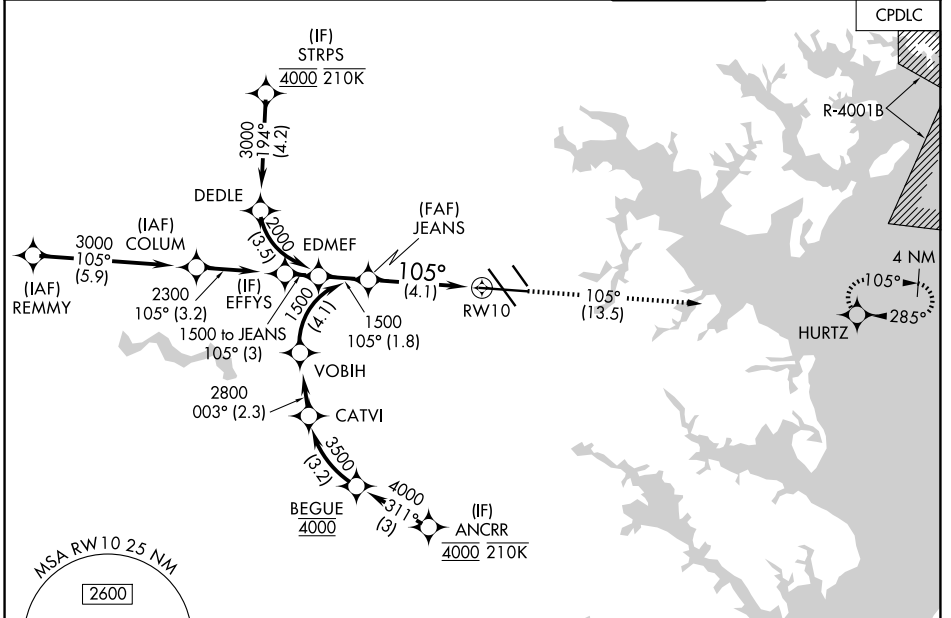


APP CRS 105°	Rwy Ldg TDZE Apt Elev	9953 143 143
------------------------	-----------------------------	---

RNAV (RNP) Z RWY 10

BALTIMORE/WASHINGTON INTL THURGOOD MARSHALL (BWI)

RNP AR APCH - GPS.		ALSF-2	MISSED APPROACH: Climb to 2500 on track 105° to HURTZ and hold.		
<p>▼ For uncompensated Baro-VNAV systems, procedure NA below -11°C or above 54°C. For inop ALS, increase RNP 0.11 all Cats visibility to RVR 4500, increase RNP 0.30 all Cats visibility to 1 3/8 SM.</p>					
D-ATIS 115.1 127.8	POTOMAC APP CON 119.0 282.275 124.55 317.425	(020°-100°) 119.7 290.475 (101°-130°) 126.7 307.9	(131°-180°) 119.4 257.8	GND CON 121.9	CLNC DEL 118.05



NE-3, 11 JUN 2026 to 09 JUL 2026

NE-3, 11 JUN 2026 to 09 JUL 2026

ELEV 143		D TDZE 143	
<p>VGSI and RNAV glidepath not coincident (VGSI Angle 3.00/TCH 71).</p> <p>GP 3.00° TCH 55</p> <p>See planview for multiple IF locations.</p>			
4.1 NM			
CATEGORY	A	B	C
RNP 0.11 DA		444/24	301 (400-1/2)
RNP 0.30 DA		628/50	485 (500-1)
AUTHORIZATION REQUIRED			
<p>TDZ/CL Rwys 10 and 33L REIL Rwys 15L and 33R HIRL all Rwys</p>			

RNAV (RNP) Z RWY 10