

RNAV (RNP) Z RWY 15R

BALTIMORE/WASHINGTON INTL THURGOOD MARSHALL (BWI)

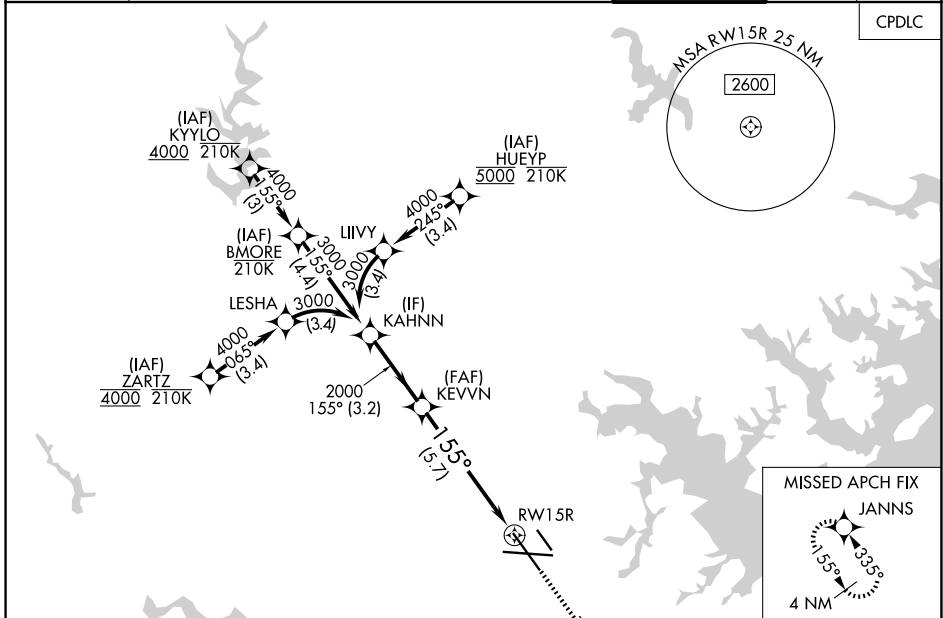
APP CRS	Rwy Ldg	8301
155°	TDZE	138
	Apt Elev	143

RNP AR APCH - GPS.

▼ For uncompensated Baro-VNAV systems, procedure NA below -11°C or above 54°C.
 Simultaneous approach authorized with Rwy 15L.
 For inop ALS, increase RNP 0.11 DA all Cats visibility to RVR 5500.

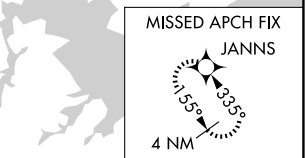
MALSR	MISSED APPROACH: Climb to 2500 on track 155° to JANNIS and hold.

D-ATIS	POTOMAC APP CON	BALTIMORE TOWER	GND CON	CLNC DEL
115.1 127.8	119.0 282.275 (020°-100°) 119.7 290.475 (131°-180°) 124.55 317.425 (101°-130°) 128.7 307.9 (181°-019°)	119.4 257.8	121.9	118.05

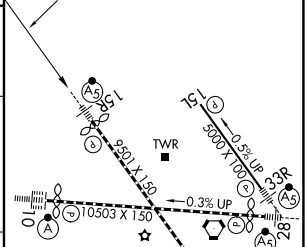
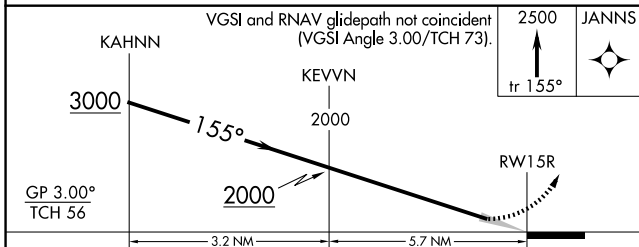


NE-3, 11 JUN 2026 to 09 JUL 2026

NE-3, 11 JUN 2026 to 09 JUL 2026



ELEV 143	D	TDZE 138
----------	----------	----------



CATEGORY	A	B	C	D
RNP 0.11 DA		513/35	375 (400-%)	
RNP 0.30 DA		587/45	449 (500-%)	

AUTHORIZATION REQUIRED

TDZ/CL Rwy 10 and 33L
 REIL Rwy 15L and 33R
 HIRL all Rwy's

RNAV (RNP) Z RWY 15R