

APP CRS **285°**
 Rwy Ldg **9803**
 TDZE **143**
 Apt Elev **143**

RNAV (RNP) Z RWY 28

BALTIMORE/WASHINGTON INTL THURGOOD MARSHALL (BWI)

RNP AR APCH - GPS.

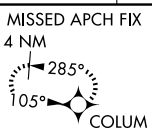
MALSR

MISSED APPROACH: Climb to 2500 on track 285° to COLUM and hold.

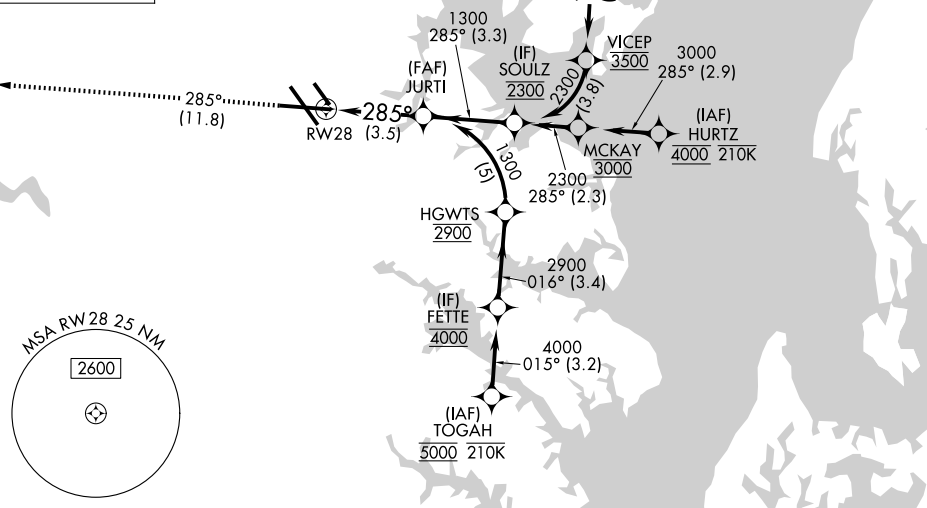
▼ For uncompensated Baro-VNAV systems, procedure NA below -11°C or above 54°C. For inop ALS, increase RNP 0.30 all Cats visibility to RVR 5500.



D-ATIS 115.1 127.8	POTOMAC APP CON (020°-100°) 119.7 290.475 (131°-180°) (101°-130°) 128.7 307.9 (181°-019°)	BALTIMORE TOWER 119.4 257.8	GND CON 121.9	CLNC DEL 118.05
------------------------------	---	---------------------------------------	-------------------------	---------------------------



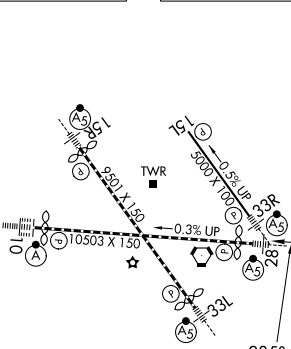
CPDLC



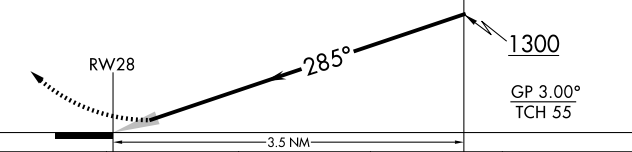
NE-3, 11 JUN 2026 to 09 JUL 2026

NE-3, 11 JUN 2026 to 09 JUL 2026

ELEV **143** **D** TDZE **143**



2500 COLUM VGSI and RNAV glidepath not coincident (VGSI Angle 3.00/TCH 75).
 JURTI 1300
 See planview for multiple IF locations.



CATEGORY	A	B	C	D
RNP 0.30 DA		521/35	378 (400-%)	

AUTHORIZATION REQUIRED

RNAV (RNP) Z RWY 28