

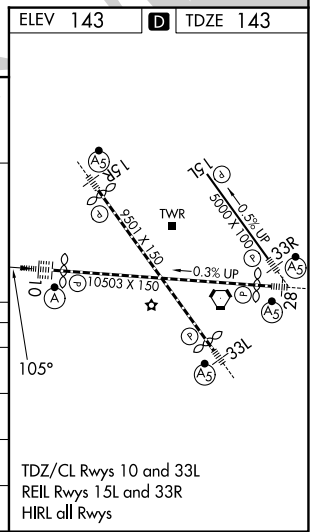
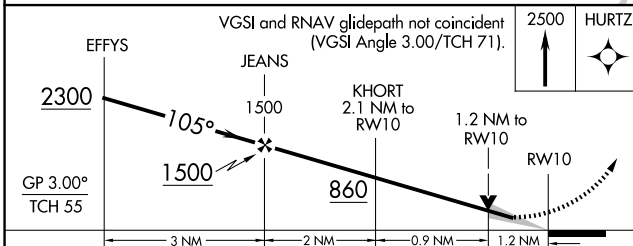
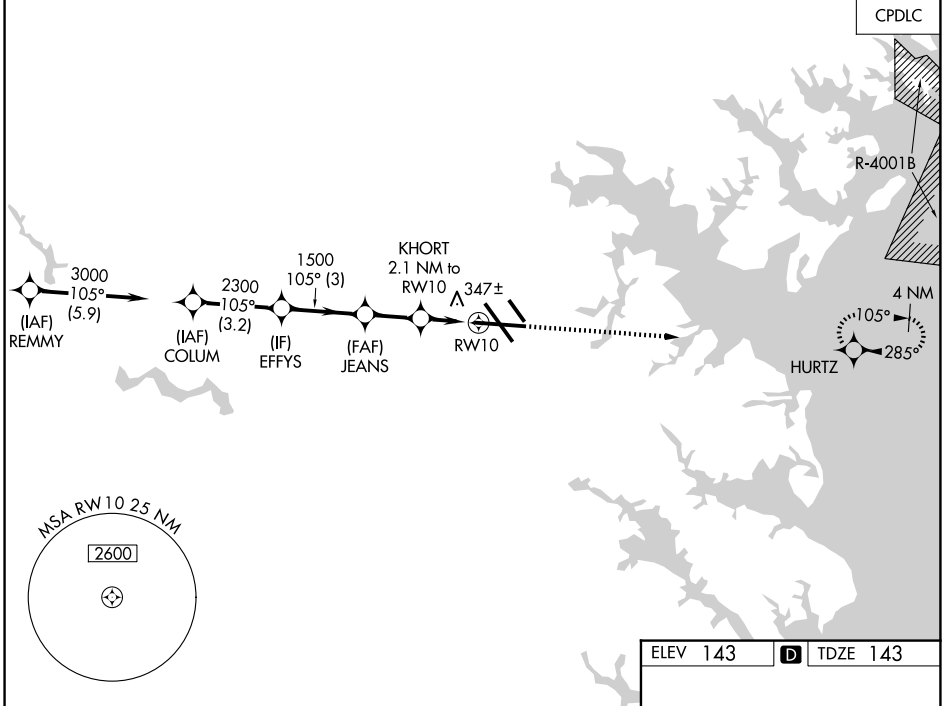
WAAS CH 53707 W10A	APP CRS 105°	Rwy Ldg TDZE 143 Apt Elev 143	9953
--	------------------------	---	-------------

RNAV (GPS) Y RWY 10

BALTIMORE/WASHINGTON INTL THURGOOD MARSHALL (BWI)

RNP APCH - GPS.	ALSIF-2	MISSED APPROACH: Climb to 2500 direct HURTZ and hold.
▼ For uncompensated Baro-VNAV systems, LNAV/VNAV ▲ NA below -11°C or above 54°C.	(A)	

D-ATIS 115.1 127.8	POTOMAC APP CON (020°-100°) 119.7 290.475 (131°-180°) (101°-130°) 128.7 307.9 (181°-019°)	BALTIMORE TOWER 119.4 257.8	GND CON 121.9	CLNC DEL 118.05
------------------------------	---	---------------------------------------	-------------------------	---------------------------



CATEGORY	A	B	C	D
LPV DA	343/18 200 (200-1/2)			
LNAV/VNAV DA	600/45 457 (500-7/8)			
LNAV MDA	600/24 457 (500-1/2)	600/45 457 (500-7/8)		
CIRCLING	640-1 497 (500-1)	660-1 517 (600-1)	700-1 1/2 557 (600-1 1/2)	880-2 1/4 737 (800-2 1/4)

RNAV (GPS) Y RWY 10

NE-3, 11 JUN 2026 to 09 JUL 2026

NE-3, 11 JUN 2026 to 09 JUL 2026