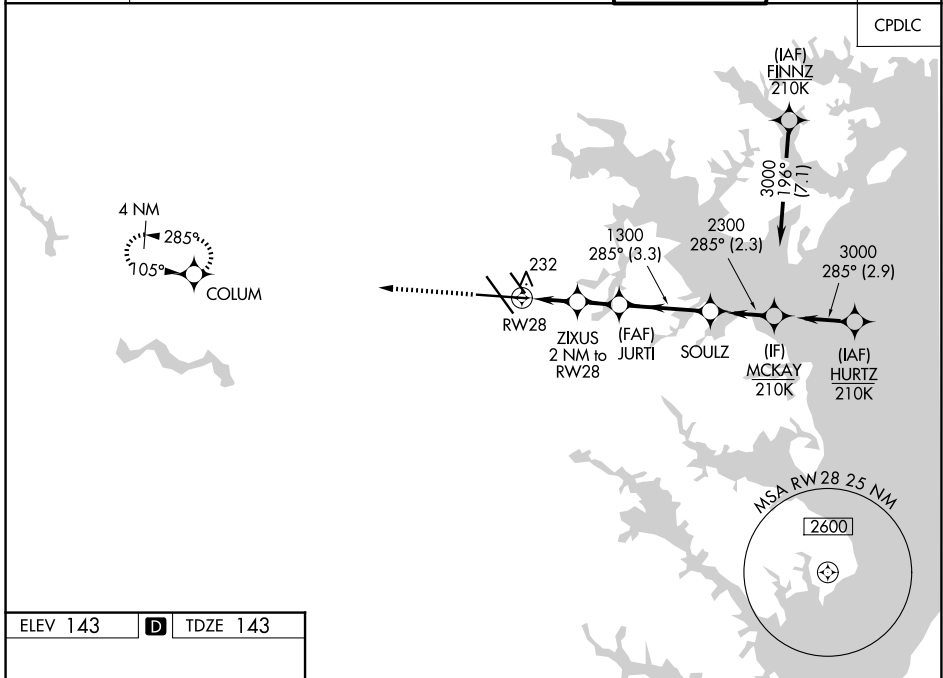


WAAS CH 48808 W28A	APP CRS 285°	Rwy Ldg TDZE Apt Elev	9803 143 143
--	------------------------	-----------------------------	---

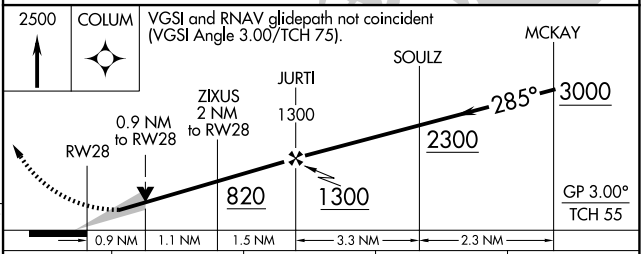
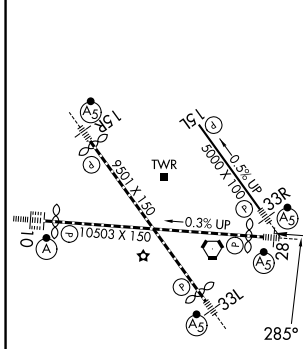
RNAV (GPS) Y RWY 28

BALTIMORE/WASHINGTON INTL THURGOOD MARSHALL (BWI)

RNP APCH - GPS.		POTOMAC APP CON (020°-100°) 119.7 290.475 (131°-180°) (101°-130°) 128.7 307.9 (181°-019°)		BALTIMORE TOWER 119.4 257.8	GND CON 121.9	CLNC DEL 118.05
D-ATIS 115.1 127.8						



ELEV 143	D	TDZE 143
----------	----------	----------



CATEGORY	A	B	C	D
LPV DA *		343/24	200 (200-½)	
LNAV/VNAV DA		395/24	252 (300-½)	
LNAV MDA	500/24	357 (400-½)	500/30	357 (400-¾)
CIRCLING	660-1	517 (600-1)	700-1½ 557 (600-1½)	880-2¼ 737 (800-2¼)

TDZ/CL Rws 10 and 33L
REIL Rws 15L and 33R
HIRL all Rws

RNAV (GPS) Y RWY 28

NE-3, 11 JUN 2026 to 09 JUL 2026

NE-3, 11 JUN 2026 to 09 JUL 2026