

WAAS CH <b>82207</b> <b>W33A</b>	APP CRS <b>335°</b>	Rwy Ldg TDZE <b>143</b> Apt Elev <b>143</b>	<b>8301</b> <b>143</b> <b>143</b>
--	------------------------	---	---

# RNAV (GPS) Y RWY 33L

BALTIMORE/WASHINGTON INTL THURGOOD MARSHALL (BWI)

RNP APCH-GPS.

**▽** For uncompensated Baro-VNAV systems, LNAV/VNAV NA below -11°C or above 54°C.

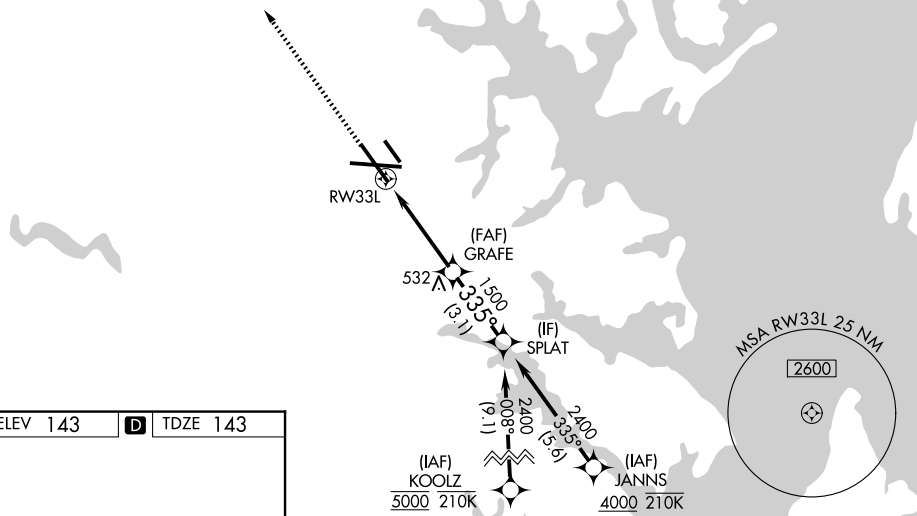
MALS



MISSED APPROACH: Climb to 3000 direct BMORE and hold.

D-ATIS <b>115.1 127.8</b>	POTOMAC APP CON <b>119.0 282.275</b> (020°-100°) <b>124.55 317.425</b> (101°-130°)	<b>119.7 290.475</b> (131°-180°) <b>128.7 307.9</b> (181°-019°)	<b>BALTIMORE TOWER</b> <b>119.4 257.8</b>	<b>GND CON</b> <b>121.9</b>	<b>CLNC DEL</b> <b>118.05</b>
------------------------------	--	--	--	--------------------------------	----------------------------------

CPDLC



ELEV <b>143</b>	<b>D</b>	TDZE <b>143</b>
-----------------	----------	-----------------

