

WAAS CH 78225 W35A	APP CRS 346°	Rwy Ldg TDZE Apt Elev	5840 2369 2380
--	------------------------	-----------------------------	---

RNAV (GPS) RWY 35

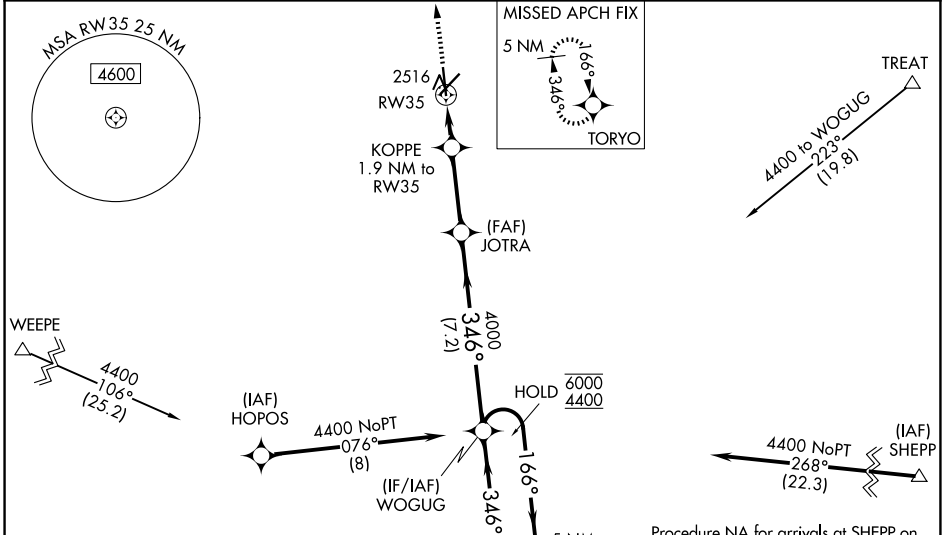
AVENGER FLD (SWW)

RNP APCH - GPS.

⚠ When VGSI inop, Circling Rwy 17 and 22 NA at night. When VGSI inop, Straight-In/Circling Rwy 35 procedure NA at night. Baro-VNAV NA when using SNK altimeter setting. For uncompensated Baro-VNAV systems, LNAV/VNAV NA below -19°C or above 54°C. Rwy 35 helicopter visibility reduction below 3/4 SM NA. When local altimeter setting not received, use SNK altimeter setting and increase LPV DA to 2691 feet, LNAV/VNAV DA to 2799 feet, and all MDAs 80 feet; increase LPV and LNAV/VNAV visibility all Cats 1/4 SM, LNAV visibility Cats C and D 1/8 SM, and Circling Cat C and D visibility 1/4 SM.

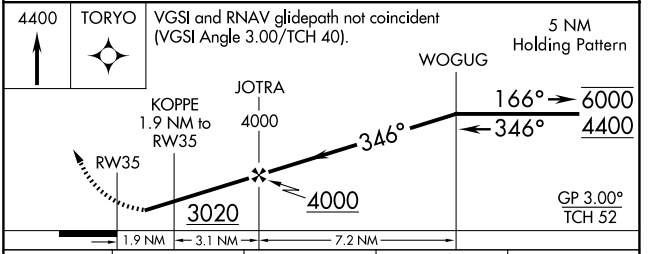
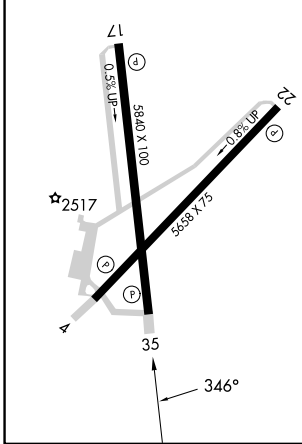
MISSED APPROACH:
Climb to 4400 direct TORYO and hold.

AWOS-3 119.025	ABILENE APP CON 127.2 282.3	UNICOM 122.8 (CTAF)
--------------------------	---------------------------------------	-------------------------------



ELEV 2380	TDZE 2369
------------------	------------------

REIL Rwy 17-35
MIRL Rwy 4-22 and 17-35



CATEGORY	A	B	C	D
LPV DA	2619-3/4		250 (300-3/4)	
LNAV/VNAV DA	2727-1		358 (400-1)	
LNAV MDA	2820-1	451 (500-1)	2820-1 3/8	451 (500-1 3/8)
CIRCLING	2880-1	500 (500-1)	3080-2 700 (700-2)	3080-2 1/4 700 (700-2 1/4)

SC-2, 11 JUN 2026 to 09 JUL 2026

SC-2, 11 JUN 2026 to 09 JUL 2026