

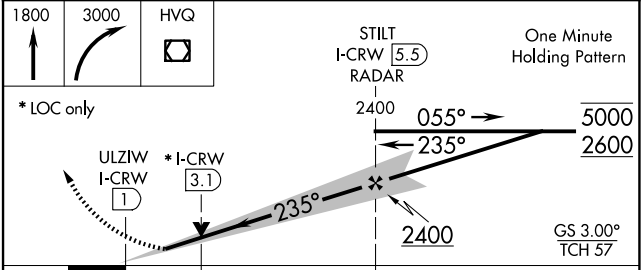
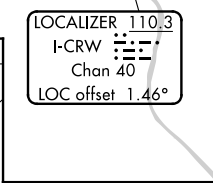
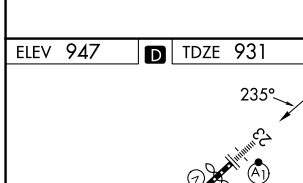
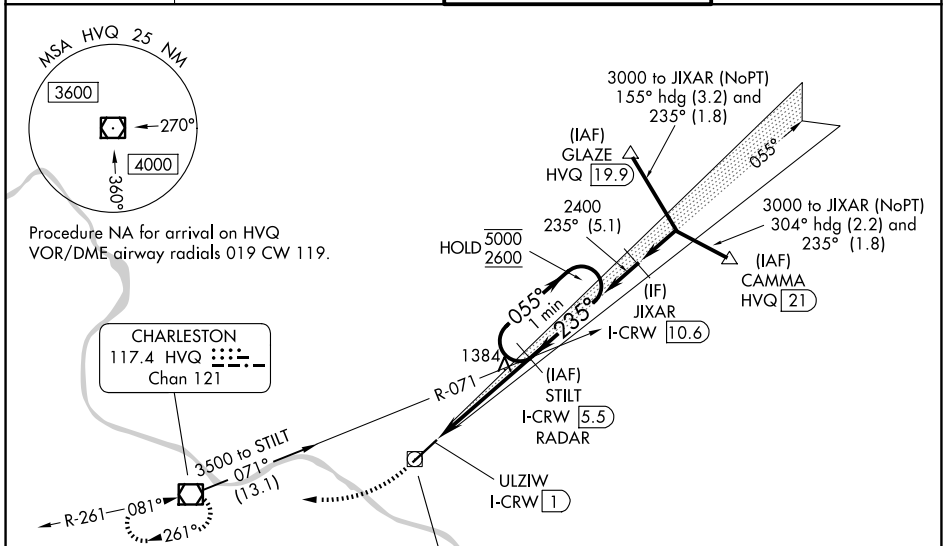
LOC/DME I-CRW <b>110.3</b> Chan <b>40</b>	APP CRS <b>235°</b>	Rwy Ldg TDZE <b>931</b> Apt Elev <b>947</b>
---	------------------------	---

# ILS or LOC RWY 23

WEST VIRGINIA INTL YEAGER (CRW)

DME or RADAR required.		ALSF-1 	MISSED APPROACH: Climb to 1800 then climbing right turn to 3000 direct HVQ VOR/DME and hold.
Autopilot coupled approach NA below 1700. Rwy 23 helicopter visibility reduction below RVR 4000 NA. Inop table does not apply to S-ILS 23. For inop ALS, increase S-LOC 23 Cat A/B visibility to RVR 5500, and Cat C/D to 2 SM.			

ATIS <b>127.6</b>	CHARLESTON APP CON <b>124.1 269.125</b>	CHARLESTON TOWER <b>125.7 257.8</b>	GND CON <b>121.8 348.6</b>
----------------------	--	--	-------------------------------



ELEV 947	D	TDZE 931			
FAF to MAP 4.5 NM					
Knots	60	90	120	150	180
Min:Sec	4:30	3:00	2:15	1:48	1:30

CATEGORY	A	B	C	D
S-ILS 23		1181/40	250 (300-¾)	
S-LOC 23	1640/40	709 (700-¾)	1640-1½	709 (700-1½)

NE-4, 11 JUN 2026 to 09 JUL 2026

NE-4, 11 JUN 2026 to 09 JUL 2026