

RNAV (GPS) Y RWY 5

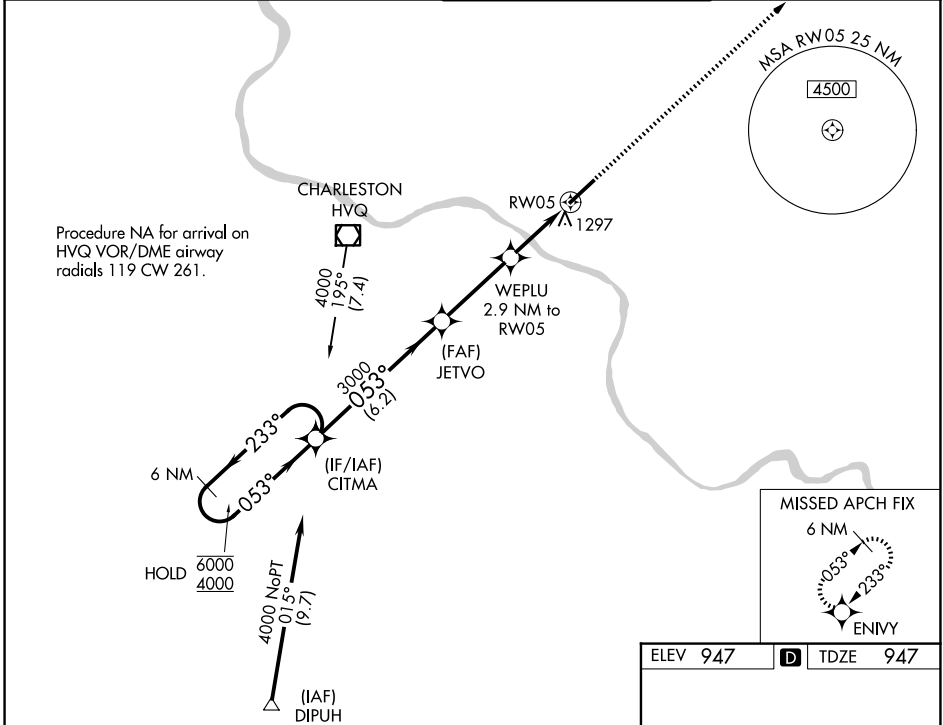
WEST VIRGINIA INTL YEAGER (CRW)

WAAS CH 87115 W05A	APP CRS 053°	Rwy Ldg TDZE Apt Elev	6215 947 947
--	------------------------	-----------------------------	---

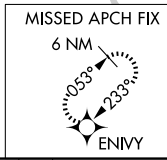
RNP APCH.
 For uncompensated Baro-VNAV systems, procedure NA below -17°C or above 54°C.

MISSED APPROACH: Climb to 3000 direct ENIVY and hold.

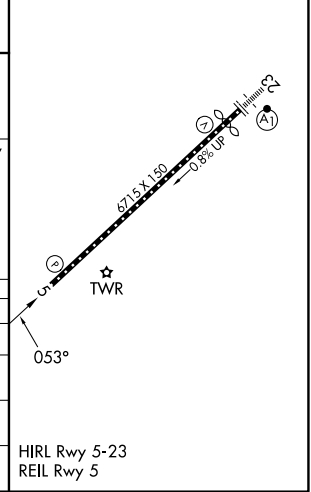
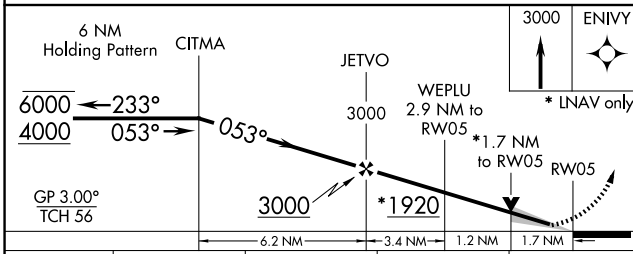
ATIS 127.6	CHARLESTON APP CON 124.1 269.125	CHARLESTON TOWER 125.7 257.8	GND CON 121.8 348.6
----------------------	--	--	-------------------------------



Procedure NA for arrival on HVQ VOR/DME airway radials 119 CW 261.



ELEV 947	D TDZE 947
----------	-------------------



CATEGORY	A	B	C	D
LPV DA		1147/40	200 (200-¾)	
LNAV/VNAV DA		1584-1¾	637 (700-1¾)	
LNAV MDA	1560/55	613 (700-1)	1560-1¾	613 (700-1¾)
CIRCLING	1600-1	653 (700-1)	1760-2½ 813 (900-2½)	1880-3 933 (1000-3)

HIRL Rwy 5-23
REIL Rwy 5

NE-4, 11 JUN 2026 to 09 JUL 2026

NE-4, 11 JUN 2026 to 09 JUL 2026