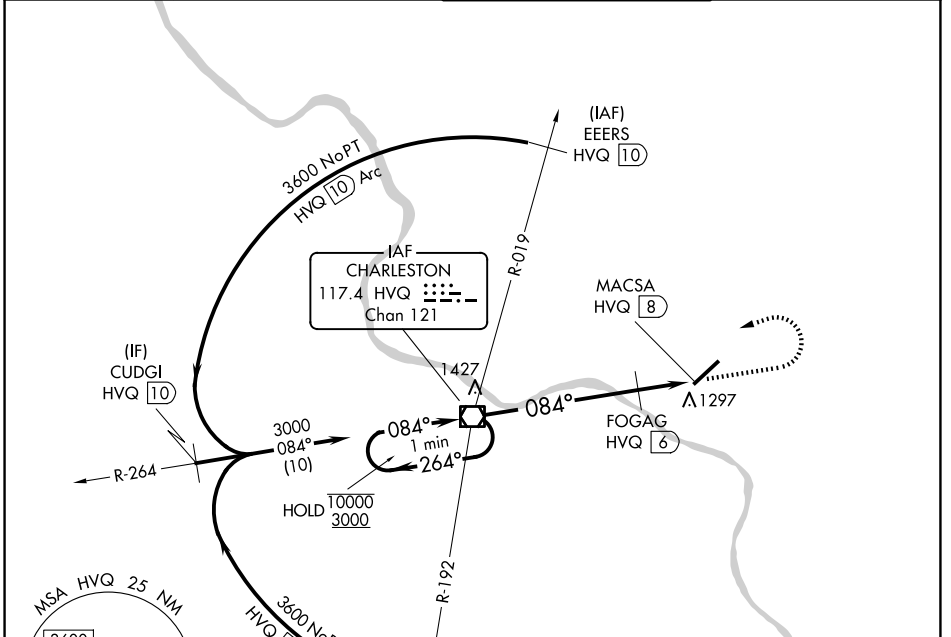


VOR/DME HVQ <b>117.4</b> Chan <b>121</b>	APP CRS <b>084°</b>	Rwy Ldg TDZE Apt Elev <b>947</b>	<b>N/A</b> <b>N/A</b> <b>947</b>
--	------------------------	---	--

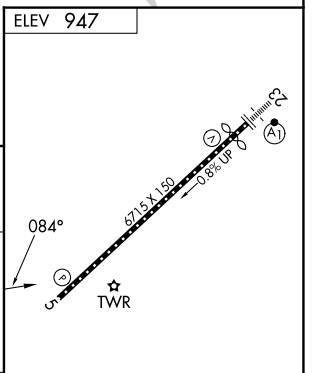
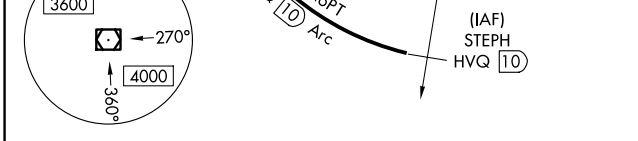
**VOR-A**  
WEST VIRGINIA INTL YEAGER (CRW)

		MISSED APPROACH: Climb to 1800 then climbing left turn to 3500 direct HVQ VOR/DME and hold.	
ATIS <b>127.6</b>	CHARLESTON APP CON <b>124.1 269.125</b>	CHARLESTON TOWER <b>125.7 257.8</b>	GND CON <b>121.8 348.6</b>



NE-4, 11 JUN 2026 to 09 JUL 2026

NE-4, 11 JUN 2026 to 09 JUL 2026



One Minute Holding Pattern	HVQ VOR/DME	1800	3500	HVQ
10000 ← 264°	→ 084°	↑	↶	☐
3000	FOGAG HVQ 6			
	MACSA HVQ 8			
	1720			
	6 NM	2 NM		
CATEGORY	A	B	C	D
CIRCLING	1720-1	773 (800-1)	1760-2½ 813 (900-2½)	1880-3 933 (1000-3)
	FOGAG FIX MINIMUMS (DME REQUIRED)			
CIRCLING	1600-1	653 (700-1)	1760-2½ 813 (900-2½)	1880-3 933 (1000-3)

FAF to MAP 8 NM					
Knots	60	90	120	150	180
Min:Sec	8:00	5:20	4:00	3:12	2:40