

WAAS CH <b>93712</b> <b>W36A</b>	APP CRS <b>002°</b>	Rwy Ldg TDZE Apt Elev	<b>7150</b> <b>346</b> <b>346</b>
--	------------------------	-----------------------------	---

# RNAV (GPS) RWY 36

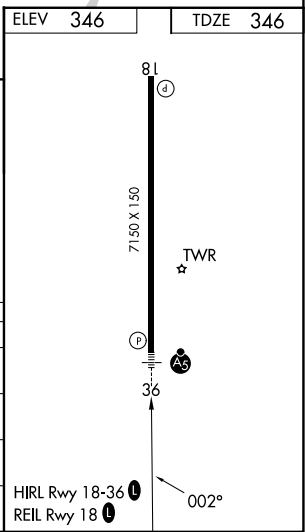
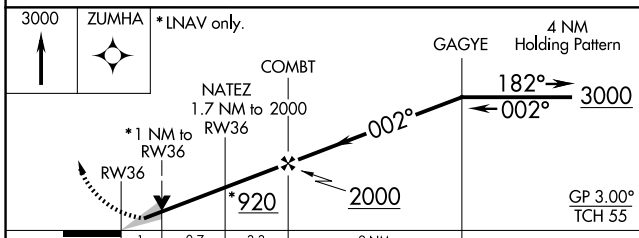
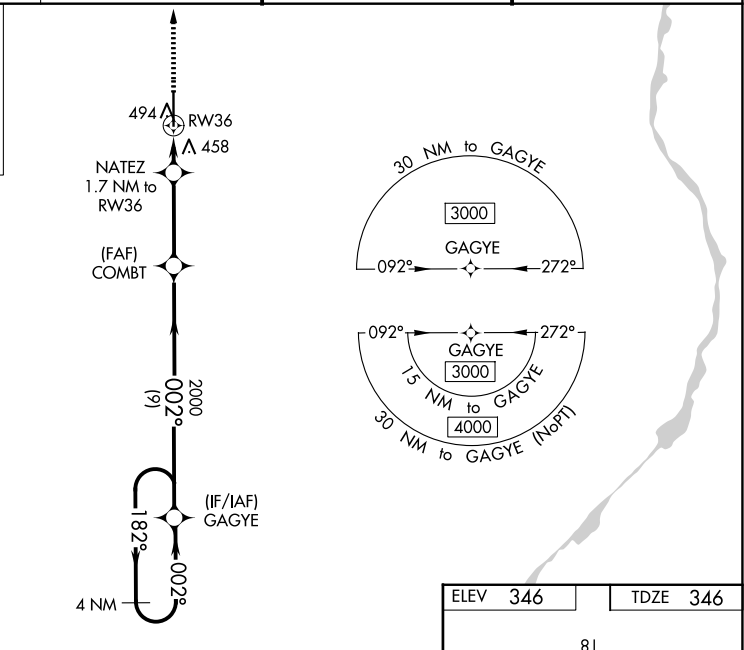
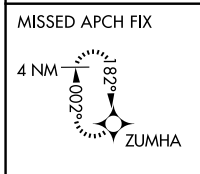
TUPELO RGNL (TUP)

RNP APCH:

⚠ For uncompensated Baro-VNAV systems, LNAV/VNAV NA below -9°C (16°F) or above 54°C (130°F). When local altimeter setting not received, use Columbus AFB altimeter setting and increase all DA 112 feet and all MDA 120 feet; increase LNAV/VNAV all Cats visibility ½ mile and LNAV Cats C and D ¾ mile and Circling Cats C and D ½ mile. For inop ALS when using Columbus AFB altimeter setting, increase LPV all Cats visibility ½ SM. Baro-VNAV and VDP NA when using Columbus AFB altimeter setting.

MALSR  
MISSED APPROACH:  
Climb to 3000 direct ZUMHA and hold.

ASOS <b>133.525</b>	MEMPHIS CENTER <b>128.5 279.55</b>	TUPELO TOWER * <b>118.775 (CTAF) 0 254.275</b>	GND CON <b>121.825 254.275</b>
------------------------	---------------------------------------	---	-----------------------------------



CATEGORY	A	B	C	D
LPV DA		546-½	200 (200-½)	
LNAV/VNAV DA		730-¾	384 (400-¾)	
LNAV MDA	720-½	374 (400-½)	720-⅝	374 (400-⅝)
CIRCLING	820-1	474 (500-1)	900-1½ 554 (600-1½)	1140-2½ 794 (800-2½)

SC-4, 11 JUN 2026 to 09 JUL 2026

SC-4, 11 JUN 2026 to 09 JUL 2026