

WAAS CH 90540 W23A	APP CRS 231°	Rwy Idg TDZE 754 Apt Elev 782	6002
--	------------------------	---	-------------

RNAV (GPS) RWY 23

ANDERSON RGNL (A.ND)

RNP APCH - GPS.

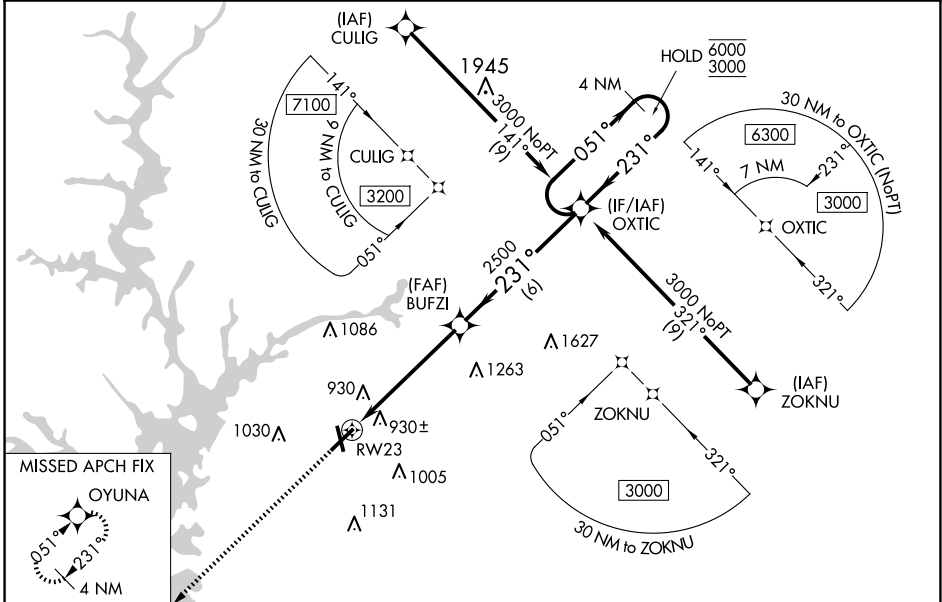
▼ Circling Rwy 17, 35 NA at night. Baro-VNAV and VDP NA when using Clemson altimeter setting. Rwy 23 helicopter visibility reduction below $\frac{3}{4}$ SM NA. For uncompensated Baro-VNAV systems, LNAV/VNAV NA below -7°C or above 54°C . When local altimeter setting not received, use Clemson altimeter setting and increase LPV DA to 1149 feet and all visibilities $\frac{1}{8}$ SM; increase LNAV/VNAV DA to 1267 feet; increase all MDAs 60 feet and visibility LNAV Cats C/D and Circling Cats C/D $\frac{1}{4}$ SM.

MISSED APPROACH: Climb to 2500 direct OYUNA and hold.

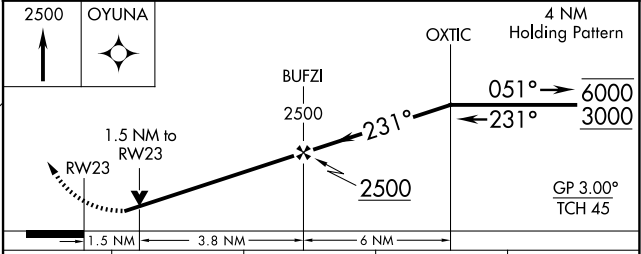
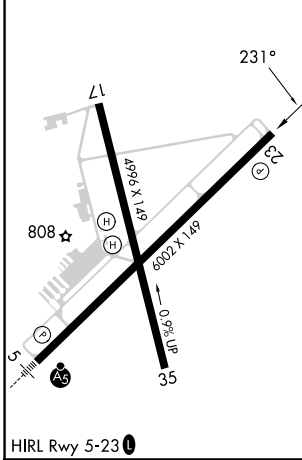
ASOS
120.675

GREER APP CON *
118.8 270.275

CTAF
123.6



ELEV 782	TDZE 754
----------	----------



CATEGORY	A	B	C	D
LPV DA		1102-1	348 (400-1)	
LNAV/VNAV DA		1220- $1\frac{3}{8}$	466 (500- $1\frac{3}{8}$)	
LNAV MDA	1280-1	526 (500-1)	1280- $1\frac{1}{2}$	526 (500- $1\frac{1}{2}$)
C CIRCLING	1280-1 498 (500-1)	1320-1 538 (600-1)	1440- $1\frac{3}{4}$ 658 (700- $1\frac{3}{4}$)	1500- $2\frac{1}{4}$ 718 (800- $2\frac{1}{4}$)

SE-2, 11 JUN 2026 to 09 JUL 2026

SE-2, 11 JUN 2026 to 09 JUL 2026