

VORTAC ELW 108.6 Chan 23	APP CRS 039°	Rwy Idg 6002 TDZE 759 Apt Elev 782
---------------------------------------	------------------------	---------------------------------------------------------------

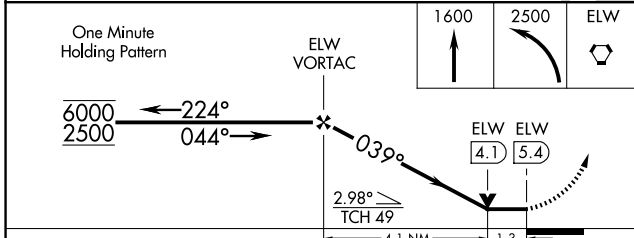
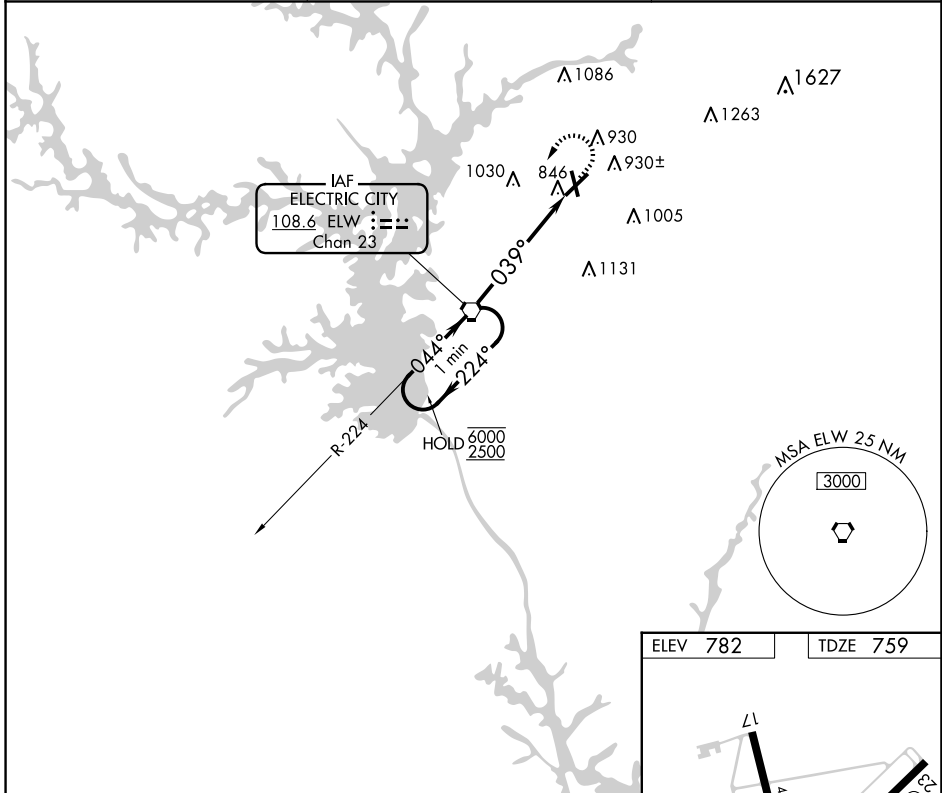
VOR RWY 5

ANDERSON RGNL (A.ND)

▼ Rwy 17, 35 helicopter visibility reduction below 1 SM NA. When local altimeter setting not received, use CEU altimeter setting and increase all MDAs 60 feet and S-5 visibility Cat C/D 1/8 SM, and Circling visibility Cat C/D 1/4 SM. VDP NA when using CEU altimeter setting. Circling Rwy 17, 35 NA at night.

MALSR MISSED APPROACH: Climb to 1600 then climbing left turn to 2500 direct ELW VORTAC and hold.

ASOS 120.675	GREER APP CON ★ 118.8 270.275	CTAF 123.6 0
------------------------	-----------------------------------------	------------------------



ELEV 782	TDZE 759
----------	----------

CATEGORY	A	B	C	D
S-5	1200-1/2	441 (500-1/2)	1200-7/8	441 (500-7/8)
C CIRCLING	1260-1 478 (500-1)	1320-1 538 (600-1)	1440-1 3/4 658 (700-1 3/4)	1500-2 1/4 718 (800-2 1/4)

HIRL Rwy 5-23 0	FAF to MAP 5.4 NM
Knots	60 90 120 150 180
Min:Seq	5:24 3:36 2:42 2:10 1:48

SE-2, 11 JUN 2026 to 09 JUL 2026

SE-2, 11 JUN 2026 to 09 JUL 2026