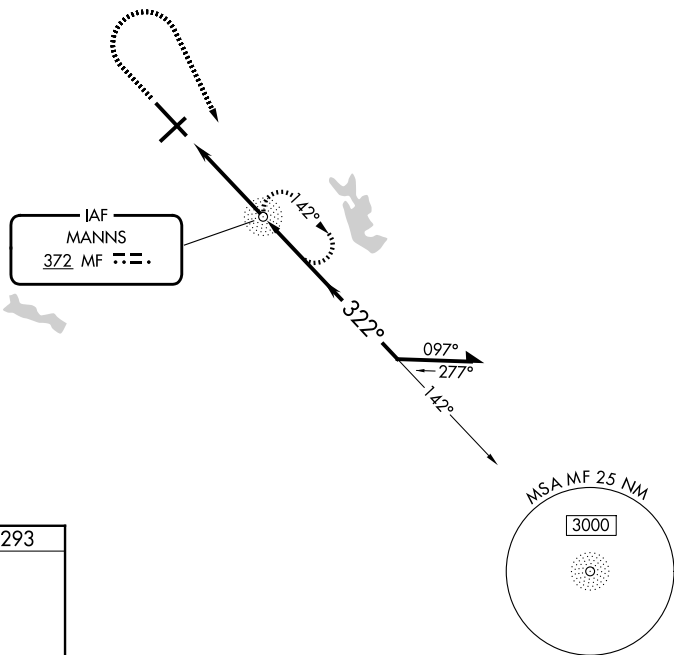


NDB MF 372	APP CRS 322°	Rwy Ldg TDZE Apt Elev	9001 1293 1297
----------------------	------------------------	-----------------------------	---

NDB RWY 32
MANSFIELD LAHM RGNL (MF'D)

RADAR required for procedure entry.		MALSR 	MISSED APPROACH: Climb to 2300 then climbing right turn to 3000 direct MF NDB and hold.
For inop ALS increase Cats A and B visibility to RVR 5500.			

ATIS 125.3	CLEVELAND APP CON ★ 128.35 360.65	MANSFIELD TOWER ★ 119.8 (CTAF) 291.775	GND CON 121.8 291.775	UNICOM 122.95
----------------------	---	--	---------------------------------	-------------------------

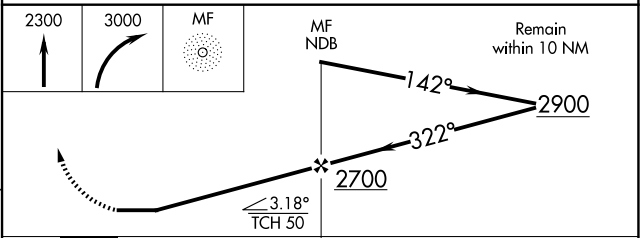


ELEV 1297 **D** TDZE 1293

HIRL Rwy 5-23 and 14-32
REIL Rwy 5 and 23

FAF to MAP 4 NM

Knots	60	90	120	150	180
Min:Sec	4:00	2:40	2:00	1:36	1:20



CATEGORY	A	B	C	D
S-32	1820/40	527 (600-¾)	1820/55	527 (600-1)
CIRCLING	1820-1	523 (600-1)	2000-2 703 (800-2)	2000-2¼ 703 (800-2¼)

EC-2, 11 JUN 2026 to 09 JUL 2026

EC-2, 11 JUN 2026 to 09 JUL 2026