

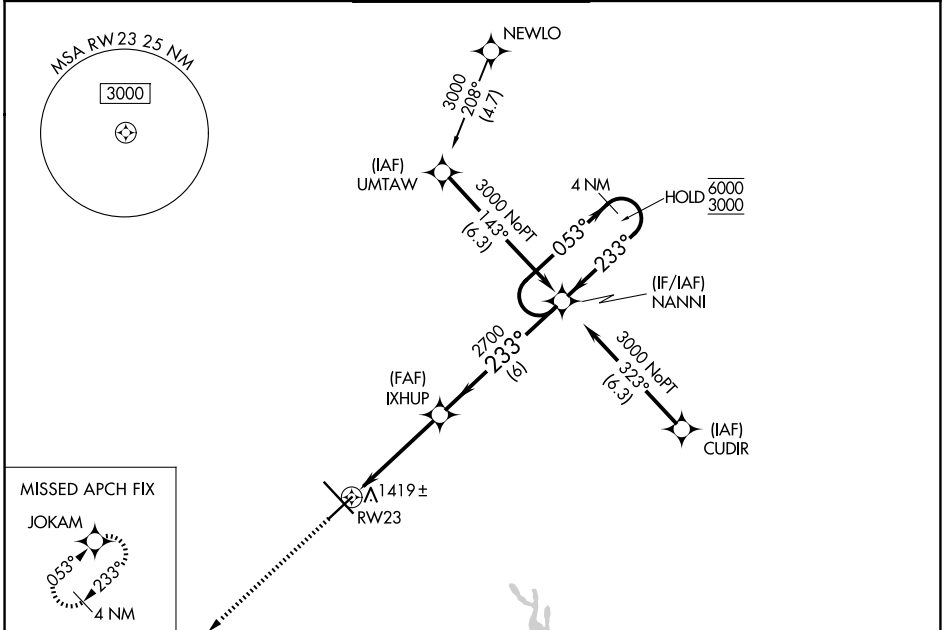
WAAS CH 87119 W23A	APP CRS 233°	Rwy Ldg TDZE Apt Elev	6819 1295 1297
--	------------------------	-----------------------------	---

RNAV (GPS) RWY 23

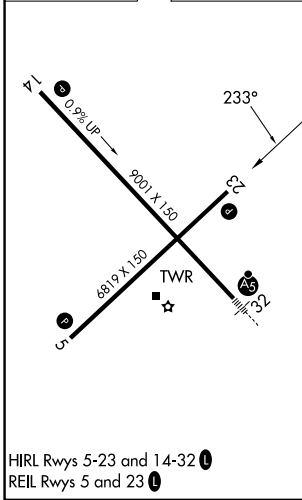
MANSFIELD LAHM RGNL (MFD)

RNP APCH - GPS.		MISSED APPROACH: Climb to 3000 direct JOKAM and hold.	
⚠	Rwy 23 helicopter visibility reduction below 3/4 SM NA. For uncompensated Baro-VNAV systems, LNAV/VNAV NA below -20°C (-4°F) or above 54°C (130°F).		

ATIS 125.3	CLEVELAND APP CON * 128.35 360.65	MANSFIELD TOWER * 119.8 (CTAF) 291.775	GND CON 121.8 291.775	UNICOM 122.95
----------------------	---	--	---------------------------------	-------------------------



ELEV 1297	D	TDZE 1295
-----------	----------	-----------



3000	JOKAM	4 NM Holding Pattern		
↑	✧	IXHUP 2700	← 233°	→ 053° 6000
RW23		1.1 NM to RW23	3.2 NM	6 NM
CATEGORY	A	B	C	D
LPV DA	1545-3/4		250 (300-3/4)	
LNAV/VNAV DA	1619-1		324 (400-1)	
LNAV MDA	1680-1	385 (400-1)	1680-1 1/8	385 (400-1 1/8)
CIRCLING	1760-1 463 (500-1)	1820-1 523 (600-1)	2000-2 703 (800-2)	2000-2 1/4 703 (800-2 1/4)