

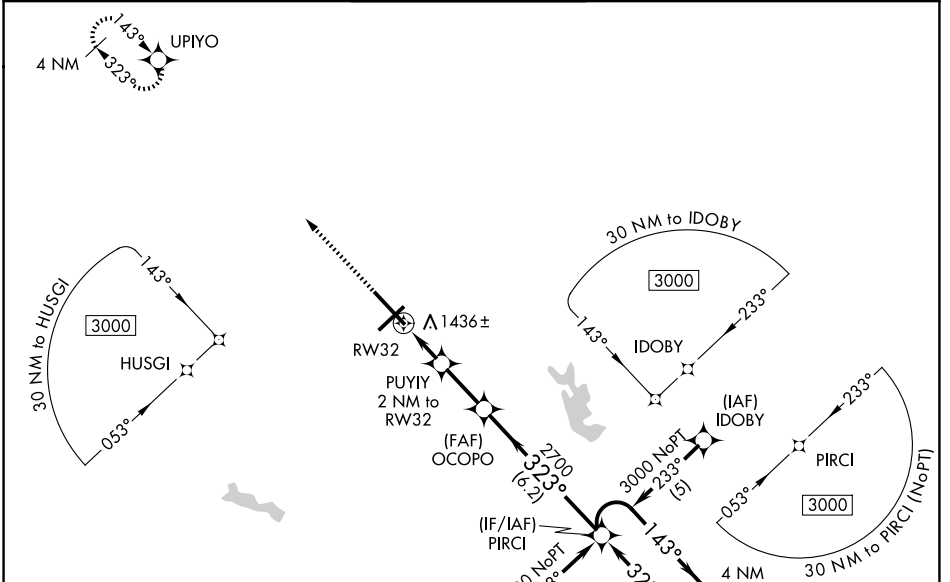
WAAS CH 99611 W32A	APP CRS 323°	Rwy Ldg TDZE Apt Elev	9001 1293 1297
--	------------------------	-----------------------------	---

RNAV (GPS) RWY 32

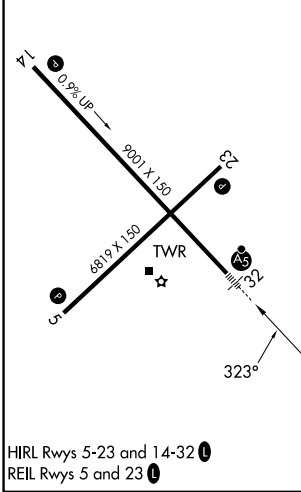
MANSFIELD LAHM RGNL (MFD)

RNP APCH - GPS.		MALSRL	MISSED APPROACH: Climb to 3000 direct UPIYO and hold.
<p>▼ For uncompensated Baro-VNAV systems, LNAV/VNAV NA below -17°C or above 54°C. ▲ *RVR 1800 authorized with use of FD or AP or HUD to DA.</p>			

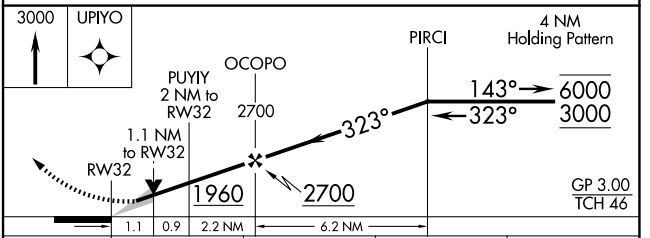
ATIS 125.3	CLEVELAND APP CON * 128.35 360.65	MANSFIELD TOWER * 119.8 (CTAF) 0291.775	GND CON 121.8 291.775	UNICOM 122.95
----------------------	---	---	---------------------------------	-------------------------



ELEV 1297	D	TDZE 1293
-----------	----------	-----------



HIRL Rwy 5-23 and 14-32
REIL Rwy 5 and 23



CATEGORY	A	B	C	D
LPV DA*		1493/24	200 (200-½)	
LNAV/VNAV DA		1700/35	407 (500-⅝)	
LNAV MDA	1700/24	407 (500-½)	1700/35	407 (500-⅝)
CIRCLING	1760-1 463 (500-1)	1820-1 523 (600-1)	2000-2 703 (800-2)	2000-2¼ 703 (800-2¼)

EC-2, 11 JUN 2026 to 09 JUL 2026

EC-2, 11 JUN 2026 to 09 JUL 2026