

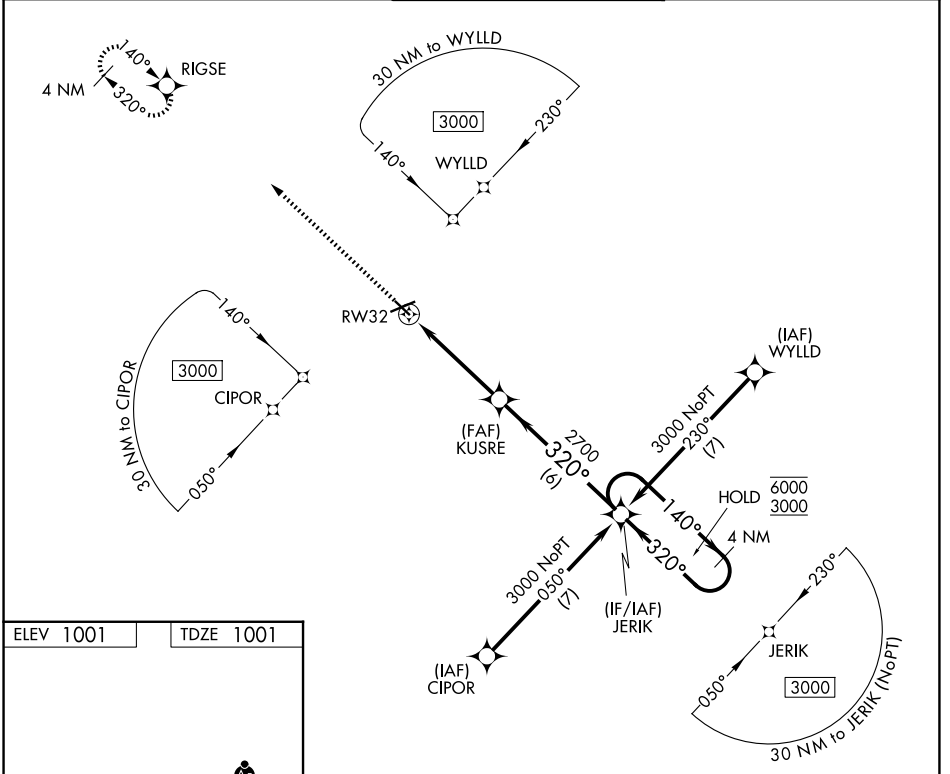
APP CRS	Rwy Ldg	4000
320°	TDZE	1001
	Apt Elev	1001

RNAV (GPS) RWY 32

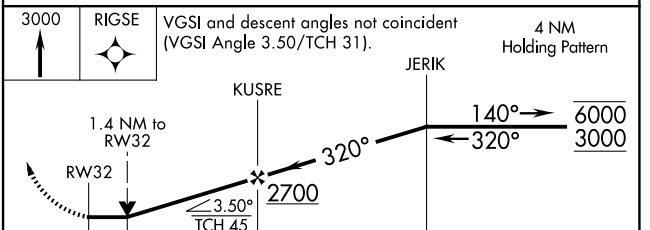
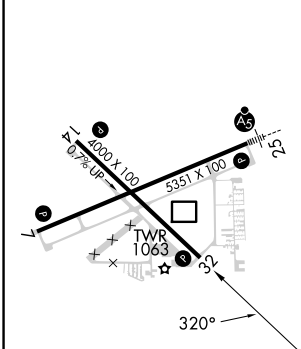
JACKSON COUNTY/REYNOLDS FLD (JXN)

RNP APCH - GPS.		MISSED APPROACH: Climb to 3000 direct RIGSE and hold.	
Rwy 32 helicopter visibility reduction below 3/4 SM NA.			

ATIS 125.725	GREAT LAKES APP CON★ 127.3 335.575	JACKSON TOWER★ 128.475 (CTAF) 0 257.8	GND CON 121.9	UNICOM 122.95
------------------------	--	---	-------------------------	-------------------------



ELEV 1001	TDZE 1001
-----------	-----------



CATEGORY	A	B	C	D
LNAV MDA	1560-1	559 (600-1)	1560-1 1/8	559 (600-1 1/8)
CIRCLING	1560-1	559 (600-1)	1660-1 3/4 659 (700-1 3/4)	1660-2 659 (700-2)

HIRL Rwy 7-25 (1)
MIRL Rwy 14-32 (1)
REIL Rwy 7 and 32 (1)

EC-1, 11 JUN 2026 to 09 JUL 2026

EC-1, 11 JUN 2026 to 09 JUL 2026