

WAAS CH 62841 W07A	APP CRS 074°	Rwy Ldg TDZE Apt Elev	5351 993 1001
--	------------------------	-----------------------------	--

RNAV (GPS) RWY 7

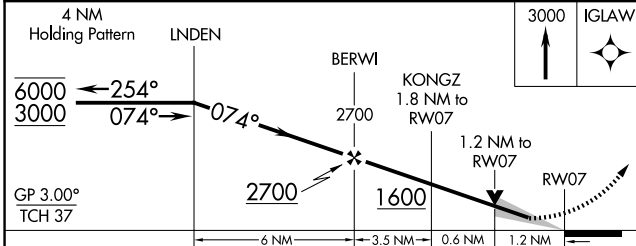
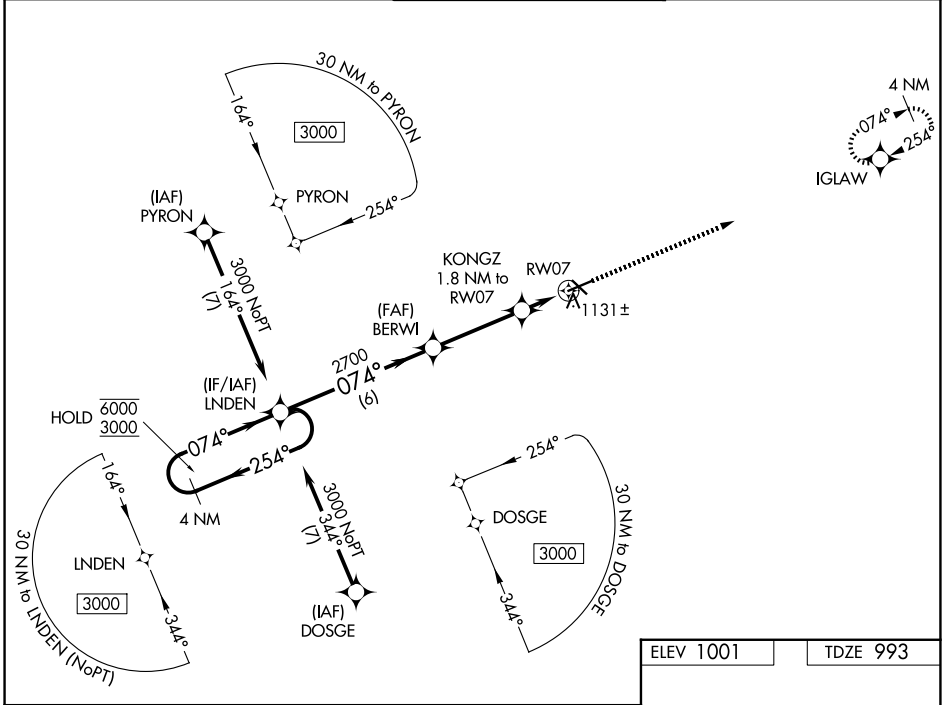
JACKSON COUNTY/REYNOLDS FLD (JXN)

RNP APCH - GPS.

▼ For uncompensated Baro-VNAV systems, LNAV/VNAV NA below -23°C or above 54°C.

MISSED APPROACH: Climb to 3000 direct IGLAW and hold.

ATIS 125.725	GREAT LAKES APP CON* 127.3 335.575	JACKSON TOWER* 128.475 (CTAF) 0 257.8	GND CON 121.9	UNICOM 122.95
------------------------	--	---	-------------------------	-------------------------



ELEV 1001	TDZE 993
-----------	----------

Detailed airport diagram showing RWY 7 (5351 x 100), RWY 32 (4000 x 100), taxiways, and the tower location (TWR 1063). The diagram also shows the 074° approach path and the 152° departure path.

HIRL Rwy 7-25 0
MIRL Rwy 14-32 0
REIL Rwy 7 and 32 0

EC-1, 11 JUN 2026 to 09 JUL 2026

EC-1, 11 JUN 2026 to 09 JUL 2026