

|   |                        |   |
|---|------------------------|---|
| LOC/DME I-LFT<br><b>109.5</b><br>Chan <b>32</b> | APP CRS<br><b>216°</b> | Rwy Ldg<br>TDZE <b>37</b><br>Apt Elev <b>41</b> |
|---|------------------------|---|

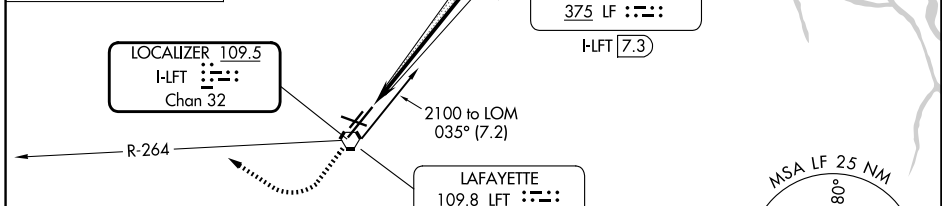
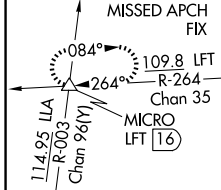
# ILS or LOC RWY 22L

LAFAYETTE RGNL/PAUL FOURNET FLD (L.F'T)

**⚠** Circling Rwy 11, 4R, 4L, and 22R NA at night. Rwy 22L helicopter visibility reduction below RVR 4000 NA. Inop table does not apply to S-ILS 22L all Cats. When local altimeter setting not received, use ARA altimeter setting and increase S-ILS 22L DA to 316 feet, increase all MDAs 40 feet and S-LOC 22L visibility Cat C/D to RVR 5000 and Circling visibility Cat C/D ¼ SM. VDP NA when using ARA altimeter setting. For inop ALS, increase S-LOC 22L Cat A and B visibility to RVR 5500.

**MALS**R  
  
**MISSED APPROACH:**  
 Climb to 800 then climbing right turn to 2100 on LFT VORTAC R-264 to MICRO INT/ LFT 16 DME and hold.

|                       |  |   |                         |                         |
|-----------------------|--|---|-------------------------|-------------------------|
| ATIS<br><b>134.05</b> | LAFAYETTE APP CON★<br><b>121.1 363.0</b> | LAFAYETTE TOWER★<br><b>118.5 (CTAF) 0 257.8</b> | GND CON<br><b>121.8</b> | UNICOM<br><b>122.95</b> |
|-----------------------|--|---|-------------------------|-------------------------|



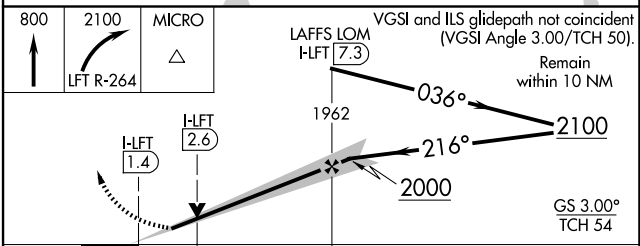
|         |   |         |
|---------|---|---------|
| ELEV 41 | D | TDZE 37 |
|---------|---|---------|

219°  
 221°  
 22R  
 098.4 X 7.5  
 051 X 0008  
 5403 X 1.50  
 TWR  
 4L  
 4R

REIL Rwys 4L, 4R, 11, 22R and 29  
 MIRL Rwys 11-29 and 4L-22R  
 HIRL Rwy 4R-22L

FAF to MAP 5.9 NM

|         |      |      |      |      |      |
|---------|------|------|------|------|------|
| Knots   | 60   | 90   | 120  | 150  | 180  |
| Min:Sec | 5:54 | 3:56 | 2:57 | 2:22 | 1:58 |



| CATEGORY  | A                    | B                    | C                      | D                    |
|-----------|----------------------|----------------------|------------------------|----------------------|
| S-ILS 22L |                      | 292/40               | 255 (300-¾)            |                      |
| S-LOC 22L | 480/40               | 443 (500-¾)          | 480/45                 | 443 (500-¾)          |
| CIRCLING  | 540-1<br>499 (500-1) | 580-1<br>539 (600-1) | 700-1¾<br>659 (700-1¾) | 700-2<br>659 (700-2) |

SC-4, 11 JUN 2026 to 09 JUL 2026

SC-4, 11 JUN 2026 to 09 JUL 2026