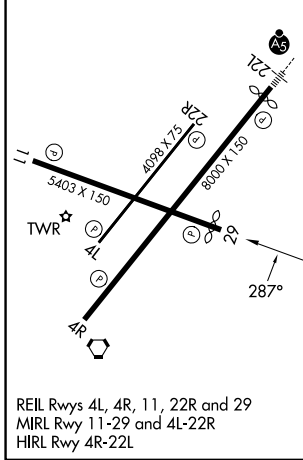


WAAS CH 45703 W29A	APP CRS 287°	Rwy Ldg 5155 TDZE 41 Apt Elev 41
--	------------------------	---

RNAV (GPS) RWY 29

LAFAYETTE RGNL/PAUL FOURNET FLD (L.F.T)

RNP APCH - GPS.		MISSED APPROACH: Climb to 2800 direct SUVDE and on track 273° to RAYNE and hold.	
<p>⚠ Rwy 29 helicopter visibility reduction below 3/4 SM NA. For uncompensated Baro-VNAV systems, LNAV/VNAV NA below -4°C or above 54°C. Circling Rwy 11, 4R, 4L, and 22R NA at night. Baro-VNAV and VDP NA when using ARA altimeter setting. When local altimeter setting not received, use ARA altimeter setting and increase LPV DA to 320 feet and all visibilities 1/2 SM. Increase LNAV/VNAV DA to 320 feet and visibilities 1/2 SM. Increase all MDAs 40 feet and LNAV visibility Cat C/D 1/2 SM, and Circling visibility Cat C/D 1/2 SM.</p>			
ATIS 134.05	LAFAYETTE APP CON★ 121.1 363.0	LAFAYETTE TOWER★ 118.5 (CTAF) 257.8	GND CON 121.8
			UNICOM 122.95



ELEV 41	D	TDZE 41	
2800	SUVDE	RAYNE	5 NM Holding Pattern
↑	✦	tr 273°	△
TODNE 2.5 NM to RWY 29		ATCHA 1700	6000
1 NM to RWY 29		880	2100
1700		287°	107°
6 NM		287°	GP 3.00° TCH 51
CATEGORY	A	B	C
LPV DA	291-3/4	250 (300-3/4)	
LNAV/VNAV DA	291-3/4	250 (300-3/4)	
LNAV MDA	400-1	359 (400-1)	
CIRCLING	500-1 459 (500-1)	580-1 539 (600-1)	700-2 659 (700-2)

SC-4, 11 JUN 2026 to 09 JUL 2026

SC-4, 11 JUN 2026 to 09 JUL 2026