

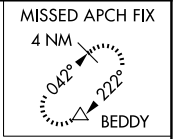
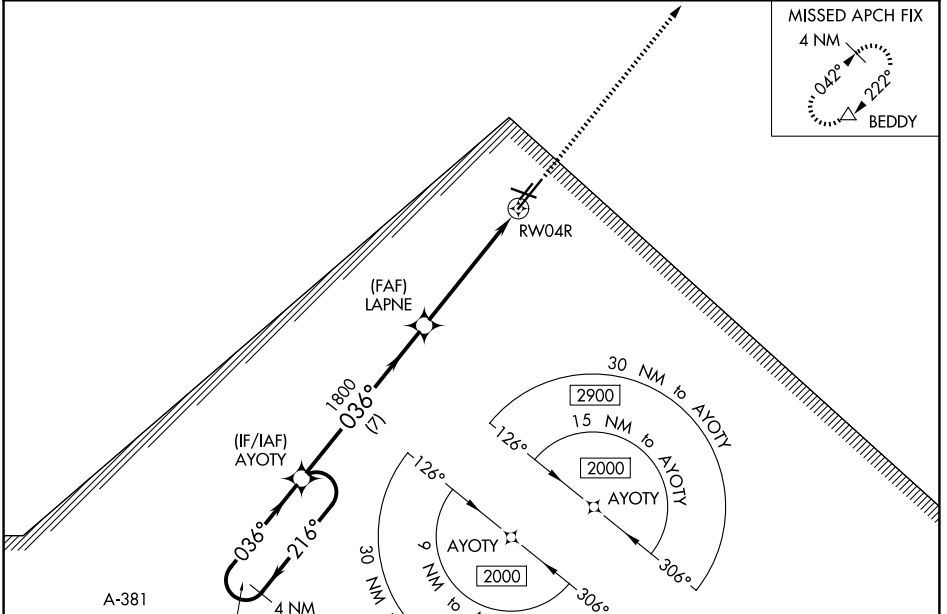
WAAS CH <b>45903</b> <b>W04A</b>	APP CRS <b>036°</b>	Rwy Ldg <b>8000</b> TDZE <b>40</b> Apt Elev <b>42</b>
----------------------------------------	------------------------	-------------------------------------------------------------

# RNAV (GPS) RWY 4R

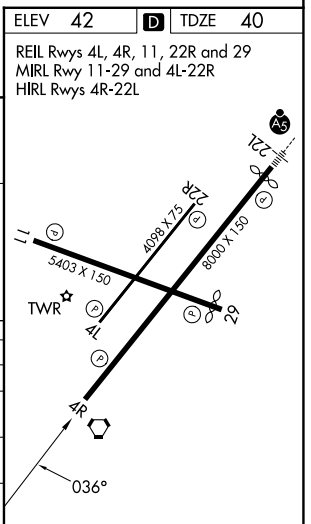
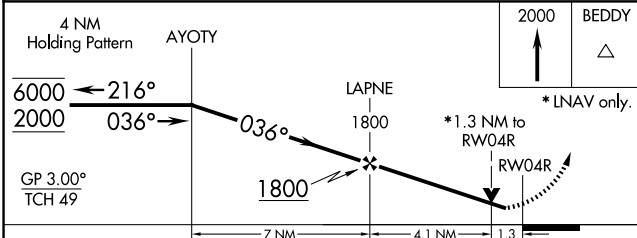
LAFAYETTE RGNL/PAUL FOURNET FLD (L.F.T)

RNP APCH.		MISSED APPROACH: Climb to 2000 direct BEDDY and hold.	
<p>▼ ▲ Rwy 4R helicopter visibility reduction below 3/4 SM NA. For uncompensated Baro-VNAV systems, LNAV/VNAV NA below -2°C or above 54°C.</p>			

ATIS <b>134.05</b>	LAFAYETTE APP CON ★ <b>121.1 363.0</b>	LAFAYETTE TOWER ★ <b>118.5 (CTAF) 257.8</b>	GND CON <b>121.8</b>	UNICOM <b>122.95</b>
-----------------------	-------------------------------------------	------------------------------------------------	-------------------------	-------------------------



ELEV <b>42</b>	<b>D</b> TDZE <b>40</b>
REIL Rwys 4L, 4R, 11, 22R and 29 MIRL Rwy 11-29 and 4L-22R HIRL Rwys 4R-22L	



CATEGORY	A	B	C	D
LPV DA		317-7/8	277 (300-7/8)	
LNAV/VNAV DA		440-1 1/8	400 (400-1 1/8)	
LNAV MDA	500-1	460 (500-1)	500-1 3/8	460 (500-1 3/8)
CIRCLING	500-1 458 (500-1)	580-1 538 (600-1)	700-1 3/4 658 (700-1 3/4)	700-2 658 (700-2)

SC-4, 11 JUN 2026 to 09 JUL 2026

SC-4, 11 JUN 2026 to 09 JUL 2026